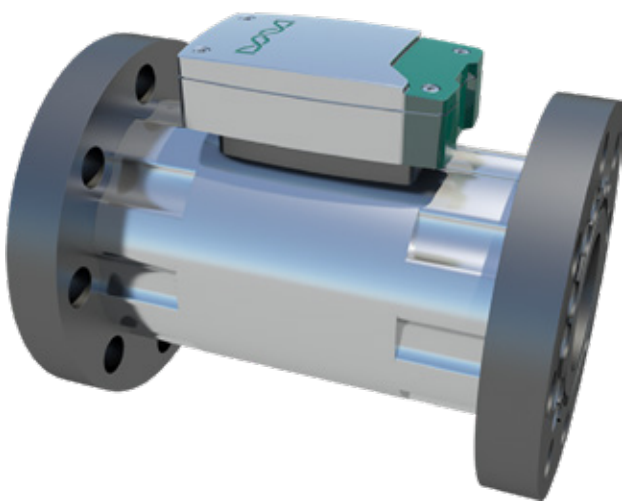


AQUAFIELD

- Multiphase applications
 - Production optimization for individual wells
 - Fracking optimization
 - Flow assurance downstream separators
- Water fraction and Conductivity
- One meter per well



FEATURES

Water fraction detection in multiphase

- Full range 0—100% water in multiphase
- Enables water fraction detection pr. individual well
- Simple, robust and low cost

Water conductivity monitoring

- Real time water conductivity detection
- Water breakthrough detection pr. well

WATER FRACTION METER FOR MULTIPHASE APPLICATIONS

- Onshore and offshore applications
- In line, non intrusive and full bore
- Real time measurement
- No PVT input required
- No radioactive components
- Detector not exposed to media
- Low power consumption
- Adaptable to any power/ communication system
- Plug & Play



SPECIFICATIONS

Operating range

- 0—100 % water volume fraction in multiphase flow (hold-up)
- 0—95% GVF
- Water continuous flow
- Oil continuous flow

Installation

- In line with flow
- Vertical upwards flow

Typical design operating temperature and pressure

- 150 Bar
- -20 to 120 DegC
- Other P/T specifications on request

Power requirement

- 24 VDC, GND, <10 W (adaptable)

Communcation

- RS485—MODBUS RTU
- Adaptable to operator standards

PERFORMANCE

Water fraction +/- 5% abs.
Conductivity +/- 0.5 S/m abs.

CONTACT DETAILS

COMPANY

Hammertech AS

POSTAL ADDRESS

Nesttunbrekka 97
5221 Nesttun
Norway

VISITING ADDRESS

Nesttunbrekka 97
5221 Nesttun
Norway

SWITCHBOARD:

+47 5570 5004

E-MAIL:

sales@hammertech.no

WEB:

www.hammertech.no