

THE MESSENGER



To live so that others will become disciples of Jesus Christ for the transformation of the world.



At the end of this month, United Methodist from around the world will gather in St. Louis for a called special general conference to discuss unity and inclusion in the United Methodist Church.

As this conference approaches, I have found myself thinking about why I am a United Methodist and why I remain a United Methodist. This kind of foundational thinking can be helpful to keep us grounded in times of anxiety and change.

In many ways, I was a Methodist long before I began to regularly attend a United Methodist Church when I was 9. My dad had been raised in a Methodist Church – the great grandson of Methodist pastor. The Methodist roots of my dad's family run deep. My parents met in a Methodist church in Dallas Texas, even though my mom had been raised in another denomination.

When we moved to Ohio, the fact that we lived within a quarter mile of the local United Methodist Church was not entirely a coincidence.

When I took my United Methodist history and doctrine courses, I was surprised by how instinctual some of the things about the Methodist church were for me. We talked about the way that salvation is a journey, the focus on the fruits of ministry, creating a nurturing and accountable community for both sinners and saints, social

justice, creative ministries, and a pragmatic theology.

For me, this boils down into the idea that our faith isn't something that just lives in our heads but is something lived through our hands and hearts in the world.

There are also structural things about the UMC that I love. We are the largest denomination in the world that ordains women. We have the only non-Government building on Capitol Hill, which allows us to be a voice for justice in Washington DC.

We have a connectional system that not only allows and encourages churches to work together, both around the world and around the corner. This reminds us that faith is something we do together, as a world-wide community of believers.

It is the connection that enables the United Methodist Commission on Relief (UMCOR) to be a force for relief, both during and long after disaster strikes. This is one thing at is at stake as we consider our denominational future: Our ability to improve individual lives and make the world better.

For those interested, there will be a special Open Table worship service on Saturday, Feb. 23 at 7pm at Christ United Methodist Church (3625 W 138th St, Cleveland) to offer worship and prayer for those following the conference and needing "spiritual refreshment."

(continued pg. 2)



A SITE OF WESTLAKE UNITED METHODIST CHURCH

Suburban Campus

27650 Center Ridge Road • Westlake, Ohio 44145
(440) 871-3088 • westlakeumc.org
Sunday Worship at 8:15, 10:00 and 11:28 a.m.



A SITE OF WESTLAKE UNITED METHODIST CHURCH

Simpson Metro West Campus

8519 Clark Ave • Cleveland, Ohio 44102
(440) 871-3088 • westlakeumc.org/simpson
Sunday Worship at 10:45 a.m.

News and Committee Reports

SEEDS FOR SCHOLARSHIPS SPECIAL COLLECTION

Sunday, February 3

A Seeds for Scholarship collection will be taken on **Sunday, February 3rd** to help fund WUMC Scholarships. Every year WUMC awards college scholarships to youth who have served and participated in our church. The WUMC Scholarship program was established over 30 years ago and has been built upon by the WUMC church family and friends. The number of active youth in our church is growing, and we want to continue to be able to nurture our youth as they go forth into the world. Prayerfully consider giving a donation to continue to support our youth who are our future. We thank you in advance for your generosity!

FUTURE EVENTS:

WESTSIDE COMMUNITY HOUSE MEAL

March volunteers needed

We are continuing to provide a community meal for the parenting program at Westside Community House on every the third Tuesday of the month. We are currently looking for groups who can provide a complete meal for 50-60 people for March and May. Menu suggestions and amounts are available. Please talk to your group or church team and prayerfully consider supporting this very worthwhile program.

THE MISSION TEAM

is confirming dates for our second annual spring mission day event at Nehemiah Mission for adults and children age 12 and up. Look for more information and date on the main bulletin board.

We are also setting up our third annual summer half/full week adult Mission trip to Blue Rose Mission in Mansfield, Ohio. Dates will be announced as soon as possible.

We are looking for trained leaders for both trips. **If you are interested in one or both of these events, or can help lead, please contact the Mission Team chair, Kay Martin at kcbrightm@aol.com**

(continued from pg. 1)

If you want to know more about the special general conference, the decision being made, what's at stake and why it matters, I encourage to attend Rev. Mollie's Sunday Night bible study beginning Feb. 10 at 5 pm.

I encourage you to be in prayer, not just for our delegation, but for all those who will gather at the end of February for the special General Conference.

May God bless our way forward.

-Rev. Paige

SUBURBAN CAMPUS

Memorial Garden Bricks

Our beautiful Memorial Garden is ready for you to add the memory of a loved one, a special celebration or to honor someone you love.

Memorial Bricks for the Memorial Garden, located at the front of the Suburban Campus building, can be ordered anytime throughout the year. Orders will be submitted to the engraver in March for delivery in the spring and in August for delivery in the fall.

Currently, we are ordering for spring 2019.

If you would like your Memorial Brick to be ready for spring of 2019, you must have the Memorial Brick form filled out with a check attached payable to Westlake United Methodist Church (Memorial Brick on the memo line) by **SUNDAY, March 3, 2019** (in the church office). Forms are located in the church lobby.

Prices are: 4x8 Brick \$50.00 • 8x8 Brick \$100.00

Save the Date!

CHOIR CHILI COOK-OFF

SATURDAY, FEBRUARY 23RD

1:00pm-3:30pm

Funds to be used to support guest musicians for Christmas and Easter cantatas and other music ministry opportunities in 2019.

Stay tuned for more details!

Small Groups & Spiritual Growth

WOMEN'S CHRIST CARE Small Group!

As the dark evenings of winter settle us into comfy corners at home with candles lit, please consider starting your weekend on Saturday mornings at WUMC Suburban Campus at 10:00 along with other women as we explore our faith.

We'll be meeting in Room 207 each Sat. from now through Feb. 16 using a DVD study by Melissa Spoelstra, "Jeremiah, Daring to Hope in an Unstable World." As we delve into the Book of Jeremiah together, we'll find God calling us to place our hope in Him, offering us a message that hope-filled living is possible even in an unstable world.

Please contact Gretty Myers with any questions at gretty.myers@gmail.com



United
Methodist
Women
FAITH • HOPE • LOVE IN ACTION

Westlake United Methodist Women **GENERAL MEETING – FELLOWSHIP HALL SC**

THURSDAY, FEBRUARY 14TH | 10:30 AM

All women of the church are invited to join this friendly, mission-focused group. The meeting begins at 10:30 a.m. with lunch at 12:00 noon. Bring your sandwich and our hostesses will provide dessert and beverage.

The program at 1:00 p.m. will be "Twice-Blessed Free Store" presented by Craig Cowles of Nehemiah Mission.

Church Family Focus

ALTAR FLOWERS

AT THE SUBURBAN
CAMPUS

Many thanks to those who help to beautify our Altar with the purchase of flowers. Altar flowers honor, celebrate or remember a special person or event.



If you would like to donate flowers for the altar on Sundays, please complete the Altar flower form found in the lobby. You may place the form & payment in the collection plate or turn into the office. Please note that available dates will be posted in the lobby. The office will arrange to have them ordered and delivered. (\$35 per Sunday).

Please contact the office with any questions.

Coffee Time Fellowship

AT THE SUBURBAN CAMPUS

Many thanks to all who support coffee hour financially throughout the programming year. Your donation supports a time to welcome guests and deepen Christian friendships.



OUR COFFEE HOUR FELLOWSHIP IS NOT FREE

Sponsorships are available for our weekly coffee hours following Worship on Sundays. If you would be interested in sponsoring coffee hour, please complete the Coffee hour form found in the lobby. Please note that available dates will be posted in the lobby. You may place the form & payment in the collection plate or turn into the office. (\$35 per Sunday)

Please contact the office with any questions.

Compassion & Congregational Care

HEALTH AND WELLNESS TEAM



As our wellness journey continues at WUMC, the Health and Wellness Team is planning monthly opportunities for our congregation to experience ways to incorporate healthy options into our lives. Watch for monthly wellness programs in future communications with topics like *proper use of medications and their disposal, cultivating self-awareness and mindfulness practices, local resources to connect with as we age, youth drug and alcohol concerns, easy to enter walking groups.* Please contact gretty.myers@gmail.com with your ideas!

NEW FOR LENT!!

The Health and Wellness Team has had many requests from our congregation to help us all find ways to slow down through meditation and other easy to enter practices to encourage and enhance our health and wellness. Please join us on 3 consecutive Saturday mornings starting March 30 and ending on April 13 for "Writing for Your Life", a journaling class led by Mike Reiling, M. Ed. of River's Edge. These 2 hr. sessions will invite you to explore for the first time or for the nth time the benefits of putting thoughts and feelings - our lives- onto paper.

We'll be meeting at WUMC Suburban Campus from 9:30 - 11:30 on Saturdays 3/30, 4/6 and 4/13. A free will offering will be taken each week as a thank you to our generous facilitator. Youth and adults are all welcome!

Please sign up on the bulletin in our church lobby. Gretty Myers is happy to answer any questions - gretty.myers@gmail.com

THANK YOU!

West Side Community House would like to extend our sincere thanks to the Westlake United Methodist Church for making Christmas joyous and bright for so many. Because of you, many families we serve received cookies, toys, gloves and hats. Your thoughtfulness and generosity mean so much. Thank you for thinking of others.

Thank you for your commitment to the West side Community House mission of transforming lives in the community.

Sincerely,

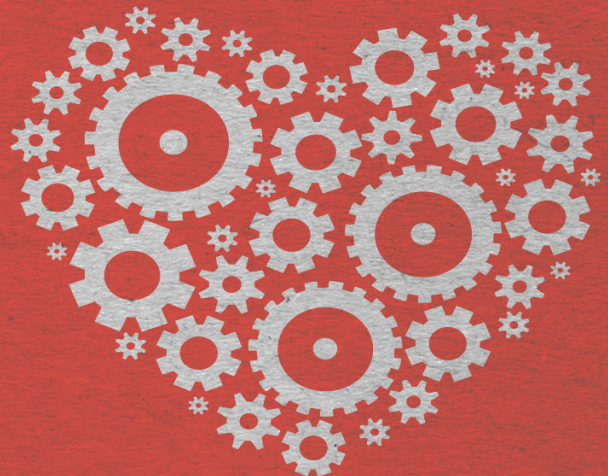
Rachelle Milner
Executive Director

A HEARTFELT THANKS *from Cambodia*

We took two suitcases full of electronics, school supplies, clothing, and medications! They really make a difference. We used some while there and spent time with many who will receive these needed items. Thank you for your generosity, we also had financial donations that will go to scholarships and the new dormitory. We can't wait to share our stories with the congregation! Ask any of our team members-Rev Mollie, Shannon Eichorn, Tammy Howell, Dave and Susie Ordner, Bill and Kay Martin.

*Love never gives up,
never loses faith,
is always hopeful, and
endures through
every circumstance.*

1 CORINTHIANS 13:7



Compassion & Congregational Care



INDIVIDUAL PRAYER TIME & COMMUNION

With Prayer Partners

**SUNDAYS 9 – 9:30 AM OR
11 – 11:30 AM
AT THE SUBURBAN CAMPUS**

Stephen Ministers are available every Sunday morning in Room 207 (new location) from 9 – 9:30 a.m. and also 11 – 11:30 a.m. to offer a quiet, reflective time for individual prayer and communion. We also have sets of prayer beads available for you during this time.

ALL ARE WELCOME!

THE DANIEL PLAN
GOD'S PRESCRIPTION FOR YOUR HEALTH

**JOIN US for the
The Daniel Plan 5 Essentials!**

It's not too late to start this journey or continue walking the path to a healthy, transformed life.

There are several options to join a small group focusing on more of the Daniel Plan health benefits. These sessions begin again in January.

Please contact Gretty Myers gretty.myers@gmail.com if you would like to participate in one of the classes below.

SMALL GROUP MEETING OPTIONS

Sundays at 9 a.m. – Room 107

Mondays at 7 p.m. – Library

Tuesdays at 4 p.m. – Room 106/107

Wednesdays at 7 p.m. – Room 205



**Find us on:
facebook®**

**BE SURE TO LIKE OUR WUMC FACEBOOK PAGE FOR THE
LATEST NEWS AND EVENTS! [CLICK HERE](#)**

Save the Date

**FOR THE DANIEL PLAN 12 MONTH
POST ASSESSMENT!**

Saturday March 23, with times between 8am – 12noon

It's been a year since our church members first started adapting the healthy habits of the Daniel Plan. The Cleveland Clinic will be back to give participants real time results on major health markers. Get the motivation you need to treat your body with care. Anyone who participated in the very first biometric assessment in Feb 2018 is eligible to participate in this free & confidential assessment.

Please sign up for your assessment time slot by Sunday, March 4 at <https://goo.gl/forms/OoesZ6lgDKAPXJwi1>

Healthy Eating

**ALL - CHURCH POTLUCK &
VEGETABLE CHOPPING SKILLS
DEMONSTRATION**

Sunday Feb. 17 at noon at the Suburban Campus!

The Health and Wellness team is planning an exciting lunchtime experience for us all! Our very own culinary expert, Mike Kertes, will be giving a vegetable chopping demonstration plus sharpening your chef knife!! Plus we will share the fantastic healthy food offered by all of you as we sit down to a meal together in Fellowship Hall !!

Here's what you need to know about this fun event.....please sign up on bulletin board in the church lobby and help yourself to one the healthy recipes provided if you'd like.

On Feb. 17 bring your food item to church (the wellness team members will heat it up as necessary), bring along a copy of the recipe too so we can make them available that day. If you want to learn chopping skills, please bring a chef's knife and cutting board...Mike and Paula Kertes will provide the veggies to chop.

**Any questions....please contact Gretty Myers
gretty.myers@gmail.com**

Mission Opportunities & Updates

MISSION:

Twice Blessed Free Store

6515 BRIDGE AVE. CLEVELAND

We will be serving on February 9th, 9:00 am to 1:00.

No experience required! Help needed to restock, sort, help shoppers, and check-in/out.

Meet at WUMC at 8:30 to carpool.

Have a few more hours to help?

Volunteers are always needed on Mondays, 10:00-1:00 to help sort and restock. Updated list of requested donations are posted in Fellowship Hall on the wooden donation box. Items MUST be in season! Toiletries are especially needed; toothbrushes, toothpaste, soap, shampoo, etc.

Community Meals



We continue to support West Side Community House with a monthly meal on the 3rd Tuesday of the month September through May- **this month is on January 15th**. There are monthly sign-ups on the Lobby bulletin board. Menu suggestions are listed. Groups or individuals are encouraged to provide the food and serve.

***We are looking for an individual to help arrange monthly sign-ups. Please contact Kay Martin to help or with any questions.**



DO YOU HAVE A HEART FOR MISSIONS?

Consider being a part of the Missions Team

New ideas are welcome! New Meeting Day!
We meet the first Thursday of the month at 6 p.m. in room 207.

Let us know what mission work you are doing

for WUMC, at Simpson Metro West or Suburban Campus. Leave info in the SC Mission mailbox or email mission@westlakeumc.org

DID YOU KNOW?

Our Simpson Metro West campus holds a food pantry that serves around 80 families each month. Due to the cold and ice, the winter



months can be difficult for some seniors to get to the church to pick up their needed food. We are looking for someone to drive to a few nearby homes to deliver the groceries. The food pantry is held on the last Wednesday of the month- this month it is January 30.

We will also be collecting large reusable shopping bags to help carry the groceries. They can be put in the food donation blue wagon in the lobby.

DO EVERYTHING IN LOVE

1 CORINTHIANS 16:14

Kid's Ministry News

VALENTINE'S DAY BAKE SALE AT SUBURBAN CAMPUS

SUNDAY, FEBRUARY 10TH

The Sunday School classes, led by the 4th & 5th Graders, will hold their ever-popular Valentine's Day bake sale on Sunday morning Feb 10 from 9am – 11:45am in Fellowship Hall. Don't miss out on home made treats you can share with the ones you love. In addition to goodies, there will be flowers and other special items. You can pick up teacher gifts, a sweet treat for your neighbor, beautician, mail carrier, etc. The money raised will go to the kids Mission: Possible projects including UMCOR cleaning buckets and other kits needed internationally.



Save The Dates FOR WESTLAKE ECUMENICAL VBS!

Monday – Friday, July 15 – 19

Five churches in Westlake come together to host a big, bold and super fun Vacation Bible School. This year our theme is ROAR! Dover UCC will be the host church. Watch for more information coming out in March on how to register your kids to participate or volunteer your teen to be a counsellor/helper. Consider volunteering yourself... adults who love to tell the stories of the faith to the next generation are always welcome.

ACOLYTE TRAINING AT SUBURBAN CAMPUS

Sunday, February 3 at 9:30am in the Narthex

For those in 5-12th Grade: This training is for anyone who has never been an acolyte or would like a refresher. Bringing the light into our traditional 10am worship service is a symbolic act of carrying Christ, the light of the world, into the worship space and, at the close of service, taking Christ's presence out into the world. New this year, tolling of the steeple bell will be done by the acolytes at the conclusion of the 10am service. Our bell (which was cast in 1854) will both send the congregation out to serve and welcome those arriving for the 11:28 worship.

Meet Mrs Peiffer in the narthex (the back of the church) for the training. RSVP via email at faithformation@westlakeumc.org.

ACOLYTE SCHEDULE SIGNUP FOR 5TH-12TH GRADES:

Please sign your child up to participate as an acolyte in the 10am Sunday worship at the Suburban Campus. Acolytes should report to the narthex at 9:50am to robe and receive any special instructions for the day.

Sign up via link: <http://bit.ly/WUMCAcolyte>

WHAT ARE THE KIDS LEARNING ABOUT IN SUNDAY SCHOOL THIS MONTH?

February's Sunday School Lessons and Scripture References touch on important stories of the faith in the Old and New Testaments:

FEBRUARY 3

Jeremiah – Jeremiah 1:4-10

FEBRUARY 10

The Disciples – Luke 5:1-11, 8:1-3

FEBRUARY 17

The Beatitudes – Luke 6:17-26

FEBRUARY 24

Joseph Feeds His Family – Genesis 45:3-11, 15

Kid's Ministry News (Cont.)

Save the Date MISSION: POSSIBLE

Friday, February 22 from 6:30- 7:30pm
Fellowship Hall

This is a family night for all our Sunday School kids grade 7 and under and their parents. We will be focusing on post hurricane conditions in Puerto Rico and what it's like to live in storm damaged conditions. We'll learn about mission efforts, take part in interactive activities & games and do some hands on service.

Please RSVP your attendance at
<https://goo.gl/forms/y2X1q8INEPD6ihm33>

Going Deeper with Your Bible

Sunday, February 24 from 11:10am – 12noon

This class is for any interested 4th & 5th graders and especially for those children who received a new Bible in December from the church. Rev Don Lefelar will review the structure and history of the Bible as well as the special features of the new Bible they were just given. He'll also share tips on how to use your Bible.

Pizza lunch will be served!

Please RSVP your child's attendance via email to Ellie Peiffer at faithformation@westlakeumc.org

Youth News

MISSION TRIP MEETING

This summer, youth from both campuses will go to Cass Community Social Services Center in Detroit Michigan from July 7 to 13. Also joining us both on the trip and in planning is North Olmsted UMC. Simpson and NOUMC have taken joint mission trips together for many years, and we are excited that they'll be joining us this summer.

The trip will be planned by youth and adult leaders during monthly meetings on Sunday evenings. The February meeting will be at North Olmsted UMC on Feb. 10, beginning at 5:30 pm.

Suburban Campus February Youth Group Schedule

FEBRUARY 3 - Confirmation Only at 4 pm

FEBRUARY 10 - Mission Trip Meeting At North Olmsted UMC (4600 Dover Center Rd)

FEBRUARY 17 - President's Day Weekend;
No Youth Group

FEBRUARY 24 - Regular Youth Group Schedule

SMW Campus February Youth Group Schedule

FEBRUARY 6 - Regular Youth Group

FEBRUARY 10 - Mission Trip Meeting At North Olmsted UMC (4600 Dover Center Rd)

FEBRUARY 13 - Regular Youth Group

FEBRUARY 20 - Regular Youth Group

FEBRUARY 27 - Regular Youth Group

YOUTH MISSION TRIP FUNDRAISERS

In partnership with our Student Ministries Leadership Team, we have decided to move fundraising activities for the summer mission trip to early 2019. Stay tuned for more details about Youth Fundraising activities!

Youth News (Cont.)

WUMC SCHOLARSHIP PROGRAM - *Apply Now!*

Attention High School Seniors! We welcome our college bound high school seniors to apply for a College Scholarship sponsored and funded by Westlake UMC. The scholarship recognizes their contributions in Christian service to the church, the community and beyond.

For more information, contact Ellie Peiffer at faithformation@westlakeumc.org.

To apply, download the application from the website at westlakeumc.org/forms and submit by Friday, March 15.

Scholarship Applications

Did you know that there are several places youth from United Methodist congregations can apply for college scholarships?

The Global Board of Discipleship scholarship application is available January 3, 2019. It closes March 7, 2019. Information about these scholarships is available here: <https://www.gbhem.org/loans-and-scholarships/scholarships>.

The East Ohio Conference also offers several scholarships. More information about these are available here: <http://www.eocumc.com/scholarships/index.html> and here <https://eoumf.org/grants-and-scholarships/>. The application deadline for most of these is March 1.

Westlake UMC also offers scholarships and more information about those and the application process are forthcoming.

Financial Information

Westlake United Methodist Church Income and Expense Statement (UNAUDITED) OPERATING FUND 01, November 2018

	Current Period	Year to Date	Prior Year YTD	Prior Year	Year to Date	Annual Budget
INCOME						
CONTRIBUTION INCOME	\$43,145.66	\$469,899.44	\$39,021.19	\$442,265.63	\$558,862.86	\$617,876.69
TOTAL INCOME	43,145.66	469,899.44	39,021.19	442,265.63	558,862.86	617,876.69
EXPENSES						
ADMINISTRATIVE EXPENSE						
STAFF PARISH EXPENSE	\$26,661.97	\$271,385.71	\$24,339.44	\$297,774.83	\$303,366.33	\$335,065.94
OFFICE EXPENSE	1,771.35	14,139.72	2,528.67	11,411.78	15,690.98	17,542.00
FINANCE TEAM EXPENSE	400.60	25,069.00	188.94	2,736.92	2,965.00	3,200.00
FACILITIES EXPENSE	10,680.68	96,255.47	9,658.70	58,918.96	96,994.72	109,126.98
Subtotal Expenses	39,514.60	406,849.90	36,715.75	370,842.49	419,017.03	464,934.92
MINISTRY EXPENSE						
MUSIC EXPENSE	0.00	1,609.41	0.00	2,371.85	2,335.00	2,700.00
WORSHIP EXPENSE	605.44	7,175.54	1,658.95	4,602.00	7,976.00	8,526.00
EDUCATION EXPENSE	726.47	8,239.49	2,035.06	11,796.25	18,444.37	20,001.00
OUTREACH EXPENSE	918.67	5,681.03	632.63	2,466.20	6,693.58	7,705.00
CONNECTIONAL GIVING	6,550.25	72,458.91	10,746.79	81,689.84	72,052.75	78,603.00
Subtotal Ministry Expense	8,800.83	95,164.38	15,073.43	102,926.14	107,501.70	117,535.00
TOTAL EXPENSES	48,315.43	502,014.28	51,789.18	473,768.63	526,518.73	582,469.92
EXCESS INCOME\EXPENSES	-\$5,169.77	-\$32,114.84	-\$12,767.99	-\$31,503.00	\$32,344.13	\$35,406.77

Financial Information (Cont.)

Instead of an envelope with a check or cash on Sunday, there are two other ways you can make contributions to the General Operating Fund for Westlake UMC:



DIRECT DEPOSIT: Scheduled automatic transfers from your checking account to the WUMC account. Please contact Raphe Neapolitan, Finance Manager for the form needed at rneapolitan@westlakeumc.org



ONLINE GIVING: Use your credit card via our website at westlakeumc.org. In the lower left corner of the home page you will see a button for Online Giving — near “Live Streaming” — You do not have to login to contribute, but can create profile if desired. This can be a one-time contribution or regularly scheduled contributions.

Westlake United Methodist Church
Income and Expense Statement (UNAUDITED)
 OPERATING FUND 01, December 2018

	Current Period	Year to Date	Prior Year YTD	Prior Year	Year to Date	Annual Budget
					Budget	
INCOME						
CONTRIBUTION INCOME	\$96,578.88	\$566,478.32	\$99,641.43	\$541,907.06	\$617,876.69	\$617,876.69
TOTAL INCOME	96,578.88	566,478.32	99,641.43	541,907.06	617,876.69	617,876.69
EXPENSES						
ADMINISTRATIVE EXPENSE						
STAFF PARISH EXPENSE	\$26,411.96	\$297,797.67	\$22,200.59	\$319,975.42	\$335,065.94	\$335,065.94
OFFICE EXPENSE	909.92	15,049.64	1,490.01	12,901.79	17,542.00	17,542.00
FINANCE TEAM EXPENSE	3,364.06	28,433.06	5,752.11	8,489.03	3,200.00	3,200.00
FACILITIES EXPENSE	8,550.31	104,805.78	16,306.13	75,225.09	109,126.98	109,126.98
Subtotal Expenses	39,236.25	446,086.15	45,748.84	416,591.33	464,934.92	464,934.92
MINISTRY EXPENSE						
MUSIC EXPENSE	126.74	1,736.15	0.00	2,371.85	2,700.00	2,700.00
WORSHIP EXPENSE	356.59	7,532.13	631.25	5,233.25	8,526.00	8,526.00
EDUCATION EXPENSE	624.33	8,863.82	447.41	12,243.66	20,001.00	20,001.00
*OUTREACH EXPENSE	* 9,756.23	* 15,437.26	536.33	3,002.53	7,705.00	7,705.00
CONNECTIONAL GIVING	6,144.09	78,603.00	20,774.40	102,464.24	78,603.00	78,603.00
Subtotal Ministry Expense	17,007.98	112,172.36	22,389.39	125,315.53	117,535.00	117,535.00
TOTAL EXPENSES	56,244.23	558,258.51	68,138.23	541,906.86	582,469.92	582,469.92
EXCESS INCOME/EXPENSES	\$40,334.65	\$8,219.81	\$31,503.20	\$0.20	\$35,406.77	\$35,406.77

*Please note that the 2/3 holiday giving is represented in the Outreach account.

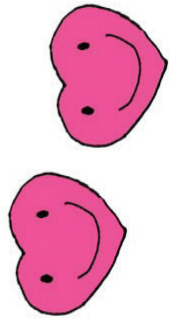


YOU CAN JOIN WESTLAKE UMC AT THE 10:00AM SERVICE
WITH LIVE STREAMING FROM OUR SUBURBAN CAMPUS.**

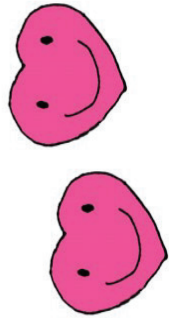



Traveling? Can't make it to church on a Sunday morning? Worship with us via our website: westlakeumc.org for the 10:00 service. You will see the link to the broadcast in the lower left corner of the home screen. You are also invited to register your attendance, send prayer requests, and/or make contributions online.

****Please note that due to copyright & licensing restrictions, not all music or multimedia presentations may be broadcast.**



February 2019



Sun	Mon	Tue	Wed	Thu	Fri	Sat
3 9am Daniel Plan (106/7) 9am Faithlinks (100) 4pm Confirmation Class 4:30pm Community Meal (SMW)	4 12:30pm ChristCare-EP (100) 5:45pm Trustees (107) 7pm ChristCare-G/J/L (205) 7pm Daniel Plan-Library 7pm Leadership Mtg. (207)	5 4pm Daniel Plan (107) 5:30pm Bread on Bridge Meal/Worship (Nehemiah)	6 11:30am Purl Girls (100) 6pm Blue Bus (SMW) 7pm 11:28 Rehearsal 7pm Daniel Plan (205) Youth Group/Worship 5:30 pm SMW	7 9am Bible Study (205) 10am UMW Board Mtg (105) 5:30pm Marijuana Anon(100) 6pm Mission Team (207) 7pm ChristCare- DL(107) 7pm Choir Rehearsal	1 7am Men's Breakfast (Sammi's Deli) 3pm Theater Group (FH) 5:30pm 3MB - (SMW)	2 10am ChristCare-GM (207) 6:30pm Alcohol Anon (SMW)
10  9am Valentine Bake Sale 9am Faithlinks (100) 4pm Confirmation Class 5pm Way Forward (207) Youth Group/Worship 5:30 pm At North Olmsted DMC	11 12:30pm ChristCare-EP (100) 12:30pm Games N Such (FH) 7pm ChristCare-G/J/L (205) 7pm Stephen Ministry (100/107) 7pm Daniel Plan-Library	12 4pm Daniel Plan (107) 5:30pm Bread on Bridge Meal/Worship (Nehemiah) 5:30pm G/Scouts-Rachael (FH) MESSENGER DEADLINE	13 11:30am Purl Girls (100) 1:30pm Arthritis Exer. (103) 2 pm ChristCare-JMc (205) 6pm Blue Bus (SMW) 7pm 11:28 Rehearsal 7pm Daniel Plan (205) Youth Group/Worship 5:30 pm SMW	14 VALENTINE'S DAY 9 am Bible Study (205) 10:30am UMW Gen. Mtg. FH) 5:30pm Marijuana Anon(100) 7 pm ChristCare- DL(107) 7pm Choir Rehearsal	15 7am Men's Breakfast (Sammi's Deli) 3pm Theater Group (FH) 5:30pm 3MB - (SMW)	16 10am ChristCare-GM (207) 6:30pm Alcohol Anon (SMW)
17 9am Daniel Plan (106/7) 9am Faithlinks (100) 12pm All Church Potluck (FH) 5pm Way Forward (207)	18 PRESIDENT'S DAY 12:30pm ChristCare-EP (100) 7pm ChristCare-G/J/L (205) 7pm Finance (207) 7pm Daniel Plan-Library	19 4pm Daniel Plan (107) 5:00pm WSCH Meal 5:30pm Bread on Bridge Meal/Worship (Nehemiah)	20 11:30am Purl Girls (100) 1pm Staff Mtg (207) 1pm Luncheon Club 1:30pm Arthritis Exer (103) 6pm G/Scouts-Susan (FH) 6pm Blue Bus (SMW) 7pm 11:28 Rehearsal 7pm Daniel Plan (205) Youth Group/Worship 5:30 pm SMW	21 9 am Bible Study (205) 5:30pm Marijuana Anon(100) 5:30pm Security Mtg. (207) 7 pm ChristCare- DL(107) 7pm Choir Rehearsal	22 7am Men's Breakfast (Sammi's Deli) 3pm Theater Group (FH) 5:30pm 3MB - (SMW) 6:30pm Mission Possible (FH)	23 10am ChristCare-GM (207) 1pm Chili Cook-Off (FH) 6:30pm Alcohol Anon (SMW)
24 9am Faithlinks (100) 4pm Confirmation Class 5pm Way Forward (207) Youth Group/Worship 5:30 pm SG	25 12:30pm ChristCare-EP (100) 7pm ChristCare-G/J/L (205) 7pm Daniel Plan-Library	26 4pm Daniel Plan (107) 5:30pm Bread on Bridge Meal/Worship (Nehemiah)	27 9am Food Pantry (SMW) 11:30am Purl Girls (100) 1:30pm Arthritis Exer. (103) 5:30pm Community Meal 6pm Blue Bus (SMW) 7pm 11:28 Rehearsal 7pm Daniel Plan (205) Youth Group/Worship 5:30 pm SMW	28 9 am Bible Study (205) 10am UMW Missions (FH) 5:30pm Marijuana Anon(100) 7 pm ChristCare- DL(107) 7pm Choir Rehearsal		

WESTLAKE UNITED METHODIST CHURCH STAFF

Rev. Mollie Brown, Senior Pastor mgbrown@westlakeumc.org
Rev. Paige Boyer, Associate Pastor pboyer@westlakeumc.org
Rev. Don Lefelar *Volunteer Visitation Pastor*
Mario Clopton-Zymler *Worship Leader, SMW*
Jill Farkas *Custodian, SC*
Cindy Fischbach *Finance Manager*
Jeanne Halaby *Nursery Assistant, SC*
Betsy Kaiser *Nursery Assistant, SC*
Annie Kaschube *Organist, Children's Choir Director, SC*
Gretty Myers *Stephen Ministry Coordinator*
Chris Neely *Director of Music Ministries*
Ellie Peiffer *Director of Faith Formation*
Lynne Wolf *Office Coordinator*
Jeannie Williams *Connection Coordinator*
WUMC Volunteer Librarian: Katie Salis, SC

OTHER PASTORS CONNECTED TO THIS CONGREGATION:

Rev. Judy Wismar Claycomb Rev. Dr. Richard Lehto
Rev. Ron Dietrich Rev. Bob Remington
Rev. Diana Guyette Rev. Tom Taylor
Rev. Don Lefelar

Coming Up

- 2/3 Seeds For Scholarships Special Collection (p. 2)
- 2/3 Alcolyte Training, SC (p. 7)
- 2/9 Mission: Twice Blessed Free Store (p. 6)
- 2/10 Valentine's Bake Sale, SC (p. 7)
- 2/17 All - Church Pot Luck, SC (p. 5)
- 2/22 Mission: Possible Event (p. 8)
- 2/23 Choir Chili Cook-Off (p. 2)
- 2/24 Going Deeper With Your Bible (p. 8)
- 3/23 The Daniel Plan - Post Assessment (p. 5)

SC – Suburban Campus SMW – Simpson Metro West Campus

*** MESSENGER ARTICLES FOR MARCH: DUE TUESDAY, FEBRUARY 12TH ***

Mailed February 1, 2019
DATED MATERIAL—DO NOT DELAY

February

(440) 871-3088
westlakeumc@westlakeumc.org

www.westlakeumc.org/simpson
Cleveland, Ohio 44102
8519 Clark Ave
Simpson Metro West Campus

www.westlakeumc.org
Westlake, Ohio 44145
27650 Center Ridge Road
Suburban Campus

**WESTLAKE
UNITED METHODIST
CHURCH**

RETURN SERVICE REQUESTED