

Front Load Bin 1.5m³ & 2.0m³

Plast-ax Design Strength:

- ✓ Box Section Top Rim
- ✓ Continuous Nesting Rim
- ✓ Large Hinge Sleeves
- ✓ 9 mm wall thickness

Galv Steel Fork Sleeves

- ✓ Moulded in M10 Fixings
- ✓ Stainless Fittings
- ✓ Front fork glance protection
- ✓ Lifting Strength Gussets



Lids & Hinging

- ✓ Box Section Lids
- ✓ No bowing or twisting
- ✓ Sit flush & tight
- ✓ Left & right reversible
- ✓ Weather proof and lockable
- ✓ Fibreglass Hinge Rod

Also available with:

- ✓ Castors
- ✓ Mould in graphics
- ✓ Hook Bin pivot frame

Extreme strength and durability

UV Stabilised LDPE

No rust, re-painting, or repairs!



[Full Specifications Page 3](#)

Designed and manufactured in New Zealand

Galv Steel FEL Pockets

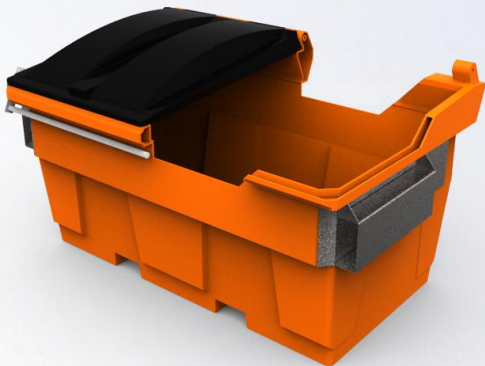
**Gusseted Design Strength
Fork Entry Protection Plate**

Internally fully moulded M10 fixings.
Fork sleeves then bolt into these from the outside; provides clean non-rust hidden fixings, internal view imaged top right.



Hinge & Lid Strength

Bins and Lids are **box section** at top rim and hinge area for incredible strength. (cut out image below)



[Full Details Page 3](#)

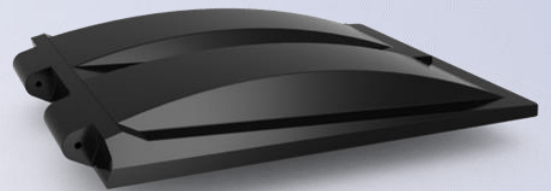
Designed and manufactured in New Zealand

Front Load Bin 1.5m³ & 2.0m³

BN206	2.0 m ³
Fill Height	1130 mm
Width x Depth	1800 x 1080 mm
Wall Thickness	9mm



FEL Twin Skin Lid	
L x W	1800 x 1080 mm



BN205	1.5 m ³
Fill Height	880 mm
Width x Depth	1800 x 1080 mm
Wall Thickness	9mm



Designed and manufactured in New Zealand