

750L Box Pallet Bin

Low 750mm Height - Easy Fill

Extreme design strength:

- Full Box Section Top Rim
- Solid Single Skin Walls
- Corner Pillar Bracing
- Side Wall Strength Ribbing

Low Density Polyethylene (LDPE)

- 6mm solid thick walls
- High impact resistant
- Stress crack resistant
- Inherent flex
- FDA Approved Food Grade
- 100% recyclable

Stack full

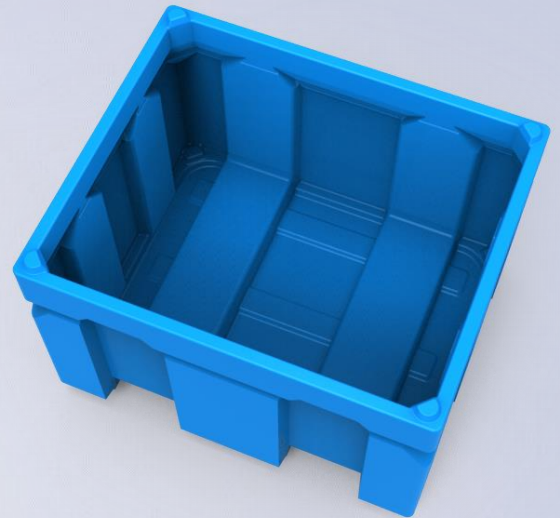
- With or without lids
- Safe stacking locators

Forklift Rotatable Option (Page 2)

Available with 64mm Drainage Bung

Single Skin Stackable Lid

Full Details Page 2



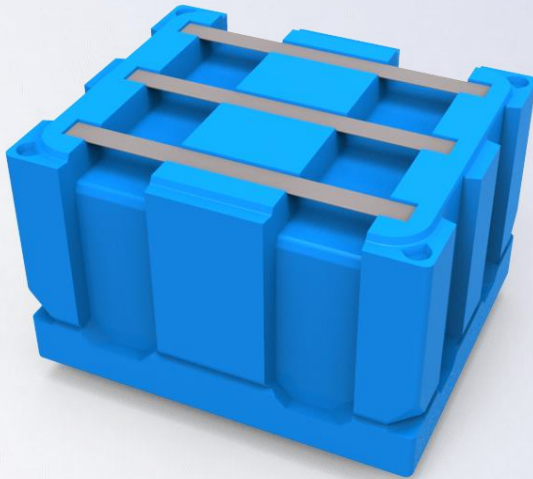
Designed and manufactured in New Zealand

750L Box Pallet Bin

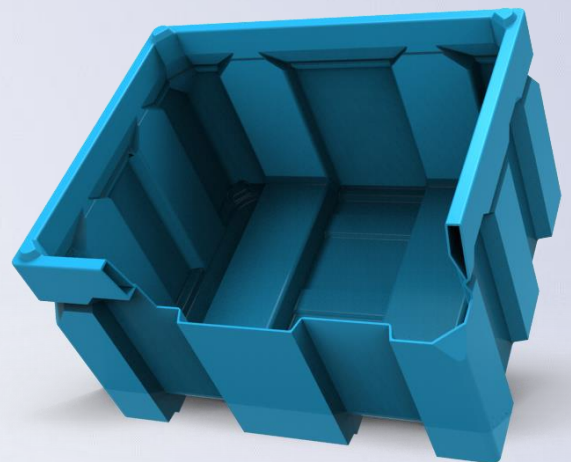
BN239

750L Box Bin with Base Slats

- 12mm LDPE Base Slats
- M10 Stainless Fittings
- Moulded in Fixings
- Allows Rotate Empty
- Replaceable



| | |
|----------------|-----------------------|
| Volume | 750L |
| Height | 750 mm |
| L x W | 1200 x 1000 mm |
| Fork Entry | 2-Way |
| Wall Thickness | 6mm |
| Material | LDPE |



Designed and manufactured in New Zealand