

# 600L Twin Skin Box Pallet Bin

**Low 750mm Height**  
**Smooth Twin Skin Inside**

### Twin Skin Insulated

- Smooth Inside
- 4 Way Entry

### Low Density Polyethylene (LDPE)

- 6mm solid thick walls
- High impact resistant
- Stress crack resistant
- Inherent flex
- FDA Approved Food Grade
- 100% recyclable

### Design strength:

- Corner Pillar Bracing
- Side Wall Strength Ribbing

### Stack full

- With or without lids
- Safe stacking locators

**Forklift Rotatable Option (Page 2)**  
**Available with 64mm Drainage Bung**  
**Single Skin Stackable Lid**

*Full Details Page 2*

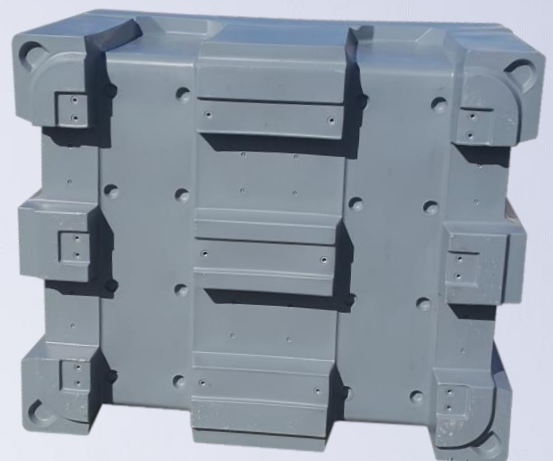
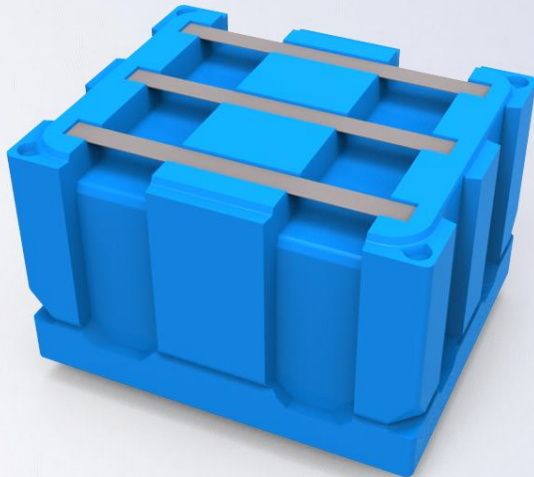


# 600L Twin Skin Box Pallet Bin

**BN241**

600L Box Bin with Base Slats

- 12mm LDPE Base Slats
- M10 Stainless Fittings
- Moulded in Fixings
- Allows Rotate Empty
- Replaceable



Volume	600L
Height	750 mm
L x W	1200 x 1000 mm
Fork Entry	4-Way or 2-Way
Wall Thickness	6mm
Material	LDPE

**Designed and manufactured in New Zealand**