

FFS PONTON 7

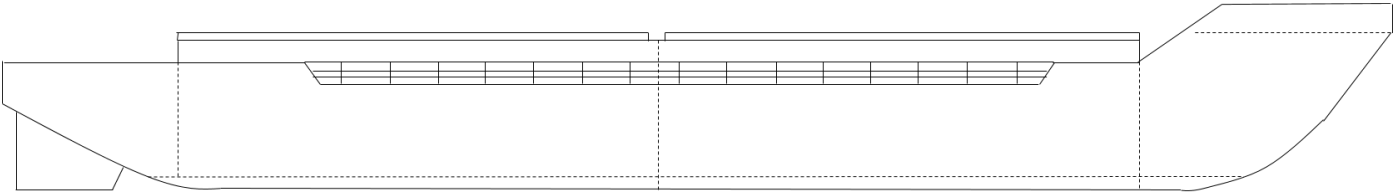
Bulk Barge



Farsund Fortøyningselskap AS
Office ph.: +47 38 39 12 29
Mail: mail@ffs-as.com - chartering@ffs-as.com
Visit: Strandgaten 16, Farsund, Norway
Postal: P.B 126, NO-4552 Farsund
www.ffa-as.com

Bulk Barge with hatches

FFS PONTON 7



General

Type of vessel	Non Propelled Bulk Barge
Year built	1980
Flag state	NOR
Port of registry	FARSUND
IMO Number	-----

Dimensions

Length	58,08.3m
Beam	12.42m
Light Draft	0,90m
Loaded draft	3.4m

Gross tonnage	1023.83
---------------	---------

Hold/Cargo Capabilities

MDWT	1700 T
Deck area hold no.1	184,7 m2
Deck area hold no.2	186,0 m2
Capacity Hold no.1	997,5 m3
Capacity Hold no.2	1002,3 m3
Deck load uniform.	5 t/m2
Hold 1:	19,80 x 9,30 x 5,30 m
Hold 2:	19,80 x 9,30 x 5,30 m

Mooring and towing equipment.

Towing arr: 2 x towing brackets
Bollards: 4 Bollards each side vertical
Fenders: Steel fenders on each side/end.

Generator driving electric and hydraulic pumps.



Farsund Fortøyningselskap AS

Office ph.: +47 38 39 12 29

Mail: mail@ffs-as.com - chartering@ffs-as.com

Visit: Strandgaten 16, Farsund, Norway

Postal: P.B 126, NO-4552 Farsund

www.ffa-as.com