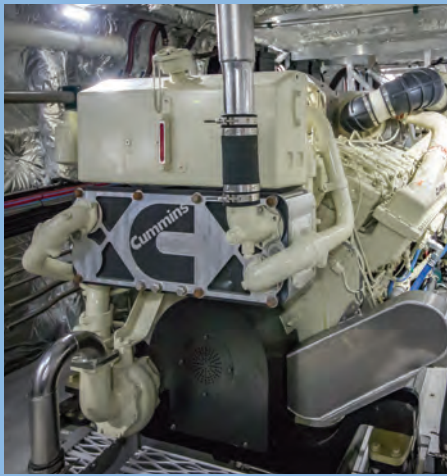




Our Best Ferry (Local) goes to *Kororā*, the first of a pair of 35-metre aluminium catamarans constructed by New Zealand builder Q-West.



Operational requirements dictated a number of interesting design features that we felt made her stand out. An asymmetric wheelhouse that includes an enclosed starboard wing control station makes enormous sense as the operators found that only a starboard station was going to be used and having to conduct docking whilst exposed to winter weather was an unattractive proposition. A forward cargo area is accessed via the port side, where a control station would ordinarily be located, and is used to store palletised loads that are discharged via a Palfinger folding knuckle-boom crane, making profitable use of an area that is generally avoided by passengers.

Q-West's approach to building these vessels was to build craft that operate for a large amount of hours and to minimise the downtime and refit work for the future. Many additional systems and processes were added to these vessels to ensure this,

including painting of the bilges, back-up systems and the oil recovery system.

With the first vessel for ferry owner Fullers, *Te Kotuku*, constructed in 2014, Q-West demonstrated its ability to provide a quality craft and its ability to project manage the construction with input from the client. Fullers felt comfortable working with Q-West which ultimately led to the awarding of contracts for *Kororā* and a sister.

In 2017 Q-West launched two other vessels, *Tōrea*, the sister ship to *Kororā*, and *Te Haa* a 19.5-metre self-righting pilot vessel for CentrePort in Wellington. A patrol vessel for the New Zealand Customs Service patrol vessel was due for launching just prior to Christmas and the patrol vessel for Victoria Police which is currently under construction is due for launching early 2018.

Q-West is optimistic about the future with many current opportunities that it is working on.



Q-west.com

BOAT BUILDERS < NEW ZEALAND

EXCELLENCE IN ALLOY



"Q-West has now built three modern passenger ferries for Fullers, allowing us to significantly upgrade our Waiheke Island fleet. After the completion of Te Kotuku in 2014, there was no question we'd chosen Q-West to deliver two additional vessels -- the largest commercial boat building contract in New Zealand history. Q-West's workmanship and quality was key for us, and they worked closely with our project managers throughout the entire process"

- Mike Horne, CEO, Fullers

