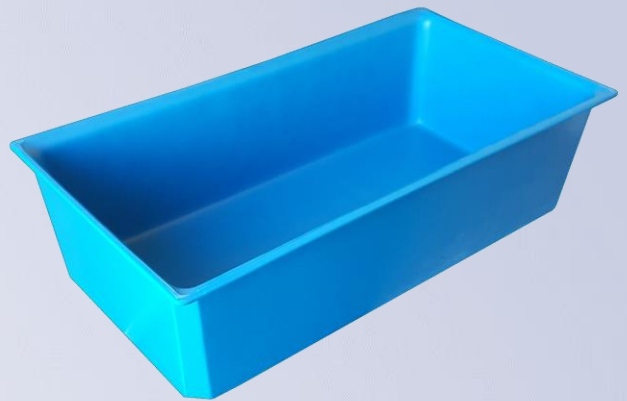


20L Dixie Tray

- Nestable
- Low Density Polyethylene
- 5mm solid thick walls
- High impact resistant
- Stress crack resistant
- Inherent flex
- FDA Approved Food Grade
- 100% recyclable
- Any Colour
- 5° Tapered Walls
- Easy Cleaning



Code	BN226
Volume	20L
Height	155 mm
Top Rim	555 x 295 mm

32L 28L 26L 23.5L 20L 19L 13L 7.5L



Designed and manufactured in New Zealand