

1250L Box Pallet Bin

1400 x 1150 x 875 mm high

Safe Stack Full Bins !!!

(bins imaged are filled with water)

Extreme design strength:

- Full Box Section Top Rim
- Solid Single Skin Walls
- Corner Pillar Bracing
- Side Wall Strength Ribbing

Low Density Polyethylene (LDPE)

- High impact resistant
- Stress crack resistant
- Inherent flex
- FDA Approved Food Grade
- 100% recyclable

65kg – 8mm wall thickness

75kg – 10mm wall thickness

Low 875mm Height - Easy Fill

Forklift Rotatable Option

Easy Cleaned & Maintained

64mm Drainage Bung

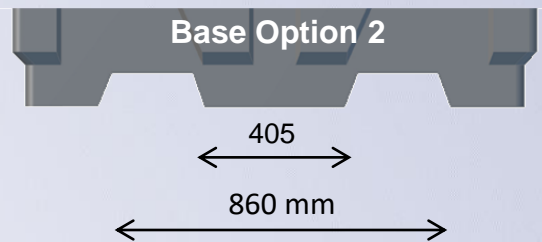
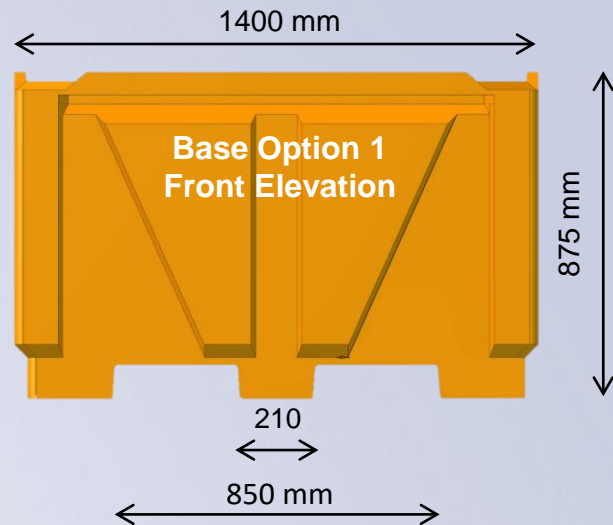
See Full Specifications Page 2



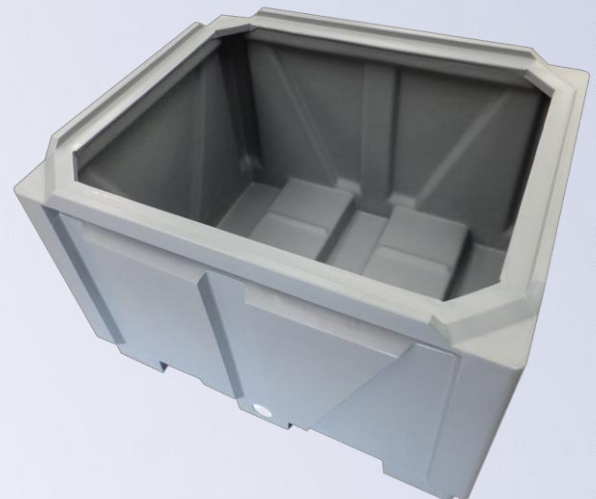
Designed and manufactured in New Zealand

1250L Box Pallet Bin

Volume	1250L
Height	875 mm
L x W	1400 x 1150 mm
Fork Entry	2-Way
Wall Thickness	10mm
Material	LDPE



Optional Accessory:
Forklift Rotatable Base Slats
(underside view)



Designed and manufactured in New Zealand