



FFS

PONTON 6

PRINCIPAL DIMENSIONS:

Length over all 55,25 m
Length pp 52,59 m
Beam over all 17,30 m
Depth moulded 4,00 m
Ligth draft 0,75 m
Loaded draft 3,25 m

Class G. L. + 100 A5 deep sea
Tonnage 921 GT / 276 NT
Built 2000

ARRANGEMENT & FORM:

Bow Raked, RoRo conection
Stern Raked with 2 skegs, 2 pushpipes aft
Bulkheads 3 longitudinal, 4 transverse
In total 20 compartments of which 19 can be used for ballast water.
Each compartment with 2 covers, deckplug & sounding pipe.

Removable railing around.
Removable signal mast and anchor winch.
Side & stern lights : Solar

CAPACITIES:

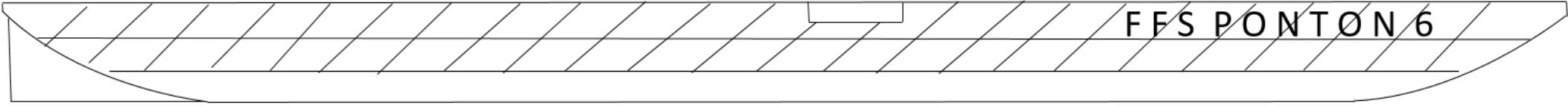
Deadweight 2286 tonnes
Deckload 10 to/ m²
Wheel load 12 to at 10 bar
Point loads 60 to at webframes
80 to at bulkheads
200 to at bulkhead cross

Optional:

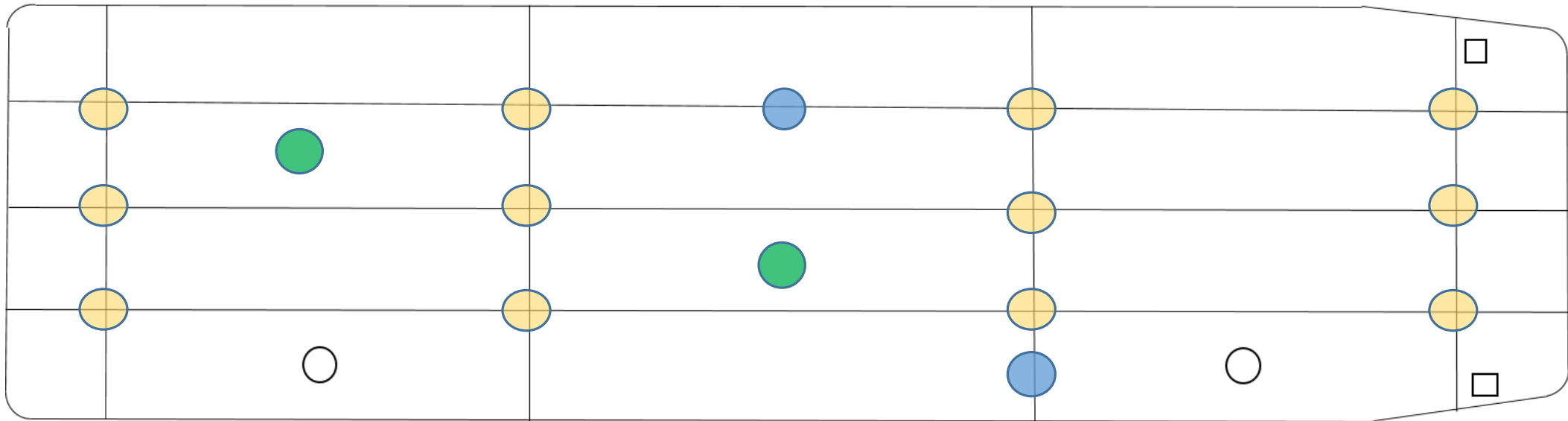
2 spud trunks at port side forward & aft, (with flush covers)
2 spuds, diameter 700 mm, length: 18,00 m
4 Ro Ro ramps: L: 12,00 m, B: 4 x 1,5 m = 6 m
In total 58 lashing eyes, SWL 49 tons



chartering@ffs-as.com +47 38 39 12 29



10 T per m2 evenly distributed cargo



-  200 t point loads on bulkhead crossing
-  80 t on bulkhead
-  70 t on webframes