

# 1400L Offal Bin

Nestable <sup>1</sup>

Stacks Full <sup>2</sup>

Forklift Rotatable <sup>3</sup>

### Design Strength:

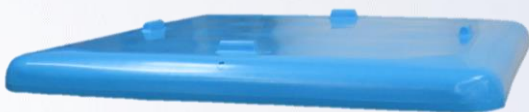
- *Tough LDPE - 10mm thickness*
- *Box Section Top Rim*  
(no open edge to crack from)
- *<sup>1</sup>Continuous Nesting Rim*  
(less wall flex and more strength)

### FDA Approved Food Grade LDPE

### Mould In Graphics

(company + numbering options)

### Single Skin or <sup>2</sup>Twin Skin Stackable Lid



### 65mm Drainage Bung

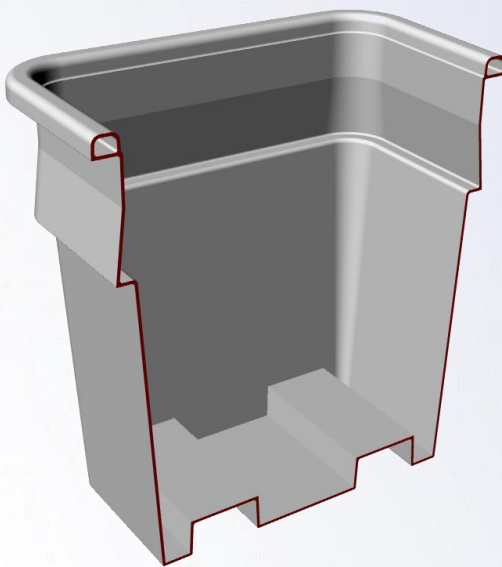
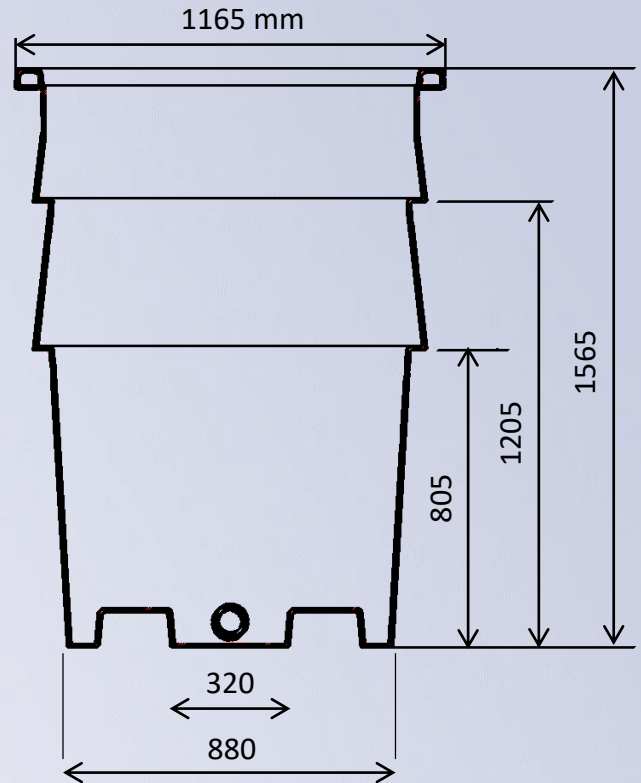
### <sup>3</sup>Galv Steel Fork Insert option

### Full Specifications on Page 2 below



### 1400L Offal Bin

Code	BN223
Volume	1400L
Height	1565 mm
Top Rim	1165 x 1165 mm
Base	880 x 880 mm
Wall Thickness	10mm
Material	LDPE



**Contact us to discuss the best bin for you**