

THE MESSENGER



WESTLAKE UNITED METHODIST CHURCH

To live so that others will become disciples of Jesus Christ for the transformation of the world



Pastoral Reflections

“A NEW YEAR AND NEW OPPORTUNITIES”

I find it difficult to believe that we are turning the page on the calendar to a new year. 2016 was an amazing time in the life of Westlake United Methodist Church. In 2016 our Stephen Ministers began offering prayer and the Sacrament of Holy Communion each week in-between our worship services, and a ministry of support for care givers was started in cooperation with Rockport UMC. In the summer, we began offering the option of live streaming our 10:00 traditional service. Each week since its inception, we have had an average of 11 members of this faith community take advantage of this option for joining us in worship. We also have had visitors join us for worship via live streaming. Through the efforts of our Trustees and many faithful volunteers, we continue to work on ways to enhance and repurpose existing space in our building in order that we may be a more welcoming place of worship and spiritual growth.

In the past year, we presented several new opportunities for individuals to grow in their faith through small groups. Last year we had approximately 50 percent of our average attendance involved in small group faith formation. As we grow in our relationship with God, we are led out into service. Each month, opportunities are available to individuals and groups to be involved in mission and outreach.

As 2016 comes to an end and 2017 begins, the members of Westlake UMC continue this church's long tradition of being in service throughout the world with individuals from our faith community traveling to Ecuador, Liberia, and Cambodia on United Methodist Volunteers in Mission trips. As I have shared with you in worship, I will be traveling with a group from our North Coast District of the East Ohio Conference of The United Methodist Church to Cambodia in early 2017. During our time in this ancient land which dates back to 7000 BC, we will learn from those involved in the emerging Cambodian Methodist Church. We will work together to develop leaders in these growing churches as we travel to various cities and villages. It is our prayer that together we

can strengthen these developing congregations and their leaders.

Preaching and teaching in Cambodia is something I never imagined I would do during my career in ministry. I suspect very few of our mission team envisioned a time when they would travel literally to the other side of the world to be in service to others. However, I think that is what being a follower of Jesus Christ is all about. When we say “YES” to following Jesus, I do not believe it is not supposed to come with conditions. It cannot be a timid, only when I am comfortable “yes.” Scripture is clear. We are called to serve others and to “go” make disciples.

As we begin this New Year, I invite you to prayerfully reflect on where you are being called to be in service. It is my prayer that each one of us will step out in faith during 2017 through worship, service, and sharing God's love in as many places and ways as possible.

In Christ,

Pastor Mollie



I would like to thank each of you for the many acts of compassion that you have bestowed upon Doug, Greg, and me during this past year. You have wrapped us in the love of God. Words cannot fully express my thanks for the beautiful cards, the delicious treats, and the many acts of kindness with which you have blessed us.

May the grace and peace of Jesus Christ be with you always.

Mollie Brown

WESTLAKE UNITED METHODIST CHURCH

27650 Center Ridge Road * Westlake, Ohio 44145 * (440) 871-3088 * westlakeumc.org

Sunday Worship at 8:15, 10:00 and 11:28 a.m.

NEWS, SMALL GROUPS, & SPIRITUAL GROWTH

YOU ARE INVITED TO...

a powerful book study on Loneliness

Lead by Pastor Mollie Gordon Brown & Rev. Renee Jacobs

**SUNDAYS at 5:00 p.m. BEGINNING JANUARY 8th
@ Westlake United Methodist Church**

Loneliness touches everyone...

rich or poor,
young or old,
retired or busy executive,
grieving widower or widow,
even those completely surrounded by people...

we all know what it means to be lonely from time to time. Loneliness may be one of the most painful experiences that we go through in this life. In the book, *Beyond Loneliness* by Trevor Hudson, experience the good news that God is always at work to build a friendship with us and that friendship can transform us and our world. Please read the introduction and Chapter 1 prior to the first group meeting. Sign up to participate on the website at westlakeumc.org/spiritual or call the office to register. A limited amount of books are available for \$10.99.



Membership Inquiry

SUNDAY, JANUARY 8TH, 3:30 P.M.

Pastor Mollie will meet with all those that are interested in joining the church on Sunday, January 8th from 3:30 - 4:30 pm at the church. If you are interested in joining this informal discussion, please contact the church office or email epeiffer@westlakeumc.org.

UMW General Meeting

THURSDAY, JANUARY 12TH AT 10:30 A.M.

Women of our church -- you are all welcome to this friendly group. Start the new year by finding new friends. Remember to bring your sandwich -- dessert and beverage will be provided. At 1:00 p.m. Mr. Bob Wills will present an interesting program on "Finding King Tut's Tomb". Please join us.

COFFEE FELLOWSHIP SPONSORS

January 1	<i>New Year's Day!</i>
January 8	JT & Donna Lovins
January 15	Calvin & Sue Herrick
January 22	<i>OPEN</i>
January 29	<i>OPEN</i>



Sponsorships are available for our weekly coffee hours following Worship on Sundays. If you would be interested in sponsoring coffee hour, please submit an envelope with the sponsorship amount included (\$35 per Sunday) at the office in the offering plate. You may also indicate a remembrance or celebration for a certain date if desired (though not necessary). Checks made payable to WUMC. **You can find Sponsorship forms on the table near the coffee at Fellowship Hour and in the lobby or on page 9 of this newsletter.**

Attention Crafters!

TUESDAY, JANUARY 24TH, 7:00 P.M.

We are gathering beginner and experienced crafters together to create handmade **Valentine** cards for the shut-ins of WUMC. No experience necessary. Just come and get creative! Contact Jane Shami if you are interested at jane423@me.com or (216) 347-4499.



Safety Pins and Crosses

As we make New Year's resolutions, let's recommit ourselves to our church's mission statement "to live so that others will want to follow Jesus". You are invited to read an article from the December 6th issue of *Ministry Matters* and which helps us to focus on the messages our lives give to others about following Christ.

Safety Pin or a Cross? by Rev. Kira Schlesinger can be found at http://www.ministrymatters.com/all/entry/7884/safety-pin-or-a-cross?utm_campaign=shareaholic&utm_medium=email_this&utm_source=email

Breakthrough Prayer Initiative

with Rev. Sue Nilson Kibbey
Author of Flood Gates: Holy Momentum for a Fearless Church

**SATURDAY, FEBRUARY 25TH FROM 9:00 A.M.— 2:30 P.M.
AT WESTLAKE UMC**

What happens when a congregation unites to pray collectively and consistently for God to break through in new and miraculous ways? We can launch our congregation into the kind of churchwide **breakthrough prayer initiative** that fuels the atmosphere of possibility, and begins to shift our focus up-and-outward. Breakthrough prayer can be incorporated into what already happens in your daily life as a congregation. In the workshop, you will:

- Become equipped with inspiration, guidance, and practical ideas from churches of all sizes and settings who have implemented with innovation & impact
- Learn how to utilize breakthrough prayer through key aspects of your weekly worship
- Develop your church's heart to reach its neighborhood with the message and love of Christ
- Help shift the focus, direction and future of your church by implementing a simple breakthrough prayer initiative

COST OF THE WORKSHOP IS \$35 PER PERSON AND INCLUDES A SIMPLE LUNCH

Registration Requirements: Registration space is limited and will open on Monday, December 5th online at westlakeumc.org/spiritual

Rev. Dr. Sue Nilson Kibbey currently serves on the West Ohio Conference's executive staff as the Director of Missional Church Initiatives. Sue leads the Missional Church Consultation Initiative (MCCI), a rigorous 360-degree coaching and training effort to jumpstart a new life cycle of ministry fruitfulness. More than 70 congregations across four different United Methodist Conferences have moved off plateau/decline and forged forward through the intensive work of the MCCI. Sue's newest book published by Abingdon Press,, *Flood Gates: Holy Momentum for a Fearless Church*, features detailed content on Breakthrough Prayer.



**WESTLAKE UNITED METHODIST CHURCH
27650 CENTER RIDGE ROAD, WESTLAKE, 44145 PHONE (440) 871-3088**

COMPASSION & CONGREGATIONAL CARE



Individual Prayer Time & Communion WITH PRAYER PARTNERS SUNDAYS 9—9:30 A.M. OR 11—11:30 A.M.

Stephen Ministers are available every Sunday morning in Room 203 from 9:00 – 9:30 and also 11:00-11:30 to offer a quiet, reflective time for individual prayer and communion. We also have sets of prayer beads available for you during this time.

All are welcome!

Caregivers Support Group

MONDAY, JANUARY 16TH
7:00—8:00 P.M.

Westlake UMC, in conjunction with Rockport UMC, holds monthly meetings on the first Monday of the month at Westlake UMC (though due to the New Year holiday, we'll convene two weeks later!) Caregivers are welcome to bring their care partner. A separate space and activities are available for them, staffed by volunteers. The group is facilitated by Thurston Cosner, Stephen Leader from Rockport UMC, and Gretty Myers, Stephen Leader from Westlake, UMC.



Parish Nurse News

Kathy Tafuri, our WUMC Volunteer Parish Nurse, offers free blood pressure screenings most Sundays after coffee hour. Kathy is also available most Wednesday afternoons from 1 to 3 p.m. to address your health concerns, plus offer free blood pressure screenings.

You can reach her via the church office (440) 871-3088 x17, or email ktafuri@westlakeumc.org.

Memorial Reception Help Needed!

The church is looking for additional people willing to assist in the important work of helping families at the time of a memorial service. Your name will be added to the list of volunteers willing to be called to work in setting up, serving, or cleaning up for a reception following a memorial service. Please contact the office if you can volunteer via phone at (440) 871-3088, or send an email to westlakeumc@westlakeumc.org

Prayer Beads

God calls each one of us into a relationship with him through prayer. Christian (Anglican) prayer beads are a tactile aid to prayer as a way to connect with God. The beads become a way to deepen your prayer life by encouraging not only the mind but the body to participate in prayer. The prayers keep the mind focused and the passing of beads through the fingers keeps the body engaged in prayer. Christian prayer beads have a great deal of symbolism woven into the design and give some structure to praying. Sets of prayer beads are available at no cost for you and others who need to be reminded that God is with us.

Stephen Ministers are available every Sunday morning in Room 203 from 9:00-9:30 and again 11:00-11:30 to help you understand the impact prayer beads can have in your prayer life. Please stop by on Sunday morning for your own set of prayer beads or a set for someone else and a brief explanation of how to use them.

We are able to make these prayer beads available with a generous donation of beads from Eleanore Lehto, handmade crosses from Alex Combs, and the creative hands of Linda Eads and Mary Saffles.

Questions? Please contact Gretty Myers at grettypmyers@sbcglobal.net

“Rejoice always, pray without ceasing, give thanks in all circumstances; for this is the will of God in Christ Jesus for you.” ~1 THESSALONIANS 5: 16-17



Medicare News

MEDICARE ADVANTAGE DISENROLLMENT PERIOD (MADP) JANUARY 1ST THROUGH FEBRUARY 14TH, 2017

During this time period, you can leave your Medicare Advantage plan and return to Original Medicare. If you use this election period to disenroll from a Medicare Advantage plan, you are eligible for a Special enrollment period (SEP) to enroll into a stand-alone Medicare Prescription Drug Plan. **Note:** Ohio law provides you the opportunity to apply for a supplemental policy any time during the year. The supplemental plans help pay for Original Medicare Part and A and B deductibles and co-insurances.

QUESTION: *I missed shopping for a supplemental plan during the Open Enrollment Period October 15th–December 7th; can I change my insurance now?*

ANSWER: **It would be important to understand your Medicare coverage to respond to this question.**

Do you have Medicare as your Primary coverage with a supplement? Actually, in Ohio, you can apply to a supplemental plan anytime during the year!

Do you have a Medicare Advantage plan (MA) with a private insurance? You can use the Medicare Advantage Disenrollment Period (MADP) January 1st through February 14th to switch to Original Medicare and apply to a supplemental plan. You would also elect a Medicare drug plan to complete your coverage.

To avoid any gap in coverage, you would disenroll from your Advantage plan **ONLY** after you have been approved by a supplemental plan.

Please contact an OSHIIP counselor to help you understand your options!

*Patricia Whited Stineman, Medicare Counselor
(440) 781-1383*

MISSION OPPORTUNITIES & UPDATES

NEW OPPORTUNITY!

SIMPSON UMC COMMUNITY MEAL **Sunday, January 8th at 4:30 p.m.**

Simpson UMC serves a monthly community meal on the first Sunday of the month at 4:30. As we know with our community meal, it takes many people to make this happen. We are looking for a few people to go to Simpson, join in fellowship, and help with clean up. They are also looking for people who can provide special music during the meal. Simpson UMC is located at 8519 Clark Ave, about 15 minutes from WUMC. Sign up on the lobby bulletin board.

We are also looking for a couple people for a few specific needs. They need someone who has experience with grant writing, and also someone who could lead a senior exercise program. Please contact Kay Martin or John Carreon if you know someone who can help.

TWICE BLESSED FREE STORE @ NEHEMIAH **Saturday, January 21st, 9:00 a.m.—1:00 p.m.**

WUMC will be serving by helping shoppers at the Twice Blessed Free store at Nehemiah Mission. Meet at WUMC at 8:30 a.m. to carpool, or meet up with us at 9:00 at the Twice Blessed Store (6515 Bridge Avenue, Cleveland). Stay until 1:00 p.m. Please sign up on the bul-

letin board. Bring a friend!

KIDS IN NEED RESOURCE CENTER On February 11th we will be going to Kids in Need. Times TBA.

CLOTHING COLLECTION FOR CAMBODIA

North Coast District is leading an UMVIM trip to Cambodia January 19—February 2, 2017. Rev. Mollie Brown, Chris Tilton, and Kay Martin will be going and are collecting light weight children's clothing: PJ's, T-shirts, shorts, the Cambodians are quite small so nothing larger than an adult small. There will be a suitcase in the lobby and in Fellowship Hall for your donations beginning January 1st.

MANY THANKS to everyone who participated in our many opportunities during November and December. We served 111 people at Westside Community House in November for their Thanksgiving meal! We sent many dozens of cookies from our cookie-baking day WSCH for their Christmas party. Thanksgiving cards were handmade and sent to those we hold in special care and cookies sent out in December. Thanks to all the groups who had Christmas mission projects: Flat Rock gift tree, gifts for a teen shelter, socks and underwear collection, Lorain elementary school clothing donations, and the 6th & 7th grader Ganta UM hospital donation! Please let us know what your group is doing!

CHRISTIAN ED & FAMILY EVENTS



From the Desk of Christian Ed

Mrs. Carol Ryan — cryan@westlakeumc.org

SUNNY THANKS FROM SEEDS FOR SCHOLARSHIP

On behalf of the WUMC Scholarship Committee, as well as future scholarship recipients of all ages, please accept our thanks. On December 4th, the congregation graciously welcomed our presence and shared narrative of the scholarship program's future. It was a pleasure to talk about the program, its prospective and past recipients both in worship as well as at coffee hour. Once again, thank you for your generous donations both on the 4th as well as via the poinsettia program. Know a high school WUMC senior; be sure to tell them to find our scholarship application link in February!

SCHOLARSHIP ENDOWMENT, GEORGE VLACH

On December 14th, the family and friends of George Vlach gathered to celebrate his life. Frequently, those gathered spoke of a commitment to hard work and putting in effort to get ahead. This clear focus coupled with George's, and Diane Ahlers' (his beloved wife) commitment to education helps us appreciate why the WUMC Scholarship Fund was earmarked as caretaker of memorial gifts. These memorial gifts will further secure our scholarship program's base endowment, and will keep the memory of George present for future generations at WUMC.

VOLUNTEER SPOTLIGHT: BOBBI KIBBEY & MASON DOUCETTE

Together, Bobbi and Mason, make up "team middle school" on Sunday mornings. It takes special people to rock it out with middle schoolers. They are intuitive, quick, and sometimes quiet but rarely still. After a Sunday school class in September, Bobbi exclaimed after class "14... 14 middle schoolers!" Coming from anyone else, this is a call for help with a hint of panic. But Bobbi was and is thrilled with our middle school growth, and nobody is more in the zone with tweens than our Bobbi Kibbey. They crack the Bible, keeping donut crumbs clear, and have quickly learned Bobbi isn't there to answer the questions but guide them to finding their own



**Milk
&
Cookies**

SUNDAY, FEBRUARY 5th at 11:00 a.m.

Parents & guardians are invited to join the Kinders and Firsties for a Milk and Cookies Open House after the 10:00 service in their Classroom on February 5th!

Come meet your child's friends, and other parents, plus hear from their teachers!

answers. Partner Bobbi with a soccer playing, friend of crutches, upperclassmen from North Olmsted High School named Mason, and this teaching team is perfection. Imagine the average boy, in high school. Now, picture Mason who comes in most Sunday mornings knowing we basically will let the tweens give him grief, ask him to set-up games, and use him to lure kids into the discussion through his own answers. If Sunday mornings aren't enough, Mason volunteered as a leader at our Kids Play In Party and gives up a full 40-hour week as a middle school VBS counselor in the summers. We serve God in many ways. It is special when through their service and response to God's grace; we witness folks' true gifts. Thank you to Bobbi and Mason!

MINI MISSIONARIES

Many thanks to our Sunday school teachers for helping our classes collect winter gear then toys, make cards for sick congregants, and for 6th-7th Grade's Kids Play In Event. This last event welcomed over two-dozen young friends to a fast-paced, children's Christmas party complete with gift making and hot cocoa drinking. The

tweens planned it, lead it, and worked hard throughout the afternoon to keep their guests smiling while their parents earned an afternoon child-free, and Ganta UMC Hospital in Liberia earned a much needed donation. If you or your child has a suggestion for a future mini-mission project, please contact Kaela or Carol Ryan.

THIS SUNDAY! Email

Do you have a child or youth participating in the Sunday school program? Are you receiving our THIS Sunday updates, or youth group emails? If not, please contact Carol Ryan via cryan@westlakeumc.org to get connected and register your kiddo!

DATES TO KNOW

- January 1:** 3rd grade and under will party; 4th grade and up are invited to worship with their families
- January 29:** 5th Sunday Worship
- February 5:** Milk & Cookies for Kinders, Firsties, and Parents/Guardians
- February 12:** The Annual Valentine's Day Bake Sale

WUMC Library Corner

WUMC would like to express thanks to the following members of the congregation for their donation of Celebration Books during the month of December:

- Jim and Jackie Gramlich
- Ken Wardell
- Nanci and Rik Danburg

Please stop by the library soon to see our latest offerings for both children and adults.



Celebration books are available all year long for purchase. Please check with Nanci Danburg if you are interested.

COUPON LABELS NEEDED



The United Methodist Women are collecting Box Tops for Kids at Flat Rock. The collection box is located under the mailboxes across from the copy room door. Labels are on General Mills cereal boxes, Campbell soup cans, Betty Crocker cake and brownie mixes, and several other items. Please help us collect these, and they will supply many valuable items for the children. Any questions? Please contact Betty Levis.

ATTENTION YOUTH!

... Have you heard?

UPCOMING YOUTH GROUP SCHEDULE:

- January 1st** No Youth Programming
- January 8th** Sunday School (9AM)
Confirmation (10AM)
NO EVENING YOUTH!
- January 15th** 3-7pm Tubing (Exact Info TBA)
If there is not enough snow, we will go lazer tagging. Stay tuned for more details, and mark your calendars!
- January 22nd** Regular Youth (5-8)
- January 29th** Regular Youth (5-8)

CONFIRMATION DATES: (All classes at 10 a.m.)

- January 1st** No Class
- January 8th** Regular Class
- January 16th** Regular Class
- January 22nd** Regular Class
- January 29th** Worship with your family/mentors

QUESTIONS? NOT GETTING THE WEEKLY EMAILS WITH YOUTH UPDATES? NEED TO UPDATE YOUR EMAIL?

Contact Rachael Haning, WUMC Youth Coordinator at youth@westlakeumc.org





**YOU CAN JOIN WESTLAKE UMC AT THE 10:00 SERVICE WITH OUR
LIVE STREAMING!****



Traveling? Can't make it to church on a Sunday morning? Worship with us via our website: westlakeumc.org for the 10:00 service. You will see the link to the broadcast in the lower left corner of the home screen. You are also invited to register your attendance, send prayer requests, and/or make contributions online.

***Please note that due to copyright & licensing restrictions, not all music or multimedia presentations may be broadcast.*

FINANCIAL INFORMATION

Instead of an envelope with a check or cash on Sunday, there are two other ways you can make contributions to the General Operating Fund for Westlake UMC:

\$ DIRECT DEPOSIT: Scheduled automatic transfers from your checking account to the WUMC account. Please contact Sharon Parks, Finance Manager for the form needed at sparks@westlakeumc.org

\$ ONLINE GIVING: Use your credit card via our website at westlakeumc.org. In the lower left corner of the home page you will see a button for Online Giving (near "Live Streaming"— You do not have to login to contribute, but can create profile if desired). This can be a one-time contribution or regularly scheduled contributions.

Income Statement— November 2016

	November 2016	YTD 2016	2015	YTD 2015	YTD Budget	Annual Budget 2016
INCOME						
CONTRIBUTION INCOME	\$38,244.43	\$464,622.91	\$49,123.69	\$473,721.42	\$517,613.39	\$570,000.00
TOTAL INCOME	\$38,244.43	\$464,622.91	\$49,123.69	\$473,721.42	\$517,613.39	\$570,000.00
EXPENSES						
ADMINISTRATIVE EXP.						
STAFF PARISH EXP.	\$27,679.87	\$299,493.89	\$26,646.74	\$290,529.55	\$325,882.76	\$355,634.00
OFFICE EXP.	1,218.06	20,366.06	2,238.78	22,034.33	20,764.82	22,583.40
FINANCE TEAM EXP.	237.56	2,726.26	89.50	2,530.28	1,746.63	1,880.00
FACILITIES EXP.	2,742.84	51,513.92	8,723.13	70,412.87	72,463.55	83,546.60
Subtotal Expenses	31,878.33	374,100.13	37,698.15	385,507.03	420,857.76	463,644.00
MINISTRY EXPENSE						
MUSIC EXP.	0.00	711.33	694.94	1,243.59	3,825.00	4,250.00
WORSHIP EXP.	502.86	6,352.39	808.42	6,847.344	6,981.25	8,375.00
EDUCATION EXP.	3,337.79	14,215.82	2,088.96	14,345.82	15,715.00	18,090.00
OUTREACH EXP.	853.57	5,918.72	1,704.22	2,405.31	6,790.00	8,065.00
MISSION EXP.	5,642.67	71,295.37	5,432.09	60,039.32	56,313.20	67,576.00
Subtotal Ministry Expense	10,336.89	98,493.63	10,728.63	84,881.38	89,624.45	106,356.00
TOTAL EXPENSES	42,215.22	472,593.76	48,426.78	432,690.26	474,731.05	570,000.00
EXCESS INCOME/EXPENSES	-\$ 3,970.79	-\$ 7,970.85	\$ 696.91	-\$ 7,395.62	-\$ 1,343.89	\$0.00

CHURCH FAMILY FOCUS

Life Events



WITH SYMPATHY

Carl Antel, husband of Dot Antel and long-time Westlake UMC member, passed away December 11th. A memorial service to celebrate his life was held on December 21st at Westlake UMC, officiated by Rev. Mollie Brown.

George Vlach, husband of Diane Ahlers, passed away December 9th. A memorial service to celebrate his life was held on December 14th at Westlake UMC, officiated by Rev. Mollie Brown.

John Harris, uncle of Patti Barnes, passed away in December.

Don Pickersgill, father of Debbie Zeager, passed away in December.



THANK YOU!

Sincere thanks to the ladies who made the delicious Christmas cookies and to Ellie who came to visit me and brought the cookies to my apartment at The Normandy.

With appreciation,
Flo Andrews

Dear Westlake UMC,
Thank you for your kind donation of numerous Christmas gifts for Westlake House and Bishop House! Your gifts bring countless smiles and show our individuals that they are lovingly through of during the the holiday season. We hope you have a very blessed and Merry Christmas!

Yours in faith,
Karen L. Kilgo, President/CEO Flat Rock Homes, Inc.

Westlake UMC —
We consider you our guardian angels to Kaylin & Cayden. You have done so much to support our family over the past two years. Your kindness and help have been a blessing to our family. May you all have a blessed Christmas!
Calvin and Sue Herrick

WE ARE LOOKING FOR SPONSORS FOR COFFEE HOURS FOR JANUARY THROUGH MAY. PLEASE FILL OUT THE FORM BELOW AND DROP AT THE OFFICE OR IN THE OFFERING PLATE ON SUNDAY WITH YOUR SPONSORSHIP DONATION.

2017 COFFEE FELLOWSHIP SPONSORSHIP



\$35.00 WILL SPONSOR A SUNDAY COFFEE FELLOWSHIP TIME*!

Encourage fellowship!

Welcome the WUMC Church family by funding a Sunday Coffee Fellowship Time.

You don't have to do anything! All work will be done by the Hospitality Team.

Enjoy fellowship with your church family!

**Fellowship Time encompasses the entirety of Sunday morning, with coffee and pastries available for all Worship participants.*

Unless you request a specific date, we will assign a Sunday that is open on the calendar. Your name will be displayed on table signage and listing in the weekly bulletin.

Name: _____
(sponsoring individual, family or group)

Requested date? (opt.) _____

In celebration or remembrance? Yes No

****Please leave this form and payment in the collection basket or at the church office****

MASON JAR nightLight

Because Jesus is the light of the world, his followers don't need to fear darkness or life's dark times. Make this nightlight to remind you of Jesus' light and presence.



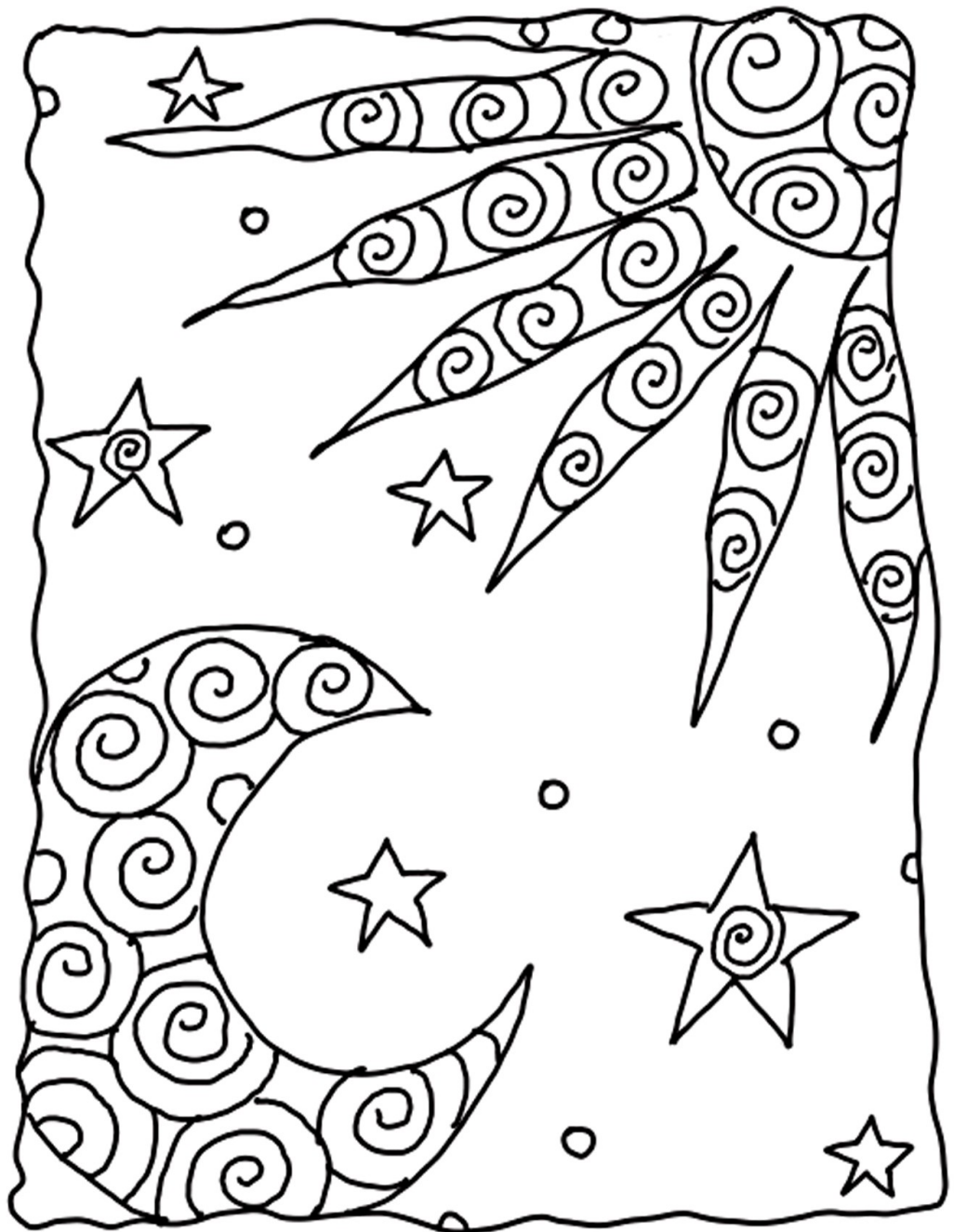
What you need:

- Work area with good ventilation
- Mason jar
- Clear glue that works on glass
- Paintbrush
- Glass stones
- Tealight candle
- Lighter
- Adult supervision

What you do:

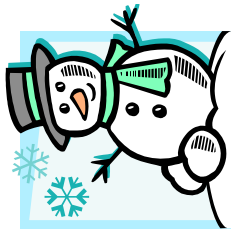
1. Starting at the top of the jar, brush glue on a small section.
2. Press glass stones onto the glue in rows. Let dry.
3. Continue gluing stones, in small sections, until the entire jar is covered.
4. When dry, place a candle inside. Light with adult help.




"In the same way, let your light shine before others, that they may see your good deeds and glorify your Father in heaven." - Matthew 5:16





January 2017




Sun	Mon	Tue	Wed	Thu	Fri	Sat	
1  10:00 a.m. Worship Service	2 9am Stephen Min. Class (107) 12:30pm ChristCare-EP (100) 7pm ChristCare-G/J/L (205)	3 7:30pm 11:28 Rehearsal	4 12pm Purl Girls (100) 1pm Parish Nurse Available 1:30pm Arthritis Exer. (103) 2pm ChristCare-JMc (205) 7pm ChristCare-GM (100/7)	5 10am UMW Board Mtg (105) 5:30pm Marijuana Anon(100) 6:15pm Handbell Choir 7pm CC — DL (205) 7:30pm Choir Rehearsal	6 STEPH OUT →	7 6:30pm ChristCare — J/L. K.	
8  3:30pm Membership Inquiry 4:30pm Simpson UMC Meal 5pm Beyond Loneliness (107)	9 9am Stephen Min. Class (105) 12:30pm ChristCare-EP (100) 12:30pm Games N Such (FH) 7pm ChristCare-G/J,L (205) 7pm Trustees (105) 7pm Stephen Ministry (107)	10 5:00 pm Oberlin Choristers (FH) 7:00pm Mission Team (107) 7:30pm 11:28 Rehearsal	11 9:30am All Staff Mtg (205) 11:30am Purl Girls (100) 1pm Parish Nurse Available 1:30pm Arthritis Exer. (103) 7pm ChristCare-GM (100/7)	12 10:30am UMW Gen. Mtg (FH) 5:30pm Marijuana Anon(100) 6:15pm Handbell Choir 7pm CC — DL (205) 7:30pm Choir Rehearsal	13 STEPH OUT →	14 9am—12pm Leadership Council Book Study Retreat (Westlake Porter Library)	
15 <i>Baptism/New Members</i> 5pm Beyond Loneliness (107) <i>Youth Snow Tubing 3-7 p.m.</i>	16 <i>Office Closed</i> 9am Stephen Min. Class (105) 12:30pm ChristCare-EP (100) 7pm ChristCare-G/J,L (205) 7pm Finance (105) 7pm Carers Group (100 & 107)  <i>Pastor Mollie in Cambodia</i>	17 5:00 pm Oberlin Choristers (FH) 7:30pm 11:28 Rehearsal MESSENGER DEADLINE	18 12pm Purl Girls (100) 1pm Parish Nurse Available 1:30pm Arthritis Exer. (103) 2pm ChristCare-JMc (205) 7pm ChristCare-GM (100/7)	19 10am CWRU (107) 5:30pm Marijuana Anon(100) 6:15pm Handbell Choir 7pm CC — DL (205) 7:30pm Choir Rehearsal	20 PASTOR MOLLIE IN CAMBODIA →	21 <i>Twice Blessed Store</i> <i>9 a.m.—1 p.m.</i> 6:30pm ChristCare — J/L. K.	
22 5pm Beyond Loneliness (107) <i>Youth Group 5-8 p.m.</i>	23 9am Stephen Min. Class (105) 12:30pm ChristCare-EP (100) 7pm ChristCare-G/J,L (205)	24 5:00 pm Oberlin Choristers (FH) 7:00 pm Card Making (107) 7:30pm 11:28 Rehearsal	25 12pm Purl Girls (100) 1pm Parish Nurse Available 1:30pm Arthritis Exer. (103) 5:30pm Community Meal 7pm ChristCare-GM (100/7)	26 10am CWRU (107) 10am UMW Missions (FH) 5:30pm Marijuana Anon(100) 6:15pm Handbell Choir 7pm CC — DL (205) 7:30pm Choir Rehearsal	27 PASTOR MOLLIE IN CAMBODIA →	28 6:30pm ChristCare — J/L. K.	
29 5pm Beyond Loneliness (107) <i>Youth Group 5-8 p.m.</i>	30 9am Stephen Min. Class (105) 12:30pm ChristCare-EP (100) 7pm ChristCare-G/J,L (100) 7pm Leadership Council (205)	31 5:00 pm Oberlin Choristers (FH) 7:30pm 11:28 Rehearsal PASTOR MOLLIE IN CAMBODIA →	PASTOR MOLLIE IN CAMBODIA				

WESTLAKE UNITED METHODIST CHURCH STAFF

Rev. Mollie Brown	Senior Pastor: mgbrown@westlakeumc.org
Annie Kaschube	Organist, Children's Choir & Handbell Choir Director
Betsy Kaiser	Nursery Assistant
Carol Ryan	Christian Education Director
Don Lefelar	Visitation Pastor
Ellie Peiffer	Small Group & Welcoming Ministries
Gretty Myers	Stephen Ministry Coordinator
Jeanette Albrecht	Nursery Assistant
Jeanne Halaby	Nursery Assistant
Jill Farkas	Custodian
Joshua Konow	Director of Adult Choir
Kathy Tafuri	Volunteer Parish Nurse
Lynne Wolf	Office Assistant
Morgan Lux	Nursery Assistant
Patti Barnes	Nursery Coordinator
Rachael Haning	Youth Coordinator
Rich Gallo	11:28 Worship Leader
Sharon Parks	Finance Manager
Stephanie Fries	Church Operations Manager

WUMC Librarians: Nanci Danburg & Katie Salis

OTHER PASTORS CONNECTED TO THIS CONGREGATION:

Dr. Richard Parks	Rev. Ron Dietrich	
Rev. Don Lefelar	Rev. Bob Remington	
Rev. Diana Guyette	Rev. Tom Taylor	

Coming up:

- 1/8 Membership Inquiry (p. 2)**
Simpson UMC Community Meal (p. 5)
Beyond Loneliness Book Discussion (p. 2)

- 1/12 UMW General Meeting (p. 2)**
Women of WUMC — join in for a general meeting, bring lunch, and hear about King Tut's tomb!

- 1/15 Baptism Sunday & New Members Received**
Youth — Snow Tubing! (p. 7)

- 1/16 Caregiver's Support Group (p. 4)**

- 1/21 Twice Blessed Free Store Mission**
Opportunity at Nehemiah Mission (p. 5)

- 1/24 Valentine Card Making (p. 2)**
Help make valentines for shut-ins and those needing some extra love and greetings!

* MESSENGER ARTICLES FOR FEBRUARY: DUE SUNDAY, JANUARY 15TH *

Mailed December 30, 2016
DATED MATERIAL—DO NOT DELAY



**Live-streamed via our website*

11:28 a.m. (Contemporary)
10:00 a.m. (Traditional)*
8:15 a.m. (Reflective)
Sunday Worship at

westlakeumc@westlakeumc.org
www.westlakeumc.org
(440) 871-3088
Westlake, Ohio 44145
27650 Center Ridge Road

CHURCH
UNITED METHODIST
WESTLAKE

RETURN SERVICE REQUESTED