

Styllus Illusion 3D

CHARACTERISTICS

USES

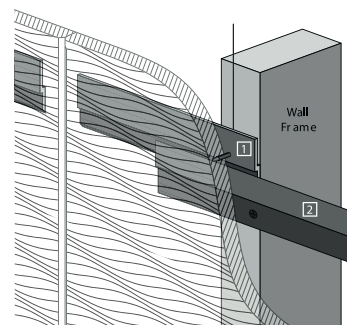


Styllus Illusion Fixing

The Aluminium "Z" bracket fixing system provides an economical concealed fix, wall panel mounting system using minimal space. (6mm from the wall to the rear of the panel.)

"Z" Brackets should be fixed with construction adhesive as well as an appropriate length screw onto the rear of the panel, and on to the wall to be fixed to. Allow time for adhesive to cure before proceeding any further. The brackets then "lock" together when the panel is dropped vertically as shown in the diagram.

As Styllus Illusion panels have a natural warp in them due to the coating process make sure panels are as flat as possible when installing "Z" bracket to panel. This helps ease process of installation.



Fixing Distances:
Panels should be fixed at least 1200mm.

Recommended adhesive:
Simpson ISR 70-05 (by Bostik)

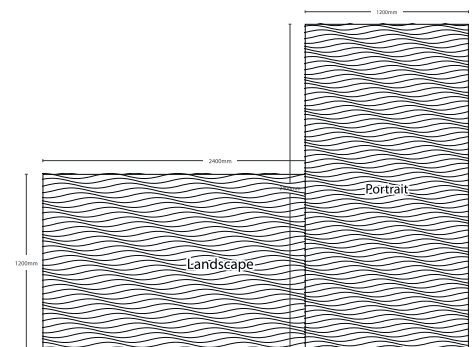
Styllus Illusion Orientation

All the Styllus Illusion designs are available as a landscape or portrait panel. Standard sheet size is 2400 x 1200.

Standard finish is a thermolaminate coating over a solid moisture resistant MDF core. Plywood and Melamine MDF substrates are available on selected designs.

Specification: Styllus Illusion® (design) in (select substrate, finish and direction) complete with Zfix concealed fixing system.

Sample specification: Styllus® Illusion Aquarius in White Gloss thermolaminate portrait complete with Zfix concealed fixing system.



See the Styllus Illusion 'Sheet Size Info' for a list of colours and available patterns.