

# THE MESSENGER



WESTLAKE UNITED METHODIST CHURCH

*To live so that others will become disciples of Jesus Christ for the transformation of the world*



## Pastoral Reflections

### “AFRICA UNIVERSITY — MAKING A DIFFERENCE EVERY DAY IN AFRICA”

It is hard to believe that the summer is almost over and school has begun. Traditionally, the new church school year begins with Rally Day which will be held this year on September 11. Mrs. Carol Ryan and the Christian Education Team have an exciting day planned. Rally Day is always a special time in the life of Westlake UMC. This year it will be made even more special as Professor Munashe Furusa will be joining us for all of our worship services on September 11. Dr. Furusa has served as the Vice Chancellor of Africa University in Mutare, Zimbabwe since 2014. Prior to that he served in various senior leadership roles at California State University Dominguez Hills.

The history of Africa University is a powerful example of the people called Methodists working together throughout our connection to transform the world. In the 1980s as United Methodism grew in Africa, a call went out to the church worldwide to invest in higher education on that continent. The United Methodist Church in Zimbabwe donated over 1500 acres of land in 1987 to become the site of Africa University, and in early 1992 the university charter was issued. For the 2014-2015 academic year, Africa University had over 1,400 students enrolled from twenty-three African countries. For this

same time period, the university student body was comprised of 53.5% female students. Africa University offers both undergraduate and graduate programs in a wide range of majors.

One of the reasons I am United Methodist is our connectional system. We are all part of something much larger than any one person or congregation. When individually, and as a congregation, we support Africa University with our prayers and our financial resources we are changing lives thousands of miles away.

We are busy preparing for the start of school and Rally Day here in Northeast Ohio. In the midst of our busyness, I ask that you keep Dr. Munashe Furusa, the faculty, and the students of Africa University in prayer. It is also my hope that Westlake UMC will generously financially support the great work done at Africa University through a special offering on September 11. On this significant day, let us shine the light of Christ throughout the world and bring hope to many through our support of education. May we all stay faithful to our charge to transform this world.

Grace and Peace,

*Paster Mellie*

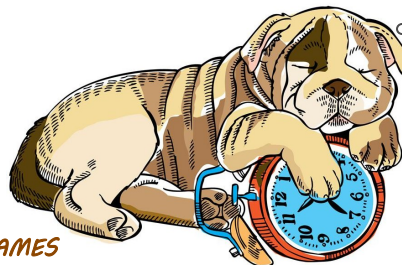
“About Africa University,” accessed August 16, 2016, <http://www.africau.edu/history.html>.

<sup>2</sup>AU at a Glance: 2014-2015 (Africa University Development Office, 2014).

## RALLY SUNDAY — September 11th

*K-12 meet in Fellowship Hall  
@ 9:50 a.m. so we can  
all go to Worship together!*

*PLAN TO HAVE FUN WITH OUR  
ANNUAL YOUTH-LED RALLY DAY GAMES  
(SO WEAR COMFY SHOES!... AND A  
CLEVELAND SHIRT OF ANY KIND)*



*I Will Wait!*

*\*More info about Rally Sunday,  
events for children and youth, and volunteer  
opportunities for Christian Ed look on page 6.\**

WESTLAKE UNITED METHODIST CHURCH

27650 Center Ridge Road \* Westlake, Ohio 44145 \* (440) 871-3088 \* [westlakeumc.org](http://westlakeumc.org)  
Sunday Worship at 8:15, 10:00 and 11:28 a.m.





**SUNDAY, SEPTEMBER 11, 2016**  
**WESTLAKE UNITED METHODIST CHURCH**  
**WELCOMES**

**Professor Munashe Furusa**  
**Vice Chancellor/President & CEO**



**AFRICA**  
**UNIVERSITY**  
*A United Methodist-Related Institution*

Professor Munashe Furusa, a Zimbabwean, took over leadership of the university in July 2014 and has made fiscal accountability, the enhancement of the quality of life of students, and support for academics, his top priorities over the past two years. Prof. Furusa is a first generation college graduate and the first in his family to earn a master's and a doctoral degree. His humble background drives his passion for providing an accessible and transformative educational experience to underprivileged individuals—including adult, returning and non-traditional students.

**Changing Africa: Learning Here. Living Here. Leading Here. | Serving God. All the time. Everywhere.**



# WESTLAKE UMC NEWS & UPDATES

## Africa University's Vice-Chancellor, Dr. Munashe Furusa



**On Rally Day, September 11th**, Professor Munashe Furusa, Vice Chancellor/President and CEO of Africa University will be our morning preacher. Africa University is a United Methodist-related institution in Zimbabwe.

Professor Munashe Furusa, a Zimbabwean, took over leadership of the University in July 2014 and has made fiscal accountability, the enhancement of the quality of life for students, and support for academics, his top pri-

orities over the past two years.

Prof. Furusa is a first generation college graduate, and the first in his family to earn a Master's and a Doctoral degree. His humble background drives his passion for providing an accessible and transformative educational experience to underprivileged individuals including adult, returning, and non-traditional students.

We hope you can be here to help us welcome Prof. Furusa and hear his inspiring message.

## Save the Date for TRUNK-OF-TREAT

**SUNDAY, OCTOBER 23RD, 4—6 P.M.**



Once again WUMC will be inviting the community to experience trick or treating through our church parking lot, as well as seeing the joy our church family has in being together while following Jesus. Last year we had 400 people here! Please think about how you can support this outreach ministry. Here are some ideas: 📎 Donate CANDY! 📎 Decorate your car's trunk! 📎 Serve as an onsite host! 📎 Join the planning team! — **We will meet on Tuesday, September 13th at 7:00 p.m.** For more details, please email Ellie Peiffer at [epeiffer@westlakeumc.org](mailto:epeiffer@westlakeumc.org).

## New Directories Coming!

Please help us keep the church records up to date by checking your information in one of the draft copies of the **Church Family Picture Directory** and in the **Contact Directory** available in the lobby beginning **September 4th**.

If you are missing from the picture directory please email a digital picture to the church office at [westlakeumc@westlakeumc.org](mailto:westlakeumc@westlakeumc.org), or watch for the Sundays our volunteer photographer will be onsite to take your picture. Thanks!

# MUSIC, CHOIR, BELLS, AND MORE!

## Children's Choir

Children's choir is anticipating another action-packed, praise-filled year of joyous music making! Come hear from children's choir veterans what children's choir is all about and receive a nifty surprise at our Information Table in Fellowship Hall on Rally Sunday September 11. **Beginning September 18**, we will have weekly Sunday rehearsals in **Room 104 from 11:30 a.m.—12:00 p.m.** Our fearless leader, Annie Kaschube will be on maternity leave through October 16. The marvelous Lisa Swisher will be leading in her absence. Children in grades K-6 are welcome!



## Bell Choir

Calling all ringers! Bell choir rehearsals will be held once again in the sanctuary on **Thursday evenings from 6:15-7:15**. All are welcome! **We will begin rehearsing on September 8**. Annie Kaschube, Director of Handbells, will be on maternity leave through October 16. Barb Siwik, WUMC member and experienced ringer will be leading the bell choir during her absence. Feel free to contact Annie at [annie.kaschube@gmail.com](mailto:annie.kaschube@gmail.com) or 440-223-9995 or Barb at [blsiwik@wowway.com](mailto:blsiwik@wowway.com) or 440-871-0269. We'd love to have you join this group! (No rehearsal on September 15. Barb will be out of town.)

## Calling All Singers!

Our first adult choir rehearsal is **Thursday, September 1st at 7:30 p.m.** All interested in singing with the choir are welcome! Come to meet our new choir director, Joshua Konow and get ready to lift your voice in song and praise! Questions? Please email [jkonow@westlakeumc.org](mailto:jkonow@westlakeumc.org)

# SPIRITUAL GROWTH & SMALL GROUPS

## Fall Bible Study

THURSDAYS, BEGINNING

SEPTEMBER 15TH AT 9:00 A.M.

SUNDAYS, BEGINNING

SEPTEMBER 25TH AT 5:00 P.M.

All are welcome to explore the **Acts of the Apostles** in this multi-week study based on the Efir Bible Study Series. It will run throughout the fall. Gather in Room 205 on Thursdays, and Room 100 on Sundays.



## United Methodist Women

General Meeting: Potluck!

THURSDAY, SEPTEMBER 8<sup>TH</sup> AT 10:30 A.M.

Women of our church, you are all "ALL" welcome to this friendly group! Start this new season by enjoying our monthly programs and making new friends. The business meeting begins at 10:30 a.m. and lunch is at 12:00noon. Usually we bring a sandwich, but this September we are having a lunch potluck. Please bring a dish to pass — a main dish, salad, or dessert.



The program at 1:00 p.m. will be "**Music Through the Years**" presented by Betsy Roth, vocalist, and Joe Schaffer, pianist. What an enjoyable afternoon it will be!



## Moving On As Kids Move Out!

SUNDAYS STARTING

SEPTEMBER 18<sup>TH</sup> AT 5:00 P.M.

Coming this Fall is a new faith based discussion group focused on preparing parents to send their teens into the real world and helping to process their own mixed emotions about this big life transition. Whether you are feeling giddy or more like grieving, this is a group that understands what you are going through and can help you discover tools for answering what's next in your life. The group will meet on **Sunday nights at 5:00 p.m.** starting **September 18<sup>th</sup>** and run for **5 weeks** (ending on October 17th). For more information about the group please contact either Joyce Stenger at [jmkstenger@hotmail.com](mailto:jmkstenger@hotmail.com) or Lisa Swisher at [lswisher88@wowway.com](mailto:lswisher88@wowway.com).



## Save the Date:

UMW Fall Luncheon

THURSDAY, OCTOBER 27<sup>TH</sup>  
AT 12 NOON

Ladies and gentlemen, please look forward to and save this date for the annual United Methodist Women's Fall Luncheon. This delicious luncheon is an important mission of WUMW. The wonderful violinist, Mary Beth Ions, will be entertaining us. Tickets will be on sale shortly. For information, please call Shirley Peritch at (440) 934-4542.

## ChristCare Groups Begin Small Group Gatherings

Do you feel God nudging you to be involved in a new way? Please talk to Pastor Mollie, Ellie Peiffer, or Don Lefelar if a small group for service, fellowship, and spiritual growth may be right for you. Below is a small sampling of the groups that are beginning new resources and have a spot for you.

- ◆ **Half Truths on Mondays at 12:30 p.m.**  
beginning **September 19th**  
*God Helps Those Who Help Themselves & Other Things the Bible Doesn't Say* — Women's group with childcare is provided; Contact Ellie Peiffer
- ◆ **Jesus Wants to Save Christians by Rob Bell**  
**Saturdays at 6:30pm** beginning **September 10th**  
This is a couples group; Contact Leslie & Jim Kubancik
- ◆ **Mondays at 7:00 p.m.** beginning **September 19th**  
Contact Gary & Jayne Linch for details
- ◆ **First Corinthians Women's Bible Study**  
**on Wednesdays at 7:00 p.m.** beginning **September 28th**  
*Living Love When We Disagree* — Women's group; Contact Gretty Myers
- ◆ **Gospel Medicine on Thursdays at 7:00 p.m.**  
beginning **September 29th**  
Contact Don Lefelar for details



## Purl Girls — Calling all knitters!

RESUME SEPTEMBER 7TH 11:30 A.M. TO 1:30 P.M.

Purl Girls Knitting Group will begin September 7th. We meet every Wednesday from 11:30 a.m. to 1:30 p.m. in Room 100. We are looking for knitters to join us as we have given away quite a number of prayer shawls, and those receiving them are always so thankful! Betty Levis can give you more information if you are interested — (440) 871-8644.

# MISSION OPPORTUNITIES & UPDATES

**A BIG THANK YOU!** ...to everyone who donated backpacks for Simpson UMC's children. We had over 40 backpacks given out at the end of their VBS to prepare them for the new school year.

### WSCH MONTHLY COMMUNITY MEAL



WUMC will continue to provide a **monthly meal to Westside Community House** on the third Tuesday of the month for their parenting class starting in September. There will be a sign-up on the Mission bulletin board for groups or individuals to provide the food each month. We would like to have a couple people from the group help at WSCH to serve the food, there will always be someone from WUMC who "knows the ropes" to serve with you every month. We serve approximately 50 people. Menu suggestions are available. Contact Judy Massey or Suzanne Lamb to volunteer, get menu suggestions, or with any questions.



### TWICE BLESSED FREE STORE

We will be serving at the Twice Blessed Free Store at Nehemiah for our monthly mission opportunity on **Saturday, September 17th**. We will meet at WUMC to carpool at 8:30 a.m., or meet at Nehemiah, 6515 Bridge Ave. at 9:00 and stay until 1:00. Sign-up on the bulletin board or via our website [HERE](#).

**Volunteers also needed any Monday** to help sort and restock, hours 10:00 a.m. -1:00 p.m. at the Twice Blessed Store.

**Donations:** Clothing, toiletries, and small household goods are needed, especially children's clothes. Items **MUST** be in season as they don't have storage room. Place donations in the wooden box in Fellowship Hall.

## Are you looking for a mission project to do, or for your Christ Care group?



We will be collecting **UMCOR Cleaning Buckets** to help with the areas that are dealing with recent floods. There are flyers with the exact items\* that need to be in each bucket on the bulletin board. You can collect and donate complete kits, or the individual items. We will be collecting them on **Sunday, October 16**. \*The items must be the EXACT items listed to ensure they can be packed and shipped. Contact Kay Martin with questions.

### DO YOU HAVE A HEART FOR MISSION,

want to help others in their mission journey, or just curious about what you can do? There is a great opportunity for learning more. The WUMC Mission team is looking for someone, or two, who can attend a 4-hour event to help WUMC expand their mission work. For info or to volunteer, email Kay Martin: [kcbrightm@aol.com](mailto:kcbrightm@aol.com)



### THE LOCAL MISSION EXPERIENCE



Enjoy fellowship and conversation as you learn about organizing the local mission experience. Hear from Eleanor Dixon-Wade, director of All God's Children. No charge for event, registration is requested for planning purposes. **September 24th, 10:00 a.m.—2:00 p.m.** at Johnsville Grace UMC 7459 Co Rd #242 Shauck, OH 43349 (~ 1.5 hr drive).

**DON'T FORGET TO CHECK THE LOBBY BULLETIN BOARD FOR MORE OPPORTUNITIES TO VOLUNTEER IN MISSION!**

# COMPASSION & CONGREGATIONAL CARE

## Caregivers Support Group

**MONDAY, SEPTEMBER 19TH\*,  
7:00—8:00 P.M.**



*Perhaps you are caring for a loved one. Your role as a caregiver is incredibly important and one that demands much of you. You are not alone.*

WUMC, in conjunction with Rockport UMC, holds **monthly meetings on the first\* Monday of the month at Westlake UMC** (\*Due to Labor Day, we will convene the third Monday for September). Caregivers are welcome to bring their care partner. A separate space and activities are available for them, staffed by volunteers. The group is facilitated by Thurston Cosner, Stephen Leader from Rockport UMC, and Gretty Myers, Stephen Leader from Westlake, UMC. Also joining us is Kathy Tafuri, Parish Nurse from Westlake UMC. Please contact Gretty Myers to participate or to volunteer at (216) 701-2067 or [grettymyers@sbcglobal.net](mailto:grettymyers@sbcglobal.net).



## Stephen Ministry

Here is what people are saying about serving as a Stephen Minister.....

**“I’m more in tune with people’s needs.”**

**“I always do my best to listen, care, and model the love of Jesus.”**

**“I’ve been a Stephen Minister for nearly 10 years and can truly say it becomes a part of your life.”**

**“It’s such a blessing to see God working through me to change lives.”**

**“Stephen Ministry has given me a way to serve God more faithfully by being his presence to those in need. In the process God has blessed me with skills I didn’t know I had and enriched my life in more ways than I could ever imagine.”**

Stephen Ministers come from all walks of life. Their commonality? A passion for bringing Christ’s love and care to people during a time of need.

If you would like to know more about Stephen Ministry please contact Gretty Myers, Stephen Ministry Coordinator, at [grettymyers@sbcglobal.net](mailto:grettymyers@sbcglobal.net) or (216) 701-2067. Applications to be trained as a Stephen Minister are still available in the church lobby (through the end of the summer).

## Prayer Beads



God calls each one of us into a relationship with him through prayer. Christian (Anglican) prayer beads are a tactile aid to prayer as a way to connect with God. The beads become a way to deepen your prayer life by encouraging not only the mind but the body to participate in prayer. The prayers keep the mind focused and the passing of beads through the fingers keeps the body engaged in prayer.

Christian prayer beads have a great deal of symbolism woven into the design and give some structure to praying. Sets of prayer beads are available at no cost for you and others who need to be reminded that God is with us.

Stephen Ministers are available every Sunday morning in Room 203 from 9:00-9:30 and again 11:00-11:30 to help you understand the impact prayer beads can have in your prayer life. Please stop by on Sunday morning for your own set of prayer beads or a set for someone else and a brief explanation of how to use them.

We are able to make these prayer beads available with a generous donation of beads from Eleanore Lehto, hand-made crosses from Alex Combs, and the creative hands of Linda Eads and Mary Saffles.

**Questions?** Please contact Gretty Myers at [grettymyers@sbcglobal.net](mailto:grettymyers@sbcglobal.net)

**“Rejoice always, pray without ceasing, give thanks in all circumstances; for this is the will of God in Christ Jesus for you.” ~1 THESSALONIANS 5: 16-17**



## Individual Prayer Time & Communion

**WITH PRAYER PARTNERS**

**SUNDAYS 9—9:30 A.M. OR  
11—11:30 A.M.**

Stephen Ministers are available **every Sunday morning** in Room 203 from 9:00 – 9:30 and also 11:00-11:30 to offer a quiet, reflective time for individual prayer and communion. We also have sets of prayer beads available for you during this time. *All are welcome.*



# CHRISTIAN ED & FAMILY EVENTS



## From the Desk of Christian Ed

Mrs. Carol Ryan — [cryan@westlakeumc.org](mailto:cryan@westlakeumc.org)

Unveiling our 2016-17 Theme:

### WAIT FOR THE LORD!

*Wait for the LORD; Be strong, and let your heart take courage; Yes, wait for the LORD. ~ PSALM 27:14*

Why? ... **WAIT!**

Why me? Why is this happening to me? Why didn't I get what I want? ... **WAIT!**

Will I make it through this? Why is what I want being withheld from me? ... **WAIT. WAIT FOR THE LORD!**

We say God is good, all the time. But in moments of despair, do we question God is working all things together for good? We see the path leading into the trials of life. Do we maintain faith in His goodness, and that He can and will lead us through? And yes, when you have 4 or 8 or 12 years of life experience a hamster dying, a friend moving, or a "no, you can't go" counts as a moment of despair.

Ok. Sounds crazy heavy for a theme for children and youth, right?! Let's work backwards. We want to build children's dependence on God. We want to foster this relationship through their active prayers. We want to, and we will, say that God answers all prayers.

What happens if we stop there? What happens when you pray for a puppy, an invitation to the birthday party at SkyZone, a cure for grandpa, or reconciliation between your parents, and you feel your prayer isn't answered? Heck, we are adults and it still can be a struggle. To quote my favorite biblical scholar of all time, my mom, "God answers all prayers. We may not like the answer, or understand His answer, and He isn't tied to our deadline for an answer. But He is always with us, and He answers all prayers."

This doesn't mean we do nothing. We pray, we worship, we accept His grace, and we find strength not in **our** hands or **our** eyes but in **Him** who we trust. We wait, we trust, we hope, and we wait.

We will be talking, learning, studying, and playing around with praying to God all year. We hope families build,

expand, and/or develop some prayer traditions at home. Whether you start with saying grace, bedtime prayers, prayers of Thanksgiving, prayer of Jabez, or just chatting it up, at, and to God, it all helps children learn that you value an open relationship with God. Little slips by our children. We profess to love Him. They need us to open up and show how we talk to Him. And sometimes, we need their presence to remind us that prayer can be simple, quiet, and unscripted. **WAIT FOR THE LORD!**

**WAIT FOR THE LORD!** Our trials both make us stronger, and lead us to accept His strength and His wisdom.

**WAIT FOR THE LORD!** Let your heart take courage because God is Good, all the time.

Yes. **WAIT FOR THE LORD!**

### RALLY SUNDAY

On Sunday, September 11<sup>th</sup>, we kick-off an exciting new season of fun, learning, and relationship building within our Sunday school program! K-5<sup>th</sup> will join us for Annual Youth Hosted Games during Sunday school. 6th-12th will be hosting games. Planners and preparation crew information is provided by Rachael Haning. **What to WEAR?** Remember, we treat Rally Sunday like a field day. **Closed-toed shoes**, and comfortable clothing. We encourage EVERYONE to get their 216 on with their **CLE spirit wear!** Ok, our theme is not Lamentations 3:25, and that doesn't actually end with for those who wait for a championship. But we are ALL IN for Christ, and He is here in the CLE! The following Sunday, traditional Sunday school programs will convene.

### REGISTRATION

EVERYONE with a baby, child, and/or teen must complete the following registration this year! Registration supports us in making first day name tags, picture boards, mailings, and ok got us, policy required (or the sky literally will fall) if we do not annually collect data base of emergency information. Help us. Register now. Click [HERE](#) or via the website. PC challenged or need help, please contact Carol Ryan via the office or [cryan@westlakeumc.org](mailto:cryan@westlakeumc.org).

**Confirmation registration:** All youth in Grade 8 and older, who have not previously been confirmed, are invited to enroll in our 2016-17 class. Please use this link to enroll for confirmation which meets Sundays starting October 2<sup>nd</sup> from 10:00 – 11:00 AM. Click [HERE](#) of via the website.

## PROGRAM REMINDERS

**Picking Up Children:** Children from the nursery through 5<sup>th</sup> grade must be signed-out from their class. Tweens in our middle school class whose parents wish them to be dismissed without a sign-out need to email [cryan@westlakeumc.org](mailto:cryan@westlakeumc.org) to consent to release. Confirmation class and above are dismissed without parental sign-out. Nursery through our kinder/firstie class dismiss immediately following worship. Please allow our 2<sup>nd</sup> graders – middle schoolers to finish class at 11:10 prior to collecting them.

### Class Locations/Lead Teacher(s)

Pre-school: Miss Jillian S.

Kinder/Firsties: Rm 102/Miss Rachel K. & Miss Kaela R.

2<sup>nd</sup>-3<sup>rd</sup> Grade: Rm 105/Ms. Sue Geringer

4<sup>th</sup>-5<sup>th</sup> Grade: Rm 107/Mrs. Janet Hanacek

6<sup>th</sup>-7<sup>th</sup> Grade: Rm 100/Ms. Bobbi Kibbey

Confirmation: Rm 205/Rachael Haning

Young Adult (HS – 20 years old): Rm 205/Rachael Haning

11:28 Multi-age Class: Rm 107/Mrs. Ryan

**Young Adult Sunday School, aka The Discussion 'n Donuts Seminar Course,** continues to meet in Room 205, each Sunday at 9:00 a.m. High School Freshmen – 20 year olds will continue to select different topics for discussion. Come for the fellowship. Grab a breakfast treat. Share and listen to find ways to connect the Bible to 2016 life.

**Class Specific Information:** Additional class specific information is emailed to parents/guardians via distribution lists generated from your registration to WUMC Children and Youth programs!

**Parental Expectation:** We expect a parent/guardian of children in our care to remain on church property during our morning programs. This includes during Children's Choir rehearsals. When this is not possible, we expect another "on property adult" (and your child) knows they are assuming this responsibility.

### Live Streaming of 10:00 AM Worship Service:

As many know, WUMC's 10:00 a.m. worship service is streamed on the internet. Children joining Pastor Mollie around the prayer rail, or performing with the Children's Choir will be marginally visible. If a family wishes to avoid live streaming, please sit in the middle to back of sanctuary.

**First Pew Program:** WUMC Nursery staff provides "first pew" care. Children in Kinder – 5<sup>th</sup> grade with a parent who is volunteering in the life of the church (choir, hospitality, teaching, etc.) can be dropped off at

the first pew (organ side of sanctuary) at 9:50 a.m. Let our staff keep your child(ren) safe for the start of the worship service and ensure their transition to Sunday school following the "Time with Children."

**Christmas Eve:** *What?* Yes, already! We select readers early, and want to increase our participants in our pageant style gathering at the 5:00 p.m. Christmas Eve service. If there is an interested sheep, angel, reader, or shepherd in your stable, please let Mrs. Ryan know!

**Mini-Missions:** Help us, help you, help us, to help others... In other words, take a look month-by-month at some collections classes will be running this year.

**October:** *Gently used coats, and winter gear (you know all the "stuff" you thought would still fit them)*

**November:** *Toothbrushes and toothpaste*

**December:** *New packages of underwear, and diapers*

**January:** *College and military care package goods*

**February:** *Support the Annual Valentine's Day Bake-Sale!*

**March:** *Volunteers, yes we are collecting them, to help our month of hospitality*

**April:** *Baby wipes, soap, and/or deodorant*

**May:** *Spring Clean It Collection: Find 5 Household Items for Donation*

**5<sup>th</sup> Sunday Is Worship Sunday:** Following the lead of other United Methodist Churches, we will make our 5<sup>th</sup> Sundays of a month our Worship Sundays. It is our hope that our children can enrich their understanding of worship, and church community, by participating as families in our worship services. There is a "fifth" Sunday on October 30, January 29, and April 30. Sunday school programs will pause on these dates with the exception of our nursery – preschool rooms.

**S.P.I.C.E Program:** Special People in Christian Education focuses on welcoming children and teens with special needs. For more information, or to volunteer to support this program, please contact Mrs. Carol Ryan via [cryan@westlakeumc.org](mailto:cryan@westlakeumc.org) or via the church office.

## VOLUNTEERS and DONATIONS

Looking for a rewarding service or **volunteer** opportunity, please contact Mrs. Carol Ryan. There are ways to serve in the classroom with children, or from home. We are seeking to increase our "bench" of adults to serve as helper/extra hands in preschool, as well as substitute teachers at multiple grade levels. Did you know, the majority of our lead teachers are not parents to children in their class? See what you are missing, if you enjoy being in fellowship with children and/or tweens! Or

(CONT'D P.8 →)



**(CHRISTIAN ED CONT'D FROM P. 7)**

you are interested in exploring volunteer opportunities with our vibrant youth program (from chaperoning to driving to donating a Sunday night meal for youth group), please contact Rachael Haning.

**DONATION REQUESTS**

- September:** Clean toilet paper tubes, and clean/smooth soup cans
- October:** Glass baby food jars
- November:** Clean (and we mean washed CLEAN) gallon milk jugs
- December:** Mason jars
- January:** Wine bottles (and again, clean and empty)
- February:** Shoe boxes
- March:** More toilet paper tubes, cardboard pieces, recyclable "stuff" with "egg drop" potential

Donations can be left in the Christian Ed/WUMC supply space in Room 101.

**UPCOMING EVENTS**

Registered families will receive more detail about these events, or contact Mrs. Carol Ryan.

- Sept. 11<sup>th</sup> Rally Sunday!
- Sept. 25<sup>th</sup> 10:15 a.m. Acolytes: An Introduction  
4:00 p.m. Confirmation Class: Parent and Youth Expectations Meeting
- Oct. 2<sup>nd</sup> Children's Choir sings  
Confirmation Class Begins
- Oct. 9<sup>th</sup> Bible 101 (4<sup>th</sup>-5<sup>th</sup> Grades)
- Oct. 23<sup>rd</sup> Presentation of Bibles to 4<sup>th</sup> Graders (and not previously presented to 5<sup>th</sup> graders)
- Oct. 30<sup>th</sup> 5<sup>th</sup> Sunday is Worship Sunday (no classes for grade schoolers)
- Nov. 13<sup>th</sup> Moses Movie Night following SpudNight
- Nov. 20<sup>th</sup> Hanging of the Green & Jingle(gobble)Fest

**Register for Sunday School** Children & Youth: [HERE](#)  
Confirmands: [HERE](#)

**ATTENTION YOUTH!**

**... Have you heard?**



**High School Sunday School** is up and running from 9 to 10 a.m. in Room 205. If you are in 9th grade through 20 years old, please join us for donuts and discussion!

**September 11th:** Run Rally Day Games/First Youth Group Meeting 5-8 \*\*Youth Council Voting\*\*

**September 17th -- Point Fest** for 6th—12th grade  
Cost: \$63.00 (Day pass to Cedar Point & Festival Admission!) — \$30 for Season Pass Holders  
10+ People? Price drops to \$43! Youth Group will rebate \$20/per person if group of 10+ signs up!

**Invite a friend!!** Bring a sack lunch and \$ for dinner. Leave church @ 10AM (Stop to eat lunch along the way). Arrive back in Westlake around midnight (we will call when we leave the park). We'll need drivers/chaperones, please.

**September 18th --** (catch some zzz's from Saturday!) NO Sunday School  
Regular Youth Group 5-8 p.m. Youth Council for 2016 will be announced. Youth Council will meet AFTER Youth Group to plan the Lock-In

**September 25th --** Regular Youth Group 5—8 p.m.

**COMING UP...**

**October 1-2 (Saturday to Sunday)** Fall Lock - In Time TBA. Looking for chaperones!

**October 23rd --** Trunk or Treat (No Youth Group)

**November 6th --** Regular Youth 5—8 p.m.

**November 13th --** Spud Night

**November 20th --** Hanging of the Greens

**QUESTIONS?** Contact Rachael Haning, WUMC Youth Coordinator at [youth@westlakeumc.org](mailto:youth@westlakeumc.org)

# CHURCH FAMILY FOCUS NEWS

## Life Events



### BAPTISM

**Emma Ruth Hilston**, daughter of Cyndi and Erik Hilston, and little sister of Luke and Josh Hilston was baptized by July 10th. Her godparents are Roseann Fekete and Paul Hilston.



### BIRTHS

**William James Royce** was born to parents Bridget and Anthony Royce on July 27th.



### WITH SYMPATHY

**Margaret Aldrich**, longtime member of Westlake UMC, passed away July 5th. A memorial service officiated by Rev. Mollie Brown was held at Westlake UMC on July 8th.

**Essie Cervenka**, mother of Patti Barnes, passed away August 7th.

**Ann Van Dyke**, mother of Duane Van Dyke, passed away in July.

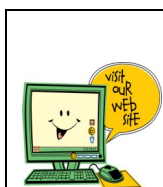
## THANK YOU

### **Dear Members of Westlake UMC,**

I want to thank you on behalf of my niece Kaylin Herrick, her son Cayden and myself especially for your prayers. They mean so much to all of us! Thank you also for the meals which many of you have made on Kaylin's clinic days. These days are so exhausting due to the many medical tests and doctor exams Kaylin undergoes. It is so wonderful to return in the late afternoon and to be blessed with the gift of a prepared meal.

Your kindness and prayers are so much appreciated!  
God bless,

Ann Johnson (Kaylin's Aunt)  
Kaylin & Cayden Herrick



For more details about events and to view the church calendar, please visit our website at [westlakeumc.org](http://westlakeumc.org)



## Got Medicare?

by Patricia Whited-Stineman, MSIG, CSA  
OSHIIP Medicare Counselor (440) 781-1383

**Ohio's Medicaid Policy changed significantly on August 1st. It seems appropriate to devote this month's article to reviewing some of the changes.**

August 1<sup>st</sup>, Ohio became a 1634 policy state, having a single disability determination System. This policy change simplified the process between the federal and state level, all SSI beneficiaries will no longer need to apply separately for SSI and Medicaid benefits. A person qualifying for federal SSI, will be automatically enrolled in Ohio's Medicaid.

The Medicaid eligibility income cap raised to 75% (\$733), from 64% of the FPL and the opportunity to "spend down" to Medicaid went away.

The Good News for beneficiaries that met their spend down at least one time during the period August, 2015 thru July, 2016... will have Open Medicaid coverage until their 2017 Redetermination.

**Concerns??** Yes for the Aged, Blind and Disabled (ABD) Medicare beneficiary with a limited income level of \$1,010—\$1,357 who used Spend Down to supplement their Medicare, they have been dealt a financial challenge: How to cover their Medicare deductibles and 20% coinsurance? 1) Remain on Original Medicare and self-pay, 2) Choose a Medicare Advantage plan; or 3) Remain on Original Medicare and apply to charitable programs for assistance.

Another significant change for Individuals receiving LTC Medicaid at home or in community based settings is income eligibility. Beneficiaries with income that exceeds \$2,199 a month will now be required to set up a Qualified income Trust with the State of Ohio as the beneficiary.

This information is not comprehensive and the changes to Medicaid are significant! There will be confusion for sometime while the system transitions beneficiaries into the system and the users and providers of services learn the new program. The services of an Elder law Attorney can help navigate the process.

### **2016 MEDICARE Annual Open Enrollment Period is October 15<sup>th</sup>-December 7<sup>th</sup>**

Do you have a Medicare Advantage or Part D plan? Review your healthcare needs. Compare Plan options for Coverage, Cost, and Convenience.



## Altar Flowers



*Can you help beautify the altar on Sundays while honoring or remembering a loved one?* If you would like to donate flowers for the altar on Sundays, there is a sign-up sheet located next to the large bulletin board in the lobby—or contact the office. Please bring a check for \$35 made out to the church with “altar flowers” on the memo line, or cash in an envelope with specified date, at least one week prior to the floral arrangement being displayed. Thank you!

# FINANCIAL INFORMATION

**Would you like to contribute to the church but do not carry a checkbook or cash with you on Sunday? We can help! There are two options available by which you can make contributions to the General Operating Fund for Westlake UMC:**

**\$ DIRECT DEPOSIT:** Scheduled automatic transfers from your checking account to the WUMC account. Please contact Sharon Parks, Finance Manager for the form needed at [sparks@westlakeumc.org](mailto:sparks@westlakeumc.org)

**\$ ONLINE GIVING:** Use your credit card via our website at [westlakeumc.org](http://westlakeumc.org). In the lower left corner of the home page you will see a button for Online Giving (near "Live Streaming"— You do not have to login to contribute, but can create profile if desired). This can be a one-time contribution or regularly scheduled contributions.

## Income Statement— July 2016

	July 2016	YTD 2016	2015	YTD 2015	YTD Budget	Annual Budget 2016
<b>INCOME</b>						
CONTRIBUTION INCOME	\$43,793.82	\$310,358.62	\$31,160.67	\$287,616.12	\$329,413.68	\$570,000.00
<b>TOTAL INCOME</b>	<b>\$43,793.82</b>	<b>\$310,358.62</b>	<b>\$31,160.67</b>	<b>\$287,616.12</b>	<b>\$329,413.68</b>	<b>\$570,000.00</b>
<b>EXPENSES</b>						
<b>ADMINISTRATIVE EXP.</b>						
STAFF PARISH EXP.	\$26,546.22	\$194,084.07	\$24,831.48	\$185,451.08	\$207,458.12	\$355,634.00
OFFICE EXP.	1,728.12	14,214.05	461.19	13,720.39	13,310.34	22,583.40
FINANCE TEAM EXP.	96.15	1,390.30	118.95	1,116.57	1,213.31	1,880.00
FACILITIES EXP.	5,091.36	36,262.88	4,014.75	44,689.74	49,806.35	83,546.60
Subtotal Expenses	33,461.85	245,951.30	29,426.37	244,977.78	271,788.12	463,644.00
<b>MINISTRY EXPENSE</b>						
MUSIC EXP.	0.00	711.33	11.00	833.10	2,400.00	4,250.00
WORSHIP EXP.	493.25	3,733.30	408.50	4,749.73	4,817.50	8,375.00
EDUCATION EXP.	182.83	6,411.69	376.04	8,728.31	11,500.00	18,090.00
OUTREACH EXP.	1,024.62	4,540.70	120.03	2,078.87	3,725.00	8,065.00
MISSION EXP.	6,028.09	48,724.69	5,432.09	43,743.05	39,419.24	67,576.00
Subtotal Ministry Expense	7,728.79	64,121.71	6,347.66	60,133.06	61,861.74	106,356.00
<b>TOTAL EXPENSES</b>	<b>41,190.64</b>	<b>310,073.01</b>	<b>35,774.03</b>	<b>305,110.84</b>	<b>333,649.86</b>	<b>570,000.00</b>
<b>EXCESS INCOME/EXPENSES</b>	<b>\$ 2,603.18</b>	<b>\$ 285.61</b>	<b>-\$ 4,613.36</b>	<b>-\$ 17,494.72</b>	<b>-\$ 4,236.18</b>	<b>\$0.00</b>

# MORE WUMC NEWS

## Coffee Hour Sponsorship

### COFFEE SPONSORS

#### SEPTEMBER 2

Mary & Tom Brown

#### SEPTEMBER 11

Ron & Sharon Rennard

*In celebration of our veterans*

#### SEPTEMBER 18

Roseann Fekete

*In celebration of Christ-Care Groups starting in September*

#### SEPTEMBER 25

Shelley Marsh



Sponsorships are available for our weekly coffee hours following Worship on Sundays. If you would be interested in sponsoring coffee hour, please submit an envelope with the sponsorship amount included (\$35 per Sunday) at the office prior to the week of the sponsorship or in the collection basket. Checks made payable to WUMC. **You can find Sponsorship forms on the table near the coffee at Fellowship Hour and in the lobby—or to the right of this article.**



## Nursery Staff Position Open

Westlake UMC seeks to add nursery assistants for both infant care and 2-3 year old care teams. Schedule includes 3-4 hrs on 3 Sunday mornings per month. Additional hours available for holidays, special events, and meetings. Competitive hourly compensation.

Staff will provide safe care for children; support Westlake UMC's mission through the Nursery Ministry; maintain a welcoming environment for children; build rapport with families, volunteers & staff; work as a team member; CPR certified in children/infants (or willing to get certification); complete background check and Child Protection Policy application; stand and walk for extended periods, lift children, and sit on the floor.

**Applications being accepted now.** Applications available [HERE](#). Please email completed application to church office at [westlakeumc@westlakeumc.org](mailto:westlakeumc@westlakeumc.org) or drop off at church office M-F, 9 a.m. to 4 p.m.

WE ARE LOOKING FOR SPONSORS FOR COFFEE HOURS FOR OCTOBER THROUGH MAY. PLEASE FILL OUT THE FORM BELOW AND DROP AT THE OFFICE OR IN THE OFFERING PLATE ON SUNDAY WITH YOUR SPONSORSHIP DONATION.

## 2016-17 COFFEE FELLOWSHIP SPONSORSHIP



**\$35.00 WILL SPONSOR A SUNDAY COFFEE FELLOWSHIP TIME\*!**

Encourage fellowship!

Welcome the WUMC Church family by funding a Sunday Coffee Fellowship Time.

*You don't have to do anything!* All work will be done by the Hospitality Team.

Enjoy fellowship with your church family!

*\*Fellowship Time encompasses the entirety of Sunday morning, with coffee and pastries available for all Worship participants.*

Unless you request a specific date, we will assign a Sunday that is open on the calendar. Your name will be displayed on table signage and listing in the weekly bulletin.

Name: \_\_\_\_\_  
*(sponsoring individual, family or group)*

Requested date? (opt.) \_\_\_\_\_

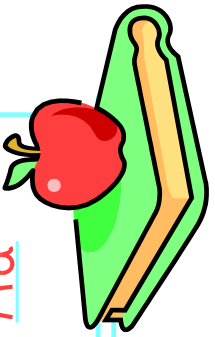
In celebration or remembrance?  Yes  No

\_\_\_\_\_

**\*\*Please leave this form and payment in the collection basket or at the church office\*\***

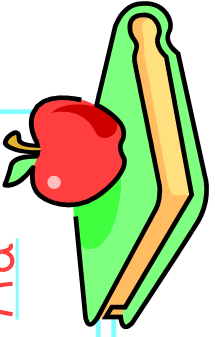


Aa



# September 2016

Aa




Sun	Mon	Tue	Wed	Thu	Fri	Sat
4	5	6	7	8	9	10
No Youth Group	 <b>Church Office Closed</b>	7:30pm 11:28 Rehearsal	11:30am Purl Girls (100) 1pm Parish Nurse Available 1:30pm Arthritis Exer. (103)	10:30am UMW Gen. Mtg. Potluck! (FH) 5:30pm Marijana Anon(100) 6:15pm Handbell Choir 7pm Trustees (105) 7:30pm Choir Rehearsal	12—6pm Theater Group (FH)	6:30pm ChristCare—JK/LK
11 <b>Rally Day... I Will Wait!</b> 9am Rev. Bill McFadden — Guest Speaker All services, guest preacher: Dr. Furusa from Africa Univ. <b>Youth Group 5-8 p.m.</b>	12 12:30pm Games 'N Such (FH) 7pm Stephen Ministry (107)	13 5:00 pm Oberlin Choristers (FH) 7:00 pm Mission Team (107) 7:00 pm Trunk or Treat Planning Team (205) 7:30pm 11:28 Rehearsal	14 9a-4p Sewing Guild (F. Hall) 9:30am All Staff Mtg (205) 11:30am Purl Girls (100) 1pm Parish Nurse Available 1:30pm Arthritis Exer. (103)	15 9a-4p Sewing Guild (F. Hall) 9am Bible Study (205) 5:30pm Marijana Anon (100) 7:30pm Choir Rehearsal <b>Messenger Deadline</b>	16 12—6pm Theater Group (FH)	17 Oberlin Chorister Retreat 9 am. —3pm. (FH/Sanct/103-4) <b>9:00 am—1:00 pm Twice Blessed Store at Nehemiah Mission</b> <b>Youth to Cedar Point</b>
18 11:30am Children's Choir Starts 5pm "Moving Out/On" Parenting Group (100) <b>No Youth Group</b>	19 12:30pm ChristCare-EP (100) 7pm ChristCare-G/J/L (205) 7pm Caregiver's Support Group (100 & 105) 7pm Finance Cmmtte (105)	20 5:00 pm Oberlin Choristers (FH) 5:00 pm WSCH Comm. Meal 7:30pm 11:28 Rehearsal	21 11:30am Purl Girls (100) 1pm Parish Nurse Available 1:30pm Arthritis Exer. (103)	22 9am Bible Study (205) 10am CWRU (107) 10am UMW Mission Outreach (F. Hall) 5:30pm Marijana Anon (100) 6:15pm Handbell Choir 7:30pm Choir Rehearsal	23 12—6pm Theater Group (FH)	24 6:30pm ChristCare—JK/LK
25 5pm "Moving Out/On" Parenting Group (100) 5pm Bible Study (107) <b>Youth Group 5-8 p.m.</b>	26 12:30pm ChristCare-EP (100) 7pm ChristCare-G/J/L (205)	27 4—9 pm Oberlin Choristers (FH & Sanct. & 100, 103-4)	28 12pm Purl Girls (100) 1pm Parish Nurse Available 1:30pm Arthritis Exer. (103) 2pm ChristCare-JMc (205) <b>5:30pm Community Meal</b> 7pm ChristCare-GM (205) 7:30pm 11:28 Rehearsal	29 9am Bible Study (205) 10am CWRU (107) 5:30pm Marijana Anon (100) 6:15pm Handbell Choir 7pm CC — DL (205) 7:30pm Choir Rehearsal	30 <i>Canon Wedding Rehearsal 4 p.m.</i> 12—6pm Theater Group	

**WESTLAKE UNITED METHODIST CHURCH STAFF**

<b>Rev. Mollie Brown</b>	Senior Pastor: mgbrown@westlakeumc.org
<b>Annie Kaschube</b>	Organist, Director of Children's Choir and Handbell Choir
<b>Carol Ryan</b>	Christian Education Director
<b>Ellie Peiffer</b>	Small Group & Welcoming Ministries
<b>Gretty Myers</b>	Stephen Ministry Coordinator
<b>Jeanne Halaby</b>	Childcare Assistant
<b>Jill Farkas</b>	Custodian
<b>Joshua Konow</b>	Director of Adult Choir
<b>Kathy Tafuri</b>	Volunteer Parish Nurse
<b>Lynne Wolf</b>	Office Assistant
<b>Morgan Lux</b>	Childcare Assistant
<b>Patti Barnes</b>	Nursery Coordinator
<b>Rachael Haning</b>	Youth Coordinator
<b>Rich Gallo</b>	11:28 Worship Leader
<b>Sharon Parks</b>	Finance Manager
<b>Stephanie Fries</b>	Manager of Church Operations

**WUMC Librarians:** Nanci Danburg & Judy McDonald

**OTHER PASTORS CONNECTED TO THIS CONGREGATION:**

Dr. Richard Parks	Rev. Ron Dietrich	
Rev. Don Lefelar	Rev. Bob Remington	
Rev. Diana Guyette	Dr. Richard Lehto	
	Rev. Tom Taylor	



Are you traveling for business?  
Unable to physically get to  
worship on a Sunday,  
but still want to participate?

Now you can join Westlake UMC  
at the 10:00 service with our new

**LIVE STREAMING! \*\***

Connect via our website: westlakeumc.org  
for the 10:00 service. You will see the link  
to the broadcast in the lower left corner  
of the home screen. You are also invited to  
register your attendance and/or make  
contributions online.

*\*\*Please note that due to copyright and licensing  
restrictions, not all music or other multimedia  
presentations may be broadcast.*

**\* MESSENGER ARTICLES FOR OCTOBER: DUE THURSDAY, SEPTEMBER 15TH \***

DATED MATERIAL—DO NOT DELAY  
Mailed August 29, 2016



Sunday Worship at  
8:15 a.m. (Reflective)  
10:00 a.m. (Traditional)  
11:28 a.m. (Contemporary)

westlakeumc@westlakeumc.org  
www.westlakeumc.org  
(440) 871-3088  
Westlake, Ohio 44145  
27650 Center Ridge Road

**WESTLAKE  
UNITED METHODIST  
CHURCH**

RETURN SERVICE REQUESTED