

**KEY FEATURES AND APPLICATION**

The PHS-C probe Aluminum holder may be used (as an option) to position a SENIS Hall probe in an environment with an extended operating temperature (up to +100°C) and/or to protect the probe from mechanical damage. The probe is enclosed into an aluminum tube (length: approximately 1m, external diameter: 8mm). The probe can be easily disassembled and re-assembled into the support structure if necessary for re-calibration.



Figure 1. Photo of the PHS-C Probe Holder with a SENIS Hall probe installed enclosed in the holder

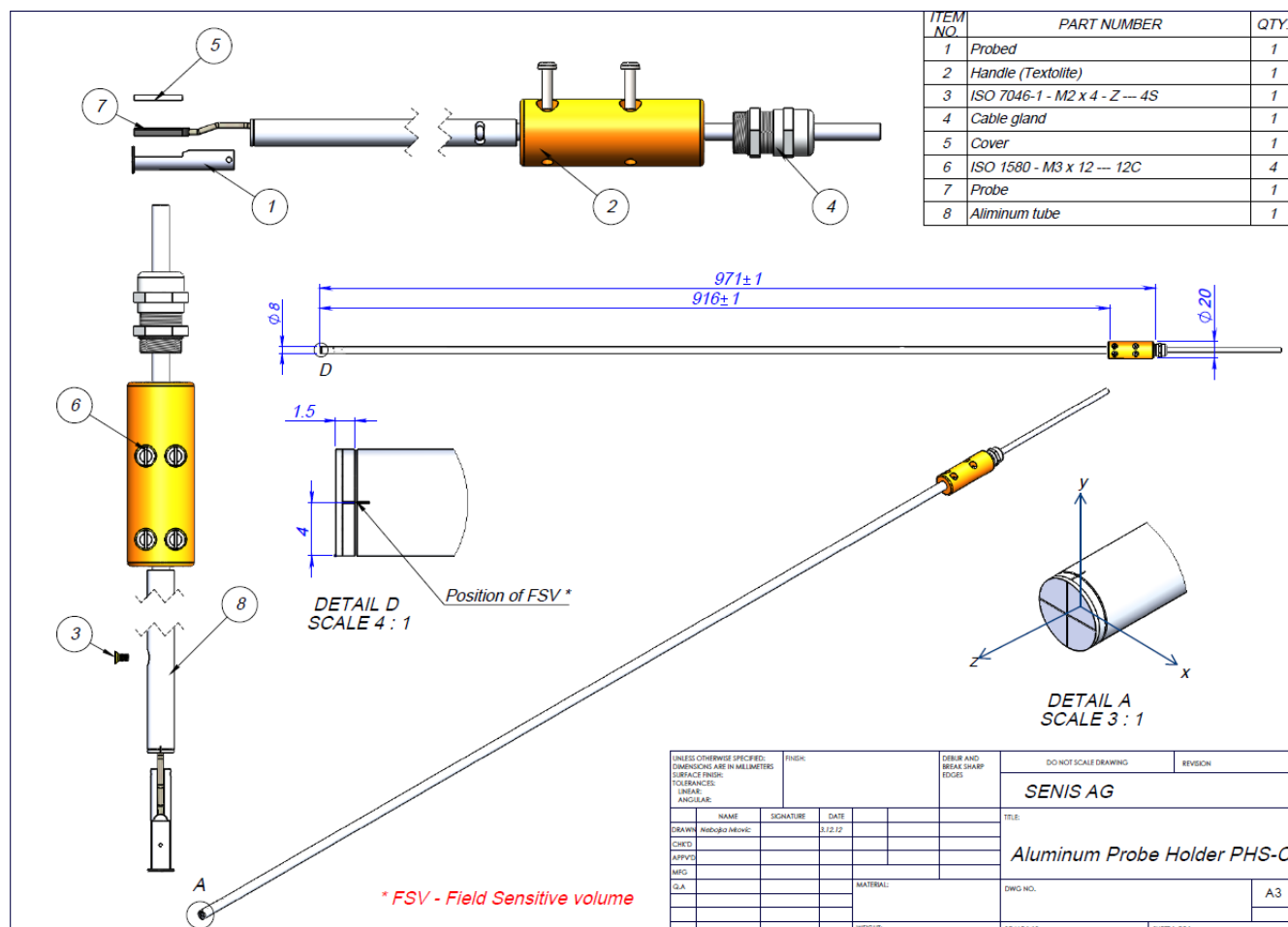


Figure 2. Mechanical specifications of the PHS-C Probe Holder. **DETAIL A** defines positive polarities for each of the X, Y and Z measurement axis.