



Sierra Wireless® oMM Management System

FEATURES

- Deploy, configure and remotely manage any Sierra Wireless gateway or router from your data center
- Advanced network diagnostics
- Real-time view of entire mobile network
- Remote troubleshooting and configuration management
- Multi-level user privileges
- Fleet segmentation
- Location-based reporting
- In the Cloud, or in your data center

Mobile Enterprise Network Management

Sierra Wireless® delivers a suite of solutions that connect mission critical applications. As part of the Sierra Wireless portfolio, the oMM Management System (oMM) is a mobile network management system that collects and analyzes data from a deployment of Sierra Wireless gateways and routers, including oMG Mobile Gateways (oMG) and AirLink gateways and routers. The oMM incorporates powerful tools to manage an entire mobile network and to monitor the status, accessibility, and utilization of all gateways and routers and wide-area networks (WAN). The oMM is available as a cloud-based service for oMG Mobile Gateways, hosted by Sierra Wireless, or as enterprise software, licensed for operation within the enterprise data center for all Sierra Wireless gateways and routers.

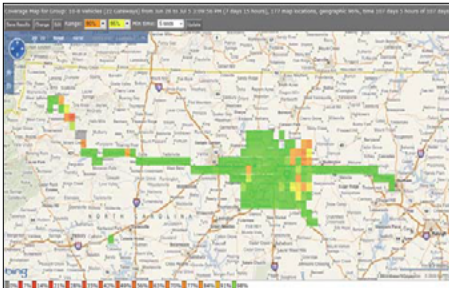
DASHBOARD

The dashboard provides a configurable, color-coded view of fleet health, enabling administrators to monitor a large number of gateways and routers and their associated operating parameters. Each parameter has a configurable multi-level threshold that can be programmed to change the color of each display icon as thresholds are exceeded. Display filters are provided to allow network managers to quickly focus on a subset of information. The fleet can be segmented into groups, and users assigned different levels of access. Many dashboard display parameters permit immediate 'drill down' for greater detail with a single click on a selected display element.

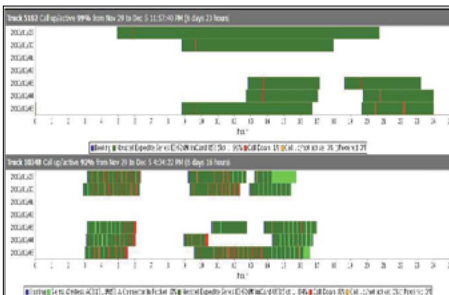
REMOTE MANAGEMENT, CONFIGURATION AND SOFTWARE UPDATES

The oMM supports remote and centralized management of the operating configuration of each Sierra Wireless gateway or router in the fleet. oMM users with administrative access can remotely reconfigure oMGs, gateways and routers individually over-the-air, or can use the mass configuration capability to apply new operating parameters to the entire deployment. These powerful remote management features are crucial to effective maintenance and long term performance of any large-scale mobile communications solution. The oMM also supports self-service software updates, allowing users with administrative access to remotely upgrade the firmware on their fleet of gateways or routers.

COVERAGE MAP



LINK UTILIZATION REPORT



CORE REPORTS

To augment the fleet status snapshot provided by the dashboard, historical reports are used for deeper analysis and troubleshooting using accumulated management information. Reports may be scheduled to run periodically, with results saved to the server and emailed to multiple recipients. Report data may be exported in Excel format for further manipulation or integration with other systems.

EXAMPLE CORE REPORTS

CORE REPORT	DESCRIPTION
COVERAGE MAPS	Maps wide-area network coverage based on data from multiple oMGs over a specified time
COVERAGE TRAILS	Maps the wireless service accessed along a path travelled by individual oMGs
AVAILABILITY TREND	Summarizes wireless connection availability as a percentage of total vehicle operating time for selected oMGs
BANDWIDTH CONSUMPTION	Reports data received and transmitted on each network for an individual oMG or groups of oMGs
LINK UTILIZATION	A time-based depiction of network connection status and multi-network switching for individual oMGs
EVENT VIEWER	A powerful troubleshooting tool that filters raw vehicle event data for selected oMGs.

LOCATION-BASED REPORTING

GPS and GNSS data supplied by Sierra Wireless oMGs and routers is used by the oMM to provide a location-based view of fleet management information. A map view of selected gateways and routers shows the last reported location, along with a color-coded flag, to indicate the status of each unit. Network coverage, network utilization and system utilization reports are available in mapped display formats. All map data are provided by Google™ maps.

STATISTICS

Access individual parameters for analysis and troubleshooting. oMG logs are automatically updated and stored on the server, ready for access at any time. Data may be sorted, filtered and displayed in a variety of ways to ensure fleet communications platform continues to perform optimally.

About Sierra Wireless

Sierra Wireless is building the Internet of Things with intelligent wireless solutions that empower organizations to innovate in the connected world. We offer the industry's most comprehensive portfolio of 2G, 3G, and 4G embedded modules and gateways, seamlessly integrated with our secure cloud and connectivity services. OEMs and enterprises worldwide trust our innovative solutions to get their connected products and services to market faster.

For more information, visit www.sierrawireless.com.