

THE MESSENGER



WESTLAKE UNITED METHODIST CHURCH

To live so that others will become disciples of Jesus Christ for the transformation of the world



Pastoral Reflections

THE JOURNEY OF LIFE

At Charge Conference last fall, the goals for Westlake UMC for the coming year were approved. As you may recall, one of those goals was to have a focus on spiritual formation for the congregation. Thus far we have been dedicated in achieving this goal through our study and practice of various spiritual disciplines in our small group ministries, discussions in sermons, and in our newsletter articles. As we continue to be purposeful in having a focus on spiritual formation and growing in our relationship with God, on April 9 Rev. Dr. Valerie Stultz will be leading us in an all-church day apart entitled, "The Journey of Life." As the focal point of our time apart, Dr. Stultz will guide us in a discussion of Richard Rohr's very popular book, *Falling Upward: A Spirituality for The Two Halves of Life*. Rohr observes that people in first-half-of-life religion are almost always focused on various types of law, the "thou shall not" lists. Those who are living in second-half-of-life religion are able to see the "both-and" in situations, not just the "either-or," As we move from the first to the second half of our lives Rohr writes, "So get ready for some new freedom, some dangerous permission, some hope from nowhere, some unexpected happiness, some stumbling stones, some radical grace, and some new and pressing responsibility for yourself and for our suffering world."

The timing of our day-apart has been chosen to be shortly after Easter in order that we may focus on what it means to live our lives as Easter people. To frame our discussions on April 9, Dr. Stultz has chosen as a grounding Scripture Colossians 3:1-2 from *The Message*, "So if you're serious about living this new resurrection life with Christ, act like it. Pursue the things over which Christ presides. Don't shuffle along, eyes to the ground, absorbed with the things right in front of you. Look up, and be alert to what is going on around Christ—that's where the action is. See things from *his* perspective."

I am confident that our time with Dr. Stultz will be very thought provoking and will assist us as we seek to grow in our relationship with God. As we celebrate the resurrection of Jesus Christ during this season of Eastertide, I encourage you to practice your spiritual disciplines daily to stay connected to our Triune God. God already loves each one of us. May we all stay in love with God.

Grace and Peace,

Pastor Mellie

¹Richard Rohr, *Falling Upward: A Spirituality for the Two Halves of Life* (San Francisco: Jossey-Bass, 2011), xxiii – 15.

²Rohr, *Falling Upward*, xii.

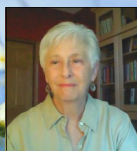
ALL CHURCH DAY APART

The Journey of Life

PRESENTED BY REV. DR. VALERIE STULTZ

Saturday, April 9th, 9:00 a.m.— 2:30 p.m.

In this day apart we will explore the concepts from Richard Rohr's book, *Falling Upward*. In the book, Rohr suggests that there are 2 halves of life. The first half is where we are building career, family, identity; the container of our life. In the second half, we are in search of the contents the container was made to hold; where we are aware there is much more. Often our failings and fallings, the times when life is way off the script we thought God had for us, are the stepping stones to the spiritual joys that the second half of life has in store. **Come explore a new paradigm for understanding one of life's most profound mysteries of spiritual growth!**



Cost of the retreat is \$10 and includes lunch. If you are interested in attending, please contact the office to see if there are spaces available — seating is limited. It is strongly recommended to read [Falling Upward](#) before the retreat. You can purchase a copy on amazon.com.

WESTLAKE UNITED METHODIST CHURCH

27650 Center Ridge Road * Westlake, Ohio 44145 * (440) 871-3088 * westlakeumc.org

Sunday Worship at 8:15, 10:00 and 11:28 a.m.

WESTLAKE UMC NEWS & UPDATES

COFFEE FELLOWSHIP SPONSORS

APRIL

- April 3 Bob & Shirley Peritch –
in celebration of our many church friends
- April 10 Liz & Dick Parks
- April 17 The McQuality Family
- April 24 The Twigg Family

Coffee Time Sponsors are still needed to support our coffee fellowship from now through the end of May. Cost is \$35. Your sponsorship keeps this important ministry of connection going! **You can find Sponsorship forms on the table near the coffee at Fellowship Hour.**

New Member Classes

OPEN TO ALL!

If you are interested in joining Westlake UMC or just would like more information about the church, the three new member classes are for you! Let the office know if you are interested in attending these classes. Childcare is available if needed.

- **Stewardship & Your Money Autobiography:**
Sunday, May 15th at 9:00 a.m.
- **Spiritual Gifts Discovery:**
Saturday, April 23rd at 9:00 a.m.
- **Coffee with the Pastor:**
Tuesday, April 26th at 7:00 p.m.



USO Cookies Needed

CANTEEN COOKIES FOR TROOPS

SUNDAY, APRIL 10TH BY 11:30 A.M.

Everyone is asked to donate store-bought cookies to the men and women of our armed forces on Sunday, April 10th. Please place them in the church kitchen on the cart marked USO. This will be very much appreciated by those who risk their lives for us! Thank you!

UMW Plant Sale!

SPRING IS COMING!

START PLANNING YOUR GARDEN!

A copy of the Plant Order Form is available in this Messenger. Forms are also available in the church lobby on the table across from the elevator. Take extra for family and friends! **Deadline for ordering is Sunday, April 17th.** Order forms with payment checks attached should be placed in the box across from the elevator.

Flower/plant sale pick-up will be Saturday, May 21st, 10 a.m.-12 p.m.

Questions? Please call Mary Klag at: (440) 934-8084

Many thanks to our Easter Outreach team!

Inviting and welcoming guests to join us for worship and in mission is everyone's responsibility. Thanks to the congregation for their extra efforts at Easter time and for those that put up yard signs, passed out flyers and took mugs to our first time guests. May you continue to be blessed to be a blessing in our community!



Javallelujah!

A new coffee maker and bean grinder is on the way to the WUMC kitchen! Soon the kitchen will be equipped with an updated coffee brewing system that will enable the church to brew much faster and in smaller batches directly into the airpots from which the coffee is served. This twin brewing system will even brew decaf and regular at the same time giving the church greater flexibility to meet demand. Grinding whole beans will save money and the step of hand measuring the grounds. The system is a gift from Larry and Tricia Bowersox in memory of her parents Merle and Glendine Jeffery, who ran all of the receptions in their home church and appreciated a well brewed cup of coffee!

SPIRITUAL GROWTH & SMALL GROUPS



New Adult Ed Class! Coffee Talk: TedTalks

**SUNDAY MORNINGS AT 9:00 (RM 107)
AND 10:15 (PASTOR'S OFFICE)**

**Coffee + selected TedTalks + faith driven
discussion questions = COFFEE TALKS.**

Whether you use old math or new math, it is easy to add up the appeal of this new adult program. Because maybe you've read the Bible or maybe you just see John 3:16 on bumper stickers, this class is open to you. Maybe you are a joiner or maybe you are a topic-based attendee or maybe any commitment leaves you twitchy, this class is open to you. We'll be pulling from some of the greatest secular **TedTalks**, listening to these unique perspectives together for 10-18 minutes, and then discussing their relevance in our Christian lives.

Coffee Talks kicks off with its first constructed series:

"WHO THE HECK ARE EASTER PEOPLE?"

Beginning April 3rd, we will share secular (non-religiously* designed TedTalks) that we will tie back to five weeks of Living as Easter people through:

April 3: Believe on Faith Alone: *Doubt is Essential to Faith*

April 10: Accept Forgiveness: *The Power of Vulnerability*

April 17: Discipleship: *The Importance of Talking to Strangers*

April 24: Do Good: *A Life of Purpose*

May 1: Stay in Love with God: *Falling in Love is the Easy Part*

For more information or to make Ted-Requests for our next series, please contact Carol Ryan or Sherri Cebuligas. (*Rev. Rick Warren's TedTalk is an exception.)

Monday Night Christ Care

BECOMING A GOOD SAMARITAN

STARTS MONDAY, APRIL 4TH AT 7 P.M.

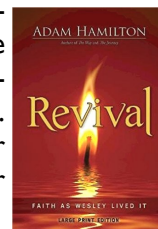
Weekly, we will be discussing "Becoming a Good Samaritan"—a DVD study that helps Christians live out Christ's love in world-changing ways, right now, right where you live! The group will be exploring issues like poverty, social injustice, pandemic diseases, the environment; and learning how to start making a personal, street-level impact today. Questions contact Gary Linch at gary_linch@yahoo.com

Bible Study with Pastor Mollie

**REVIVAL BY ADAM HAMILTON
THURSDAY, APRIL 7TH—MAY 12TH
AT 9:00 A.M.**

Please join Pastor Mollie each Thursday morning for five weeks as she explores *Revival* by Adam Hamilton. The coffee will be on waiting for you! Meet in Room 205.

"Wesley's message and his faith continue to speak to 21st-century Christians—calling for a revival of our hearts and souls so that our world might be changed. Join Adam Hamilton for a six-week journey as he travels to England, following the life of John Wesley and exploring his defining characteristics of a Wesleyan Christian. Wesley's story is our story. It defines our faith and it challenges us to rediscover our spiritual passion." (via Amazon.com)



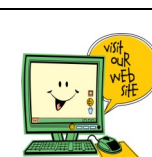
United Methodist Women General Meeting

**TOUR OF WESLEYAN VILLAGE
WITH COOKING DEMO & LUNCH!
THURSDAY, APRIL 14TH**



This month our group will tour Wesleyan Village in Elyria. There will be a carpool leaving the back parking lot of WUMC at 10:30 a.m. to arrive at the Village (front lobby) by 11:30 a.m.

There will be a short presentation on down-sizing your home. Lunch will be served after the chef's cooking demonstration, followed by an interesting tour of this lovely senior facility. Questions? Call Becky Dougan at (440) 366-5031.



For more details about events
and to view the church calendar,
please visit our website at
westlakeumc.org

COMPASSION & CONGREGATIONAL CARE

Caregivers Support Group

BEGINS MONDAY, APRIL 4TH 7-8PM

Perhaps you are caring for a loved one. Your role as a caregiver is incredibly important and one that demands much of you. You are not alone.



God is calling our church to embrace those on the sacred and difficult journey of caring for a loved one. This new group is launching with the goal of providing a faith based, safe place for caregivers to express their feelings and questions of faith, get resources and encouragement from others, and receive hope for the future.

WUMC, in conjunction with Rockport UMC, is starting this ministry which will **meet monthly on the 1st Monday of the month at Westlake United Methodist Church**. Caregivers are welcome to bring their care partner. A separate space and activities will be available for them, staffed by volunteers. The group will be facilitated by Thurston Cosner, Stephen Leader from Rockport UMC, and Gretty Myers, Stephen Leader from Westlake, UMC. Also joining us will be Kathy Tafuri,

Parish Nurse from Westlake UMC. We ask the congregation to pray for this new ministry. Please contact Gretty Myers to participate or to volunteer at (216) 701-2067 or grettymyers@sbcglobal.net.



Individual Prayer Time & Communion

WITH PRAYER PARTNERS

**SUNDAYS BEGINNING APRIL 3RD
9—9:30 A.M. OR 11—11:30 A.M.**

Prayer is the basis of our faith. Prayer allows us a time to praise God and gives us the opportunity to talk with God and share what is on our heart.

Communion opens us up to God's grace and nourishment – food for the journey.

Stephen Ministers will be available **every Sunday morning** in Room 203 from 9:00 – 9:30 and also 11:00 -11:30 to offer a quiet, reflective time for individual prayer and communion. All are welcome.

CHURCH FAMILY FOCUS

Thank You!

A note of thanks and gratitude to the caring community we all know as Westlake UMC:

Ken and I have been on the receiving end of gifts from prayers, visits, sustaining meals, offers of help and assistance, and heart-warming, tear-inducing (that's a beautiful thing!) cards.

Every night as I fall asleep, my head composes "a letter." In daylight, as I actually write it, it doesn't sound nearly as well-written as the one I "wrote" the night before! I have a feeling I could write a BOOK about the GIFTS we have received through our years in our church. For your part in this current chapter, our sincere, heart-felt, thanks to all of you. You have shared the journey and your friendship has sustained and enriched both of us.

-With love, Garland Wardell

Dear Community Meal Helpers,

Thank you all for providing a meal for me [in February]. I appreciate all the love and support of our church!

~Gail Combs

Thanks to all of my church friends for your prayers, your cards and calls while I have been ill. Your prayers and concern have been a great comfort to me.

Sincerely, Tess Stephens

Life Events

BAPTISM

Grace Rose Schultheiss, daughter of Alyssa and Ryan Schultheiss, and granddaughter of Carol Tessmer, was baptized by Rev. Mollie Brown on Sunday, March 13th at the 10:00 service. Her godparents are Sarah and Kyle White.

WITH SYMPATHY

Mary Holmes, WUMC Member, passed away March 1st. A memorial service was held on Saturday, March 5th at Westlake UMC, officiated by Rev. Mollie Brown.

Hazel Powell, mother of Jan Kappenhagen from Simpson UMC, passed away in March.

MISSION OPPORTUNITIES & UPDATES



Flat Rock
Restoring Hope. Transforming Lives. Living Faith.

Monthly Mission Event —

Race at the Rock!

Saturday, April 30, 2016

Flat Rock Homes will host the 11th Annual Race at the Rock to benefit the children and adults served by Flat Rock Homes, Flat Rock Care Center and Flat Rock Community Services at the Flat Rock Care Center campus. The race begins at 9:00 a.m. with an inspirational Special Athletes race and then is immediately followed by the 4-Mile and 1-Mile events. Awards will be available in the 4-mile run for the top three male and top three female finishers overall, as well as, the top three male and female finishers in the following age divisions: 12 and Under, 13-19, 20-29, 30-39, 40-49, 50-59, 60-69, 70 and over. In addition, the top three finishers in the walk will be recognized.

Register now or before April 1, 2016 and receive the early-bird rate. Registration will also be offered the morning of the race. If you have any questions or would like to receive a registration form by mail, please contact Becky Machovec at (419) 483-7330 ext. 1126 or at rmachovec@flatrockhomes.org ! You can sign up on your own or as a team. We will have a car pool sign up on the Mission bulletin board.

Mission Accomplished!

Westlake United Methodist Church (WUMC) donated over 300 pounds of books, a brand NEW laptop, money, and a bookcase to Evidence of the Gospel Ministries Jamaica (EGMJ). The donations were delivered on February 29, 2016. A big thank you from EGMJ to everyone at Westlake UMC who donated and supported the mission. Because of WUMC's generosity, EGMJ now has a library that serves children ages 3 to 16 years old who live in the inner city. You can see pictures and a thank you letter from EGMJ [here](#).

STOP HUNGER NOW UPDATE

From Stop Hunger Now:

We are delighted to announce that the meals from your meal packaging event on 1/10/2016 have been shipped in a container totaling 285,120 meals from our Pittsburgh warehouse. The meals will be received by our in-country partner CitiHope International in Dominican Republic.

With 42% of the population below the poverty line, food shortage is prevalent throughout the Dominican Republic. CitiHope provides food and other resources to schools, orphanages and other needy people and takes an active role in the distribution and monitoring. CitiHope supports sustainable educational and development programs that empower locals to create strong, self-sufficient communities. CitiHope's country director in the Dominican Republic says, "We consider this not to be 'charity' but a real investment in humanity. The school and orphanage programs help our country so much by creating a future of responsible citizens that contribute to the improvement of our society. These children come from families that cannot supply even one meal a day for their children and don't understand the purpose of education. So the motivation comes from the food!...These SHN donations are a defining component that heals a nation, multi-dimensionally."

30 HOUR FAMINE

A YOUTH MISSION PROJECT

Weekend of April 9th—10th

Youth will be fasting for 30 Hours to raise money for the World Vision organization. Every day, around the world, millions of children and families go hungry. Especially in today's world, it is necessary to have Christian organizations that help out in the midst of crisis. The youth who participate will fast for 30 hours, focusing on those who don't fast for fun -- but because they have to! **Please think about joining us, or sponsoring a youth who is participating.** Please see Rachael Haning or Carol Ryan for more information, or look on page 7 of this newsletter details.



Relay for Life of Westshore

SATURDAY, APRIL 30TH, 1 P.M. TO 11 P.M. @ WESTLAKE HIGH SCHOOL GYM

To **register** for this event to help support the American Cancer Society go to relayforlife.org/westshore.

Luminaria Order Forms are available in the WUMC lobby if you would like celebrate the life of someone who has battled cancer, or to remember someone who has lost their battle against the disease. Cost is \$10 and orders are due by April 25th. The Remembrance/Luminaria Ceremony will be held at dusk and light the track.

CHRISTIAN ED & FAMILY EVENTS

From the Desk of Christian Ed

Carol Ryan, cryan@westlakeumc.org

WHY ARE YOU HERE?

Why are you here? This is not meant as an existential question of the pedagogical parallel paradigms of existence: *Why are you here?* Nope. This time one cannot even use the answer we tell kids to use whenever in doubt which is “Jesus loves me”. This is the type of question one can answer at 8:00 a.m. on Monday morning before coffee. Yes. Seriously.

Why are you here, at Westlake United Methodist Church? For me, the answer is Paula Koziol. A friend invited me to come to this church. As a young mom, I had been in the building for a mommy and me music program lead by Jenny Zapfe. She was very nice to me. Once I wandered around the church, and Andy Call walked up and started to talk to me. He was very nice. But I came to church to attend worship because a friend invited me. She didn’t respond to a question from me asking about her church, and she didn’t say it with that hesitation people have if they want you to volunteer for something they don’t even enjoy. It was a message that left me questioning, what I am missing out on at Westlake UMC??!

At the recent NorthCoast District Leadership Academy program, the keynote speaker focused on evangelism. Yes. Your eyes just darted away to the next column right? It is a word that makes us Methodists a bit tongue-tied and happy to change a diaper, take a robo-call, help with new math, or anything to divert attention to a different topic. Yet, I juxtapose this panic with the laid back cool of youth member – Luke H. Rarely does this kid show up without bringing some new friend along. The crazy amazing thing is that these new friends seem to be staying, brining their parents, and some join the church. How could a mere 7th grader excel in what smells like evangelism without breaking a sweat?

As a queen of overcomplicating things, I think deconstructing evangelism might be strangely simple. Consider the most complicated baking recipe. Before figuring out how to blanch, julienned, or debate if evaporated milk comes from dehydrated cows, do one simple thing. Preheat. Even I can preheat. We can get lost in perfecting our faith testimonial, choke on articulating our faith, and

break into a sweat cheering at Little League that we are bathed in Christ’s love. Uncomplicate it. *Preheat*. Jesus didn’t send disciples out alone! Evangelism is sharing the good news. It isn’t memory verses. It isn’t a rationale to dislike people. It is sharing the good news. Before we get into why our friends should accept Christ, join our church, and respond to His Grace, let’s preheat. Let’s invite them. Let’s invite them to come hear the good news with us, among your church family. Setting the bar at Saul then Paul to Luke seems like baking baklava before mastering our first cupcake from a boxed mix. Let’s be like Luke and Paula.

Let’s each be the answer to one person’s question to: *Why are You at WUMC?*

APPRECIATION SPOTLIGHT

Kinder/Firstie Team



This year, we reshuffled the class groupings. One of the bigger changes was no longer offering a standalone kinder class but rather a combine K/1. Our Firsties peer leadership soars, and our Kinders are more vocal and engaged than ever. We thank families, and children for making this year one of joy and growth!

We could put a spotlight on the class teachers but His light beams brightly from them already! Yet we can extol our appreciation. Rachael K. and Kaela R., God loves you and so do these children. Want to know what helps these young women excel leading our young friends? They are **not** committed to the curriculum, and **they are** confident. When you put these two things together in the hands of able minded and compassionate teachers, you get a real commitment to the kids. Sometimes the lesson plans no matter how much we tweak them (or sometimes because of failed tweaks) includes a “clunker” activity. Rachael and Kaela swiftly focus on what is working with their class, extend projects that are engaging the kids, and make judgments to cut components they know won’t mix with the group they are leading. With the wise eyes of Mrs. Halaby looking on, these two teens made a commitment (like the class’s predecessor – Anna Marshall). Yet equally they honor more than a commitment to the Kinder and Firstie families, they are honoring their Confirmation.

Young or old, if you are looking for a way to use your God given gifts, please talk to any staff member!

EGGSTRAVAGNZA CREW

It was ~~eggs~~ special of many adults, and youth, to help set-up, boil eggs, run various stations, and clean-up this year's spectacular Eggstravagnza! If you have feedback or suggestions for next year, or you want to volunteer in 2017, please email us at cryan@westlakeumc.org.

SUMMER AND CHRISTIAN ED

WHO IS IN, AND WHO WILL HELP?

Summer Sunday school continues in the summer for children up to those entering third grade for the 2016-17 school year. This is a great opportunity for folks who may not be able to **volunteer** with children during the traditional program year due to participation with choir, hospitality, or a dozen school teachers who just need their weekend to be extra kid free. If you have an interest in co-teaching, or helping in the 10:00 a.m. Summer class one or twelve times, please contact Carol Ryan.

VBS is seeking **teens and adults to volunteer** as shepherds or "crew leaders" for the week of June 20-24. Volunteers may opt for morning or afternoon shift. Many of our teen team enjoy volunteering all-day with the 12-

2:30 break for having lunch, goofing off, and hanging out with the other high school volunteers. Teen volunteers seeking positions with our PK-entering 5th grade VBS must be entering 9th grade. To seek a coveted **Jr. Counselor** role with the 6th-8th grade all-day VBS that travels to exciting adventures in northeast Ohio, teens must have completed (1) a year of high school, and (2) commit to the program for the week. Preference is given to upperclassmen and college students, however, some soon-to-be sophomores have been paired with older Jr. Counselors in past years. To volunteer, contact Carol Ryan via cryan@westlakeumc.org or text (440) 864-5074.

Do you have a **Harry Potter fan** in your house? If so, we are interested to learn who might take advantage of a Summer Sunday Club loosely based on *The Gospel of Harry Potter* by Connie Neal which would be offered for six weeks this summer during the 11:28 worship hour. This discussion club would be designed for readers ages 10+. The *Harry Potter* series is not *The Chronicles of Narnia* series but with savvy leaders we hope to spark a better understanding of temptation, God's unstoppable invitation, and our true EXPECTO PATRONUM. The club will not reach beyond Book five (*Order of the Phoenix*). Interested? Let Carol Ryan know!

YOUTH!

... Have you heard?



APRIL YOUTH SCHEDULE

- 3** Regular Youth (5-8pm)
- 9-10** 30 Hour Famine
- 17** Regular Youth (5-8pm)
- 22-23** Confirmation Retreat
- 24** Confirmation Sunday
Regular Youth (5-8pm)

JUNE 5th Tentative Youth & Graduation Sunday

30 HOUR FAMINE: Weekend of April 9th—10th

It is time for us to do our Spring Missions, the 30 Hour Famine for World Vision. For those of you new to the group, we will be raising money (our goal this year is \$850 as a group -- that will feed TWO children for a year) to fast for 30 hours. It's like a walkathon, except instead of walking, we fast! All money goes to WorldVision.

We will all fast together, and during that time, we will be working through what it means to go hungry.

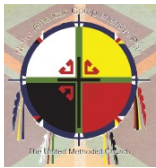
I encourage you to go to [THIS](#) link and read more about hunger around the world. We are incredibly blessed to live in a country where going 2 hours without food is a hardship... much less weeks! **So.... you ready to get hungry to stop hunger?** The theme this year is "Make it YOUR fight" and I encourage you to prayerfully consider making it YOUR fight! To register your attendance **April 9th-10th** (3pm Saturday—2pm Sunday) Click [HERE](#).

THANK YOU! The youth would like to thank the congregation for their tremendous support at the spaghetti dinner fundraiser! We served 122 meals, and raised almost \$100 per participant towards their trip. We would especially like to thank Debby Patterson for all her tremendous cooking skills... on her birthday! Thank you!

Please stay tuned for a coffee and chocolate related fundraiser coming soon!

QUESTIONS? Contact Rachael Haning, WUMC Youth Coordinator at youth@westlakeumc.org

COMMUNITY NEWS



Following Jesus on the Red Road

CONVERSATIONS ON CHRISTIANITY AND NATIVE AMERICA

SATURDAY, APRIL 16TH, 10 A.M.—3 P.M. @ FAIRVIEW GRACE UMC

The East Ohio Native American Ministry Committee invites you to actively engage in conversation about the gospel, Christianity, and the Native American experience. Speakers include Dr. Casey Church, Director of Wiconi International, and Kimberlee Medicine Horn Jackson, a local writer and educator. They will speak about the ways that Jesus' followers are integrating Christian faith with tribal traditions, and the intersections of native wisdom with the gospel. A time for a more in-depth exchange of ideas will follow each talk. The event will take place at Fairview Grace UMC.

Registration and \$10 are due by 5:00 p.m. on April 10th. The fee will cover the cost of a lunch that will feature traditional foods (*vegetarian and gluten-free options are available on request*). Please register online [HERE](#). If you have any questions, please contact Shawndelle Chester at the East Ohio Conference Office at (800) 831-3972 x132 or shawndelle@eocumc.com. More information available at the East Ohio Conference [website](#).

FINANCIAL INFORMATION

\$ Interested in Direct Deposit? Please contact Sharon Parks, Finance Manager: sparks@westlakeumc.org

Income Statement— February 2016

	February 2016	YTD 2016	2015	YTD 2015	YTD Budget	Annual Budget 2016
INCOME						
CONTRIBUTION INCOME	\$35,250.75	\$82,740.08	\$43,454.61	\$78,489.00	\$93,489.00	\$570,000.00
TOTAL INCOME	\$35,250.75	\$82,740.08	\$43,454.61	\$78,489.00	\$93,489.00	\$570,000.00
EXPENSES						
ADMINISTRATIVE EXP.						
STAFF PARISH EXP.	\$27,719.66	\$55,501.65	\$27,115.79	\$53,985.76	\$59,302.32	\$355,634.00
OFFICE EXP.	1,872.06	3,495.62	2,982.47	4,853.33	3,702.24	22,583.40
FINANCE TEAM EXP.	354.25	443.41	-70.92	5.54	266.66	1,880.00
FACILITIES EXP.	5,717.59	11,720.83	9,514.06	16,037.20	13,566.10	83,546.60
Subtotal Expenses	35,663.56	71,161.51	39,541.40	74,881.83	76,837.32	463,644.00
MINISTRY EXPENSE						
MUSIC EXP.	178.68	361.99	198.99	260.08	1,300.00	4,250.00
WORSHIP EXP.	1,043.97	1,020.34	574.90	1,323.82	1,553.75	8,375.00
EDUCATION EXP.	1,038.07	2,085.67	1,231.54	2,819.95	3,250.00	18,090.00
OUTREACH EXP.	292.97	858.81	55.27	429.43	755.00	8,065.00
MISSION EXP.	5,642.67	11,285.34	5,432.09	10,864.18	11,262.64	67,576.00
Subtotal Ministry Expense	8,196.36	15,612.15	7,492.79	15,697.46	18,121.39	106,356.00
TOTAL EXPENSES	43,859.92	86,773.66	47,034.19	90,579.29	94,958.71	570,000.00
EXCESS INCOME/EXPENSES	-\$ 8,609.17	-\$ 4,033.58	-\$ 3,579.58	-\$ 12,090.29	-\$ 1,501.73	\$0.00

WESTLAKE U.M.W. FLOWER SALE

Order deadline is Sunday, April 17th. Please complete BOTH sides of this form.
 Orders with payments may be placed in the box in the lobby across from the elevator.
 Any questions? Please contact Mary Klag at (440) 934-8084

BASKET GERANIUMS
Basket of 8—4” pots
\$24.00
QTY.
_____ Candy Pink
_____ Purple
_____ Red
_____ Magenta
_____ Light Salmon
_____ White

SPECIALTY ANNUAL
4.5” pots \$4.50 each
QTY.
_____ LOBELIA
_____ White
_____ MILLION BELLS
_____ Purple
_____ Pink
_____ Red
_____ Lemon Slice <u>NEW</u>
_____ Terra Cotta
_____ SWEET POTATO VINE
_____ Black
_____ Yellow
_____ WAVE PETUNIA
_____ Blue
_____ Pure Yellow <u>NEW</u>
_____ Purple
_____ Pink

BEDDING FLATS *	32 per flat — \$14.00
QTY.	QTY.
_____ AGERATUM	_____ LOBELIA
_____ Blue	_____ Blue
_____ ALYSSUM	_____ MARIGOLDS
_____ White	_____ Janie Yellow
_____ Purple	_____ Janie Orange
_____ BEGONIA	_____ Janie Mix
_____ Bronze Leaf Pink	_____ Inca Orange 2
_____ Green Leaf Pink	_____ Inca Yellow 2
_____ Bronze Leaf Scarlet	_____ PETUNIAS
_____ Green Leaf Scarlet	_____ Single Mix
_____ Bronze Leaf White	_____ White
_____ Green Leaf White	_____ Red
_____ Bada Mix	_____ Deep Purple
_____ (All above)	_____ Pink
_____ COLEUS	_____ Sky Blue
_____ Mix	_____ PORTULACA
_____ DAHLIA—DWARF	_____ Mix
_____ Mix	_____ SALVIA
_____ DIANTHUS	_____ Victoria Blue
_____ Mix	_____ SALVIA — DWARF
_____ DUSTY MILLER	_____ Red
_____ Silver	_____ SNAPS — DWARF
_____ IMPATIENS	_____ Mix
_____ Lipstick Pink	_____ TORENIA
_____ White	_____ Mix
_____ Red	_____ ZINNIA—SHORT
_____ Salmon	_____ Mix
_____ Mixed	



(For more choices, turn over!)

SPECIALTY POTS
4.5" pots \$4.50 each

QTY.	
	NEW GUINEA IMPATIENS
_____	Pink
_____	Red
_____	Purple
_____	White
_____	Orange
_____	Salmon
	TUBEROUS BEGONIA
_____	Pink
_____	Red
_____	Orange
_____	Yellow
_____	Salmon

HANGING BASKETS
10" pots (prices as marked)

QTY.		QTY.	
	FERNS 10" \$22.00		SPECIALTY ANNUAL COMBO \$18.50
_____	Green	_____	Dean's Sunny Daze
	FUSCHIA 12" \$18.50	_____	American Anthem
_____	Fuschia	_____	Pink Lemonade
	GERANIUM COMBO \$18.50	_____	Express Yourself <u>NEW</u>
_____	Red	_____	Night in Pompeii
_____	Pink	_____	Callie Color Wheel
_____	Salmon	_____	Walk on a Cloud <u>NEW</u>
	NEW GUINEA IMPATIENS \$18.50	_____	Blueberry Parfait
_____	Purple	_____	Pop the Bubbly
_____	Salmon		WAVE PETUNIA \$18.50
_____	Pink	_____	Blue and White <u>NEW</u>
_____	Red	_____	Red and White <u>NEW</u>
		_____	Pink, Blue & White <u>NEW</u>
		_____	Yellow <u>NEW</u>

TOTAL Number of Plants*: _____ **TOTAL amount enclosed: \$** _____
— PAYMENT DUE WITH ORDER —
**Deans will make variety and/or color substitutions if necessary, matching your order as closely as possible*

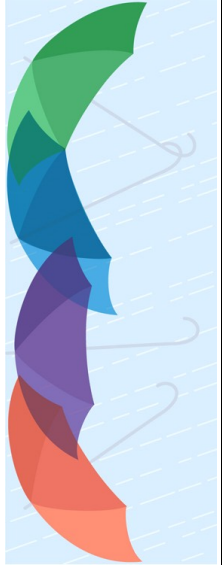
ORDER DEADLINE: Sunday, April 17, 2016
Return forms to box in lobby across from elevator
Make checks payable to: Westlake UMW

Questions? Contact the CHAIRPERSON: Mary Klag (440) 934-8084

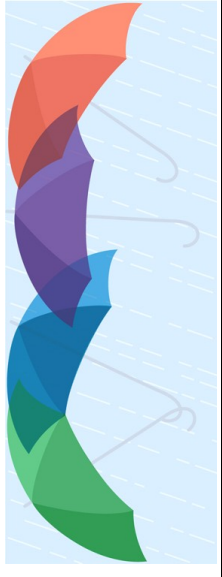
Name: _____
Address: _____
Phone: _____ **Email:** _____



PICK-UP DATE (in church parking lot): Saturday, May 21st, 10 a.m. to 12 p.m.



April 2016



Sun	Mon	Tue	Wed	Thu	Fri	Sat
<p>3</p> <p>12:30pm ChristCare-EP (100) 7pm ChristCare-G/J/L (105) 7pm Leadership Team (205) 7pm Caregivers Group (100 & 107)</p> <p>9 & 10:15am TedTalks Youth Group 5—8 pm (FH)</p>	<p>4</p> <p>12:30pm ChristCare-EP (100) 7pm ChristCare-G/J/L (105) 7pm Leadership Team (205) 7pm Caregivers Group (100 & 107)</p>	<p>5</p> <p>5:00 pm Oberlin Choristers (FH) 7:30 pm Rehearsal</p>	<p>6</p> <p>12pm Purl Girls (100) 1pm Parish Nurse Available 1:30pm Arthritis Exer. (103) 6:30pm SPRC (107) 7 pm ChristCare-GM (205)</p>	<p>7</p> <p>9 am Bible Study (205) 10 am CWRU (107) 10 am UMW Bd. Mtg (104) 5:30pm Marijana Anon (100) 6:15pm Handbell Choir 7:30pm Choir Rehearsal</p>	<p>8</p> <p>3:30—6pm Theater Group</p>	<p>9</p> <p>9:00AM—2:30PM ALL CHURCH DAY APART "A JOURNEY OF LIFE" (FELLOWSHIP HALL)</p> <p>3:30—6pm Theater Group</p> <p>30 HOUR FAMINE (3PM) →</p>
<p>10</p> <p>10am Hensley Baptism</p> <p>9 & 10:15am TedTalks 11:30am USO Cookies Due 5pm Forgiveness Study (100)</p> <p>→ 30 HOUR FAMINE (2PM)</p>	<p>11</p> <p>12:30pm Games 'N Such (FH) 12:30pm ChristCare-EP (100) 7pm ChristCare-G/J/L (205) 7pm Stephen Ministry (107) 7pm Trustees (105)</p>	<p>12</p> <p>5:00 pm Oberlin Choristers (FH) 7:00 pm Missions Team (107)</p>	<p>13</p> <p>9:30am All Staff Mtg 12pm Purl Girls (100) 1pm Parish Nurse Available 1:30pm Arthritis Exer. (103) 2 pm ChristCare-JMc (205) 7 pm ChristCare-GM (205) 7:30pm 11:28 Rehearsal</p>	<p>14</p> <p>9 am Bible Study (205) 10 am CWRU (107) 10:30am UMW Carpool to Wesleyan Village 5:30pm Marijana Anon (100) 6:15pm Handbell Choir 7:30pm Choir Rehearsal</p>	<p>15</p> <p>3:30—6pm Theater Group</p> <p>MESSENGER DEADLINE</p>	<p>16</p> <p>6:30pm ChristCare—JK/LK</p>
<p>17</p> <p>UMW Flower Sale Orders Due</p> <p>9 & 10:15am TedTalks 5pm Forgiveness Study (100) Youth Group 5—8 pm (FH)</p>	<p>18</p> <p>12:30pm ChristCare-EP (100) 7pm ChristCare-G/J/L (205) 7 pm Finance Cmnte (107)</p>	<p>19</p> <p>5:00 pm Oberlin Choristers (FH)</p>	<p>20</p> <p>12pm Purl Girls (100) 1pm Parish Nurse Available 1:30pm Arthritis Exer. (103) 7:30pm 11:28 Rehearsal</p>	<p>21</p> <p>9 am Bible Study (205) 10 am CWRU (107) 5:30pm Marijana Anon (100) 6:15pm Handbell Choir 7:30pm Choir Rehearsal</p>	<p>22</p> <p>CONFIRMATION RETREAT (Church of the Savior) →</p> <p>3:30—6pm Theater Group</p>	<p>23</p>
<p>24</p> <p>CONFIRMATION @ 10:00 A.M.</p> <p>9 & 10:15am TedTalks 5pm Forgiveness Study (100) Youth Group 5—8 pm (FH)</p>	<p>25</p> <p>Organ Tuning (Sanct) 12:30pm ChristCare-EP (100) 7pm ChristCare-G/J/L (205)</p>	<p>26</p> <p>5:00 pm Oberlin Choristers (FH) 7:00 pm Coffee with the Pastor</p>	<p>27</p> <p>12pm Purl Girls (100) 1pm Parish Nurse Available 1:30pm Arthritis Exer. (103) 2 pm ChristCare-JMc (205) 5:30pm Community Meal 7 pm ChristCare-GM (205) 7:30pm 11:28 Rehearsal</p>	<p>28</p> <p>9 am Bible Study (205) 10 am CWRU (107) 10 am UMW Mission Outreach (FHall) 5:30pm Marijana Anon (100) 6:15pm Handbell Choir 7:30pm Choir Rehearsal</p>	<p>29</p> <p>11am—12:30pm L. Kubancik Recital (Sanct)</p>	<p>30</p> <p>RACE AT THE ROCK FLAT ROCK HOMES 8:30 A.M.</p>

WESTLAKE UNITED METHODIST CHURCH STAFF

Rev. Mollie Brown	Senior Pastor: mgbrown@westlakeumc.org
Annie Kaschube	Organist, Director of Children's Choir and Handbell Choir
Carol Ryan	Christian Education Director
Ellie Peiffer	Small Group & Welcoming Ministries
Gretty Myers	Stephen Ministry Coordinator
Jeanne Halaby	Childcare Assistant
Jessica Proctor	Childcare Assistant
Jill Farkas	Custodian
Kathleen Kryz	Office Assistant
Kathy Tafuri	Volunteer Parish Nurse
Marshall Haning	Director of Music & Adult Choir
Morgan Lux	Childcare Assistant
Patti Barnes	Nursery Coordinator
Rachael Haning	Youth Coordinator
Rich Gallo	11:28 Worship Leader
Sharon Parks	Finance Manager
Stephanie Fries	Manager of Church Operations

WUMC Librarians: Nanci Danburg & Judy McDonald

OTHER PASTORS CONNECTED TO THIS CONGREGATION:

Dr. Richard Parks	Rev. Ron Dietrich	
Rev. Don Lefelar	Rev. Bob Remington	
Rev. Diana Guyette	Dr. Richard Lehto Rev. Tom Taylor	

VACATION BIBLE SCHOOL 2016

June 20— 24th



*** MESSENGER ARTICLES FOR MAY: DUE FRIDAY, APRIL 15TH ***

DATED MATERIAL—DO NOT DELAY
Mailed March 30, 2016



Sunday Worship at
8:15 a.m. (Reflective)
10:00 a.m. (Traditional)
11:28 a.m. (Contemporary)

westlakeumc@westlakeumc.org
www.westlakeumc.org
(440) 871-3088
Westlake, Ohio 44145
27650 Center Ridge Road

**CHURCH
UNITED METHODIST
WESTLAKE**

RETURN SERVICE REQUESTED