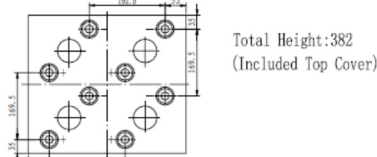
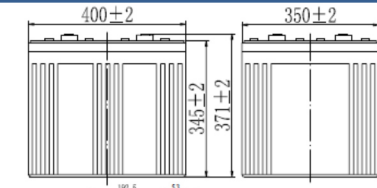


RPower OGiV215000L (2V 1500Ah Battery)

Floating Life at 20°C designed for 12+ years

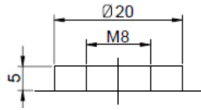
EAN: 4260123689759

Dimensions

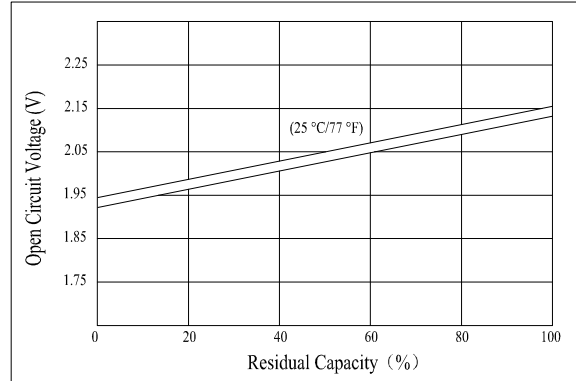


Total Height: 382
(Included Top Cover)

Terminal



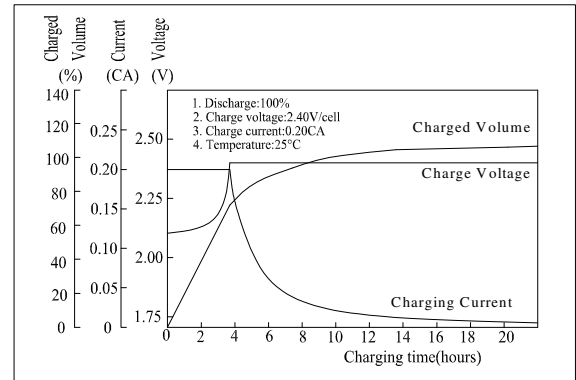
Relationship for Open Circuit Voltage/Residual Capacity



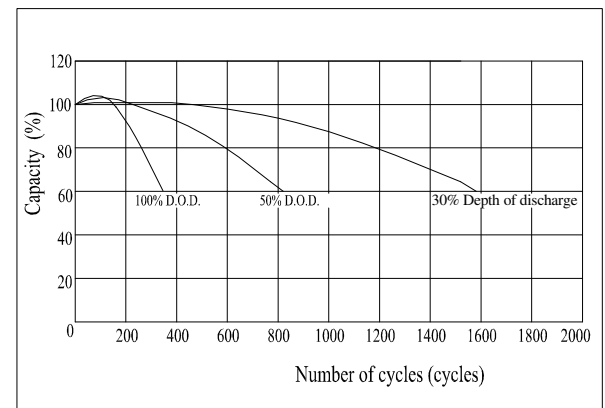
Specifications

Nominal Voltage		2V
Capacity (10hr@25°C@1.8V/C)		1500Ah
Dimensions	Length	400mm (15.75inch)
	Width	350mm (13.78inch)
	Height	345mm (13.58inch)
	Total Height	382mm (15.04inch)
Approx. Weight		94kg (207.3lbs)
Maximum charging current		300A
Maximum discharge current		9000A (5sec.)
Internal resistance		Approx. 0.2mΩ
Capacity affected by temperature (20hr)	40°C	103%
	25°C	100%
	0°C	86%
	-15°C	65%
Self-discharge (25°C)	3 month	Remaining Capacity: 91%
	6 month	Remaining Capacity: 82%
	12 month	Remaining Capacity: 65%
Nominal operating temperature		25°C ±3°C (77°F±5°F)
Operating temperature range		-20°C ~ 55°C (-4°F ~ 131°F)
Float charging voltage (25°C)		2.28 to 2.30V
Cyclic charging voltage (25°C)		2.40 to 2.50V
Terminal material		Copper

Charging Characteristics



Cycle Life in Relation to Depth of Discharge



Constant Current Discharge Characteristics (Ampere / Cell, 25°C)

F.V/TIME	30min	1h	2h	3h	4h	5h	6h	8h	10h	20h	24h
1.60V/cell	1350	900	548	390	314	272	234	184	153	80,2	69,5
1.70V/cell	1283	864	540	385	310	269	231	181	152	79,8	69,1
1.80V/cell	1206	821	518	371	298	259	223	175	150	78,8	68,3

Constant Power Discharge Characteristics (Watt / Cell, 25°C)

F.V/TIME	30min	1h	2h	3h	4h	5h	6h	8h	10h	20h	24h
1.60V/cell	2525	1710	1058	765	615	537	461	365	304	160	140
1.70V/cell	2398	1642	1042	755	607	530	455	361	302	160	139
1.80V/cell	2254	1560	1001	727	585	510	439	347	299	158	137

Valid from 12-2014