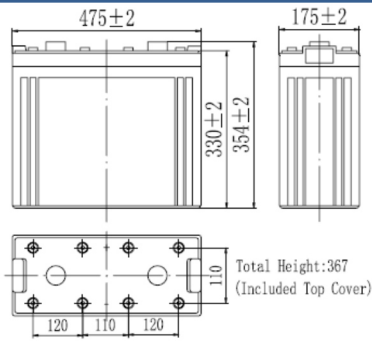


RPower OGiV212000L (2V 1200Ah Battery)

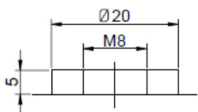
Floating Life at 20°C designed for 12+ years

EAN: 4260123689742

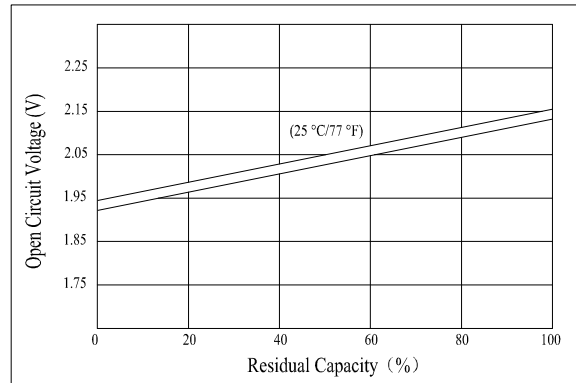
Dimensions



Terminal



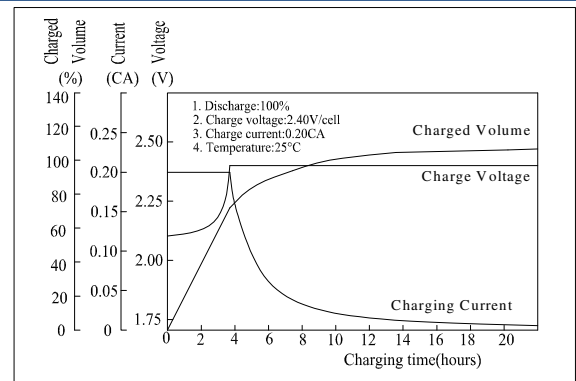
Relationship for Open Circuit Voltage/Residual Capacity



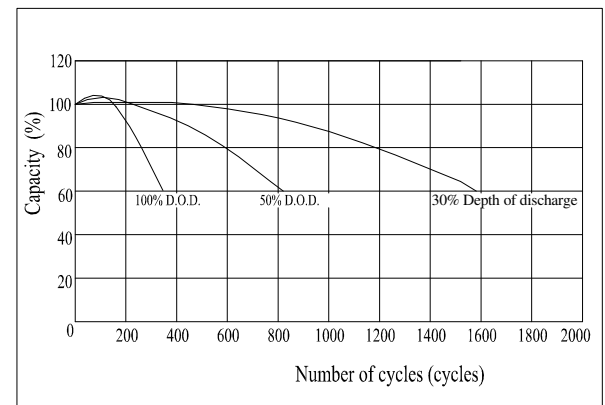
Specifications

| | | |
|---|--------------|-----------------------------|
| Nominal Voltage | | 2V |
| Capacity (10hr@25°C@1.8V/C) | | 1200Ah |
| Dimensions | Length | 475mm (18.7inch) |
| | Width | 175mm (6.89inch) |
| | Height | 330mm (12.99inch) |
| | Total Height | 367mm (14.45inch) |
| Approx. Weight | | 68kg (149.9lbs) |
| Maximum charging current | | 240A |
| Maximum discharge current | | 8500A (5sec.) |
| Internal resistance | | Approx. 0.25mΩ |
| Capacity affected by temperature (20hr) | 40°C | 103% |
| | 25°C | 100% |
| | 0°C | 86% |
| | -15°C | 65% |
| Self-discharge (25°C) | 3 month | Remaining Capacity: 91% |
| | 6 month | Remaining Capacity: 82% |
| | 12 month | Remaining Capacity: 65% |
| Nominal operating temperature | | 25°C ±3°C (77°F±5°F) |
| Operating temperature range | | -20°C ~ 55°C (-4°F ~ 131°F) |
| Float charging voltage (25°C) | | 2.28 to 2.30V |
| Cyclic charging voltage (25°C) | | 2.40 to 2.50V |
| Terminal material | | Copper |

Charging Characteristics



Cycle Life in Relation to Depth of Discharge



Constant Current Discharge Characteristics (Ampere / Cell, 25°C)

| F. V/TIME | 30min | 1h | 2h | 3h | 4h | 5h | 6h | 8h | 10h | 20h | 24h |
|------------|-------|-----|-----|-----|-----|-----|-----|-----|-----|------|------|
| 1.60V/cell | 1080 | 720 | 438 | 312 | 251 | 218 | 187 | 147 | 122 | 64,1 | 55,6 |
| 1.70V/cell | 1026 | 691 | 432 | 308 | 248 | 215 | 185 | 145 | 122 | 63,8 | 55,3 |
| 1.80V/cell | 964 | 657 | 415 | 297 | 239 | 207 | 178 | 140 | 120 | 63,0 | 54,6 |

Constant Power Discharge Characteristics (Watt / Cell, 25°C)

| F. V/TIME | 30min | 1h | 2h | 3h | 4h | 5h | 6h | 8h | 10h | 20h | 24h |
|------------|-------|------|-----|-----|-----|-----|-----|-----|-----|-----|-----|
| 1.60V/cell | 2020 | 1368 | 846 | 612 | 492 | 429 | 369 | 292 | 243 | 128 | 112 |
| 1.70V/cell | 1919 | 1313 | 834 | 604 | 486 | 424 | 364 | 289 | 242 | 128 | 111 |
| 1.80V/cell | 1804 | 1248 | 800 | 582 | 468 | 408 | 351 | 278 | 239 | 126 | 110 |

Valid from 12-2014