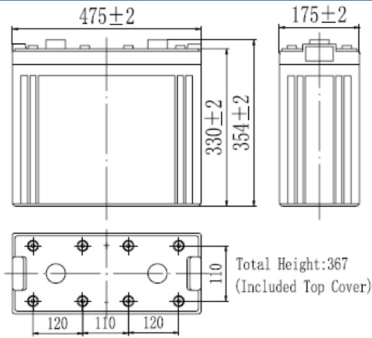


RPower OGiV210000L (2V 1000Ah Battery)

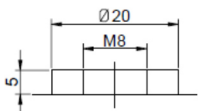
Floating Life at 20°C designed for 12+ years

EAN: 4260123689735

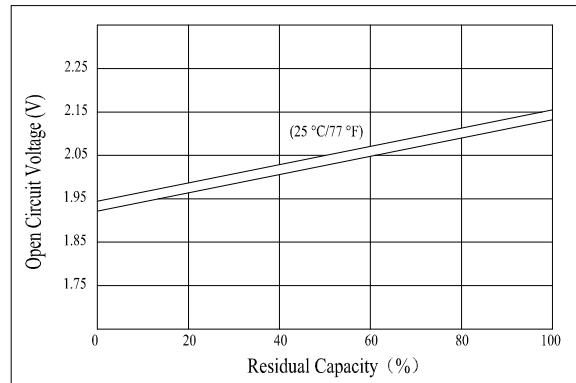
Dimensions



Terminal



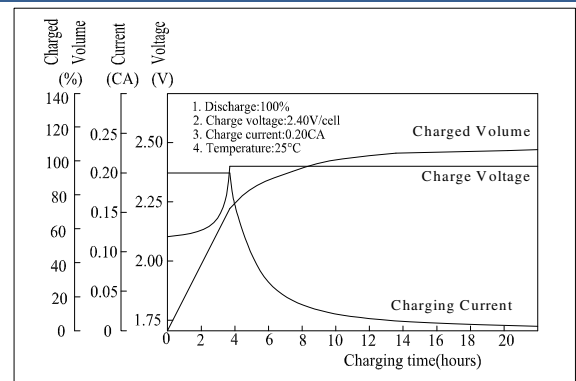
Relationship for Open Circuit Voltage/Residual Capacity



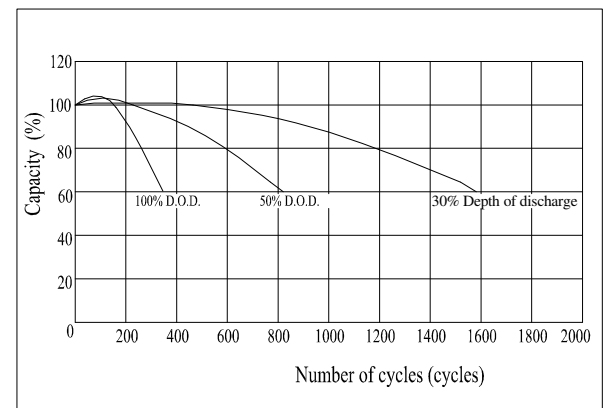
Specifications

Nominal Voltage		2V
Capacity (10hr@25°C@1.8V/C)		1000Ah
Dimensions	Length	475mm (18.7inch)
	Width	175mm (6.89inch)
	Height	330mm (12.99inch)
	Total Height	367mm (14.45inch)
Approx. Weight		61kg (134.5lbs)
Maximum charging current		200A
Maximum discharge current		7500A (5sec.)
Internal resistance		Approx. 0.28mΩ
Capacity affected by temperature (20hr)	40°C	103%
	25°C	100%
	0°C	86%
	-15°C	65%
Self-discharge (25°C)	3 month	Remaining Capacity: 91%
	6 month	Remaining Capacity: 82%
	12 month	Remaining Capacity: 65%
Nominal operating temperature		25°C ±3°C (77°F±5°F)
Operating temperature range		-20°C ~ 55°C (-4°F ~ 131°F)
Float charging voltage (25°C)		2.28 to 2.30V
Cyclic charging voltage (25°C)		2.40 to 2.50V
Terminal material		Copper

Charging Characteristics



Cycle Life in Relation to Depth of Discharge



Constant Current Discharge Characteristics (Ampere / Cell, 25°C)

F.V/TIME	30min	1h	2h	3h	4h	5h	6h	8h	10h	20h	24h
1.60V/cell	900	600	365	260	209	182	156	122	102	53,4	46,3
1.70V/cell	855	576	360	257	206	179	154	121	101	53,2	46,1
1.80V/cell	804	547	346	247	199	173	148	116	100	52,5	45,5

Constant Power Discharge Characteristics (Watt / Cell, 25°C)

F.V/TIME	30min	1h	2h	3h	4h	5h	6h	8h	10h	20h	24h
1.60V/cell	1683	1140	705	510	410	358	307	244	203	107	93,1
1.70V/cell	1599	1094	695	503	405	353	304	240	202	106	92,6
1.80V/cell	1503	1040	667	485	390	340	292	232	199	105	91,5

Valid from 12-2014