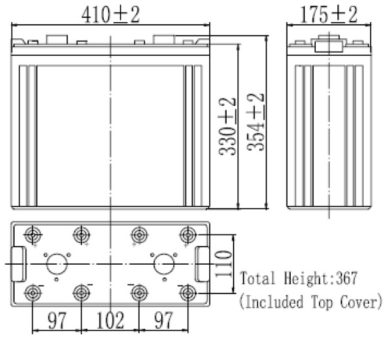


# RPower OGiV29000L (2V 900Ah Battery)

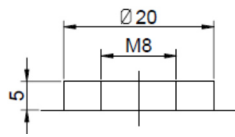
Floating Life at 20°C designed for 12+ years

EAN: 4260123689728

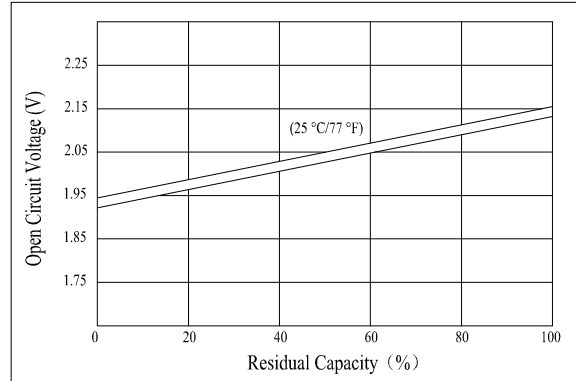
## Dimensions



### Terminal



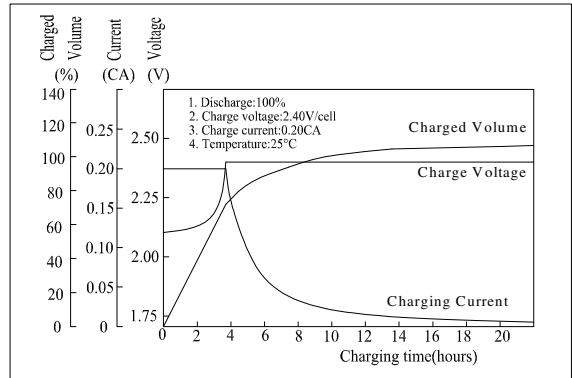
## Relationship for Open Circuit Voltage/Residual Capacity



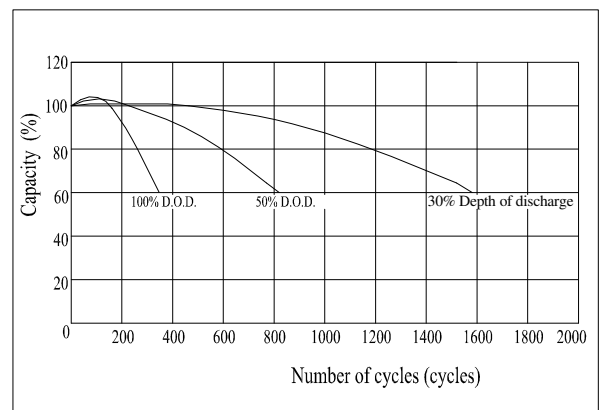
## Specifications

Nominal Voltage		2V
Capacity (10hr@25°C@1.8V/C)		900Ah
Dimensions	Length	410mm (16.14inch)
	Width	175mm (6.89inch)
	Height	330mm (12.99inch)
	Total Height	367mm (14.45inch)
Approx. Weight		54.5kg (120.1lbs)
Maximum charging current		180A
Maximum discharge current		6500A (5sec.)
Internal resistance		Approx. 0.3mΩ
Capacity affected by temperature (20hr)	40°C	103%
	25°C	100%
	0°C	86%
	-15°C	65%
Self-discharge (25°C)	3 month	Remaining Capacity: 91%
	6 month	Remaining Capacity: 82%
	12 month	Remaining Capacity: 65%
Nominal operating temperature		25°C ±3°C (77°F±5°F)
Operating temperature range		-20°C ~ 55°C (-4°F ~ 131°F)
Float charging voltage (25°C)		2.28 to 2.30V
Cyclic charging voltage (25°C)		2.40 to 2.50V
Terminal material		Copper

## Charging Characteristics



## Cycle Life in Relation to Depth of Discharge



## Constant Current Discharge Characteristics (Ampere / Cell, 25°C)

F.V/TIME	30min	1h	2h	3h	4h	5h	6h	8h	10h	20h	24h
1.60V/cell	810	540	329	234	188	163	140	110	91,6	48,1	41,7
1.70V/cell	770	518	324	231	186	161	139	109	91,2	47,9	41,5
1.80V/cell	723	492	311	223	179	155	134	105	90,0	47,3	41,0

## Constant Power Discharge Characteristics (Watt / Cell, 25°C)

F.V/TIME	30min	1h	2h	3h	4h	5h	6h	8h	10h	20h	24h
1.60V/cell	1515	1026	635	459	369	322	277	219	182	96,2	83,8
1.70V/cell	1439	985	625	453	364	318	273	216	181	95,7	83,4
1.80V/cell	1353	936	600	436	351	306	263	208	179	94,5	82,3

Valid from 12-2014