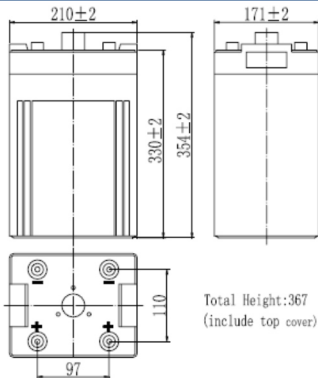


RPower OGiV24000L (2V 400Ah Battery)

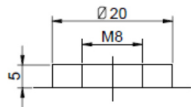
Floating Life at 20°C designed for 12+ years

EAN: 4260123689667

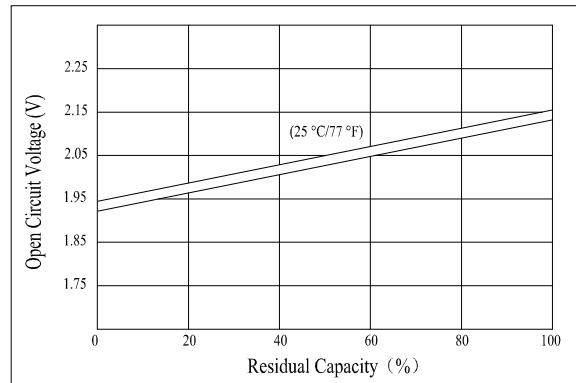
Dimensions



Terminal



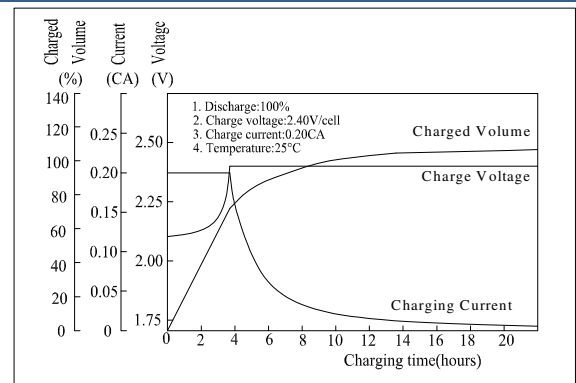
Relationship for Open Circuit Voltage/Residual Capacity



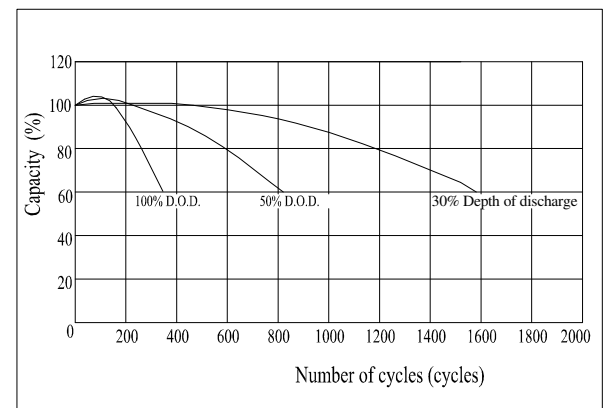
Specifications

Nominal Voltage		2V
Capacity (10hr@25°C@1.8V/C)		400Ah
Dimensions	Length	210mm (8.27inch)
	Width	171mm (6.73inch)
	Height	330mm (12.99inch)
	Total Height	367mm (14.45inch)
Approx. Weight		25.5kg (56.2lbs)
Maximum charging current		80A
Maximum discharge current		2800A (5sec.)
Internal resistance		Approx. 0.6mΩ
Capacity affected by temperature (20hr)	40°C	103%
	25°C	100%
	0°C	86%
	-15°C	65%
Self-discharge (25°C)	3 month	Remaining Capacity: 91%
	6 month	Remaining Capacity: 82%
	12 month	Remaining Capacity: 65%
Nominal operating temperature		25°C ±3°C (77°F±5°F)
Operating temperature range		-20°C ~ 55°C (-4°F ~ 131°F)
Float charging voltage (25°C)		2.28 to 2.30V
Cyclic charging voltage (25°C)		2.40 to 2.50V
Terminal material		Copper

Charging Characteristics



Cycle Life in Relation to Depth of Discharge



Constant Current Discharge Characteristics (Ampere / Cell, 25°C)

F. V/TIME	30min	1h	2h	3h	4h	5h	6h	8h	10h	20h	24h
1.60V/cell	360	240	146	104	83,6	72,6	62,4	49,0	40,7	21,4	18,5
1.70V/cell	342	230	144	103	82,6	71,7	61,6	48,3	40,5	21,3	18,4
1.80V/cell	321	219	138	98,9	79,5	69,1	59,4	46,6	40,0	21,0	18,2

Constant Power Discharge Characteristics (Watt / Cell, 25°C)

F. V/TIME	30min	1h	2h	3h	4h	5h	6h	8h	10h	20h	24h
1.60V/cell	673	456	282	204	164	143	123	97,4	81,0	42,8	37,2
1.70V/cell	640	438	278	201	162	141	121	96,2	80,6	42,5	37,1
1.80V/cell	601	416	267	194	156	136	117	92,7	79,6	42,0	36,6