

**Mountain Biking - Mangapurua /
"Bridge to Nowhere" Track 7-8 Hours**



Whanganui River Adventures Camping Ground / Pipiriki



Our camping ground is situated in Pipiriki Village, the southern gateway to the Whanganui National Park, where you can link up with jetboat and canoe tours or somewhere to camp while driving/cycling through the stunning Whanganui River Road.

We have a secluded setting in Pipiriki where you can relax and enjoy the beautiful bush scenery.

We have:

- Tent sites
- Non powered campervan sites
- 6 Bunk cabin / own or hire bedding/towels
- Family cabin
- Communal kitchen & lounge area
- Camp store / Takeaway

Camp facilities are basic and affordable.



Whanganui River Adventures
(Incorporating Pipiriki Tours and River Spirit Jet Tours)
Whanganui River, New Zealand

Locality Map - Central Region



Locality Map - Pipiriki Enlargement

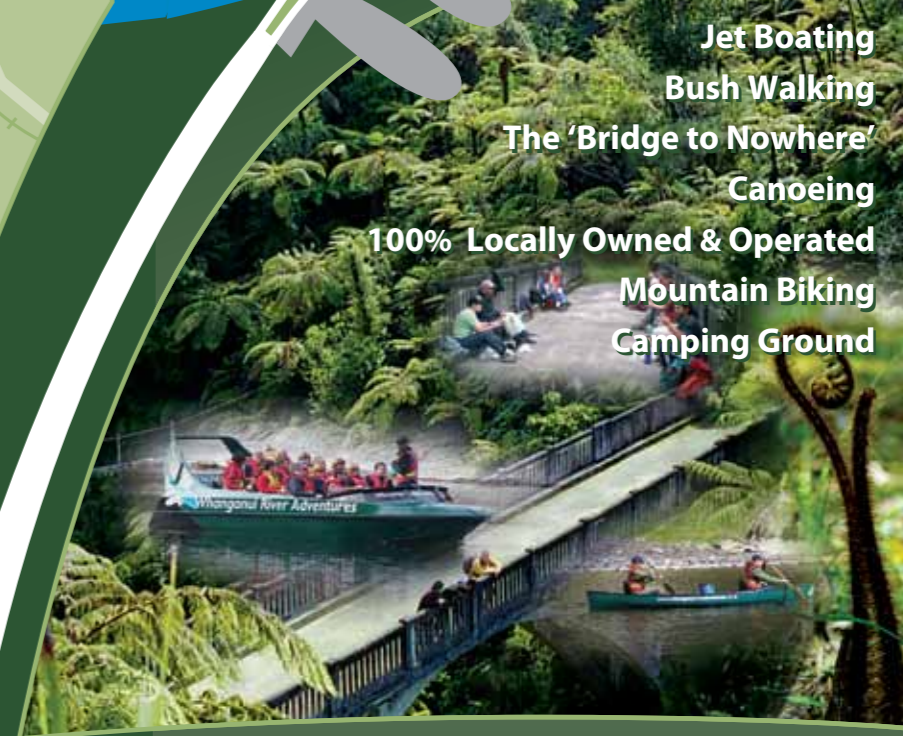


Whanganui River Adventures

P I P I R I K I



**Jet Boating
Bush Walking
The 'Bridge to Nowhere'
Canoeing
100% Locally Owned & Operated
Mountain Biking
Camping Ground**



0 8 0 0 T O B R I D G E

0800 862 743

www.whanganuiriveradventures.co.nz

Note: This track is now part of the NZ National Cycle Way.

Kia Ora (Hello)

*Nau mai, haere mai koutou nga manuhiri ki te awa o Whanganui
(Welcome to all our visitors to the Whanganui River)*

Pipiriki, the southern gateway to the Whanganui National Park, it is from here, your operator – WHANGANUI RIVER ADVENTURES welcomes you aboard. All tours are small ensuring a memorable experience and can be tailor-made to suit your personalised requirements.

Ken (your local guide/driver, who first started driving Commercial jetboats in 1985) and his wife – Josephine (whose family have been on the river for generations and still work and live there today) have extensive local knowledge and stories of their entire childhood of growing up and living alongside the mystical Whanganui River, Ken will share with you the history and stories of the river stops and of the early settlers in the Mangapurua Valley – the famous “Bridge to Nowhere”.



The “Bridge to Nowhere” 4-4.5 Hours

Join Whanganui River Adventures on the “Bridge to Nowhere” tour, departing from Pipiriki, we jetboat upriver for 32kms (55 mins) through fern & flax cloaked gorges, along the way your local driver/guide will stop and share with you historical and scenic points of interests.

After arriving at the Mangapurua Landing, you will be guided on a gentle 40 minute walk to the “Bridge to Nowhere” – a large concrete structure built in 1936 to give early pioneering farmers access to their farms, an area known as “The valley of Abandoned Dreams”, where you will stop for lunch on this historical monument of a bygone era.

What to bring:

- Lunch, warm jacket and suitable walking footwear

We provide:

- Tea, coffee and Biscuits

Departs from Pipiriki: Check-in 10am

Manganui O Te Ao Tour 45 Minutes

This stunningly scenic jet boat tour departs from Pipiriki and takes you to the Manganui O Te Ao river flowing off the western slopes of Mt Ruapehu, home to the endangered native blue duck (whio). Explore the deep ravines covered in mosses and an array of native ferns with the forests reaching for the sky. **Departure Time: On demand**



RESERVATIONS ESSENTIAL!
To Book, or for more Information Contact:

Ken & Josephine Haworth
RD 6, Whanganui River, New Zealand

Ph/Fax 06 385 3246
E mail info@whanganuiriveradventures.co.nz

Canoe and Kayak Hire

The “Whanganui River Onedayer Adventure” 6-7 Hrs

Join Whanganui River Adventures on the “best oneday tour” available on the majestic Whanganui River departing from PIPIRIKI, we jetboat upriver for 32kms, (55mins) through fern & flax cloaked gorges, along the way your local driver/guide will stop and share with you historical and scenic points of interest.

After arriving at the Mangapura Landing, you will be guided on a gentle 40 minute walk to the “Bridge to Nowhere” where you will stop for lunch on this historical monument of a bygone era.

On your return back down the river by jetboat, we will stop 10kms before Pipiriki and after instructions and a demonstration on how to operate your canoe, we will let you paddle yourself back to Pipiriki (2-3hrs) soaking up the afternoon sun and enjoying nature at it’s finest.

What to bring:

- lunch, drinking water
- suitable walking footwear & warm jacket
- light clothing for canoeing (NO DENIM TROUSERS)
- Sunglasses
- Sunscreen/hat

We provide:

- Tea, coffee & Biscuits

Departure Time: 10:30am

NOTE:

The “Whanganui River Onedayer Adventure” & “Traveller with Very Little Time” tour operates September – April (Weather & River conditions permitting)

The “Traveller with Very Little Time” 3-5 Hrs

Your local driver/guide – will jetboat you upriver for 13kms and will give you instructions and a demonstration on how to operate your canoe before you paddle yourself/s back to Pipiriki, exploring and enjoying the native scenery, deep river gorges and some of the more exciting rapids along the way.

What to bring:

- Lunch, drinking water
- Suitable walking footwear & warm jacket
- Light clothing for canoeing (NO DENIM TROUSERS)
- Sunscreen/hat

Departure Time: On demand



NOTE:

- Raincoats supplied if required
- Audited annually by Maritime New Zealand
- Department of Conservation Concession Holder
- Secure car parking at our Pipiriki Base
- Minimum Fares apply
- All Safety Approved
- Lifejackets are used
- Minimum Ages Apply

The Overnighter - (Jet boat and Canoe Tour) 2 Days



DAY 1: Join Whanganui River Adventures on our daily tour to the BTN. Once you have returned back to the river after visiting the “Bridge to Nowhere” your driver/guide will give you instructions and a demonstration on how to paddle your canoe. From the Mangapurua Landing you paddle 2 hrs (12kms) down to Tieke Kainga/Hut.

DAY 2: From Tieke Kainga/Hut you have a 20km paddle down to Pipiriki. This takes approximately 4-5 hours through some of the best scenery on the Whanganui River, with long flat sections of water and also some rapids to keep it interesting.

What You Need To Know:

Book your overnight passes at Tieke Kainga/Hut on the DOC Website (<https://booking.doc.govt.nz>). Check in time at our base (Whanganui River Adventures) is at 9am to allow time for packing overnight luggage into water tight barrels. Minimum number & Ages apply.

Prior bookings are **ESSENTIAL!**

Tour Available From: November – March.
Dependant on weather and river conditions.

What to bring:

- Overnight Clothing /Sleeping Bag & Tent
- Food & Cooking Utensils

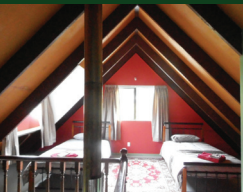
Note: Whanganui River Adventures have the right to alter, cancel or amend all tour itineraries due to river or weather conditions.

Pipiriki Cottage

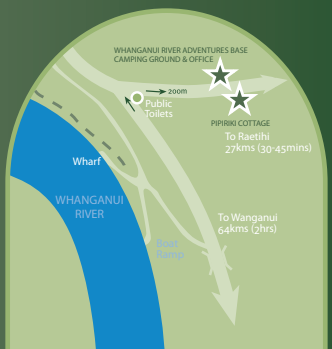
ACCOMMODATION

Pipiriki Cottage - Sleeps 6:

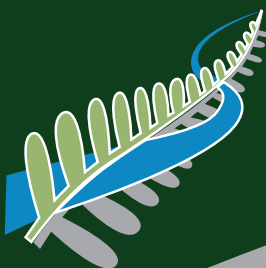
This is a lovely three bedroom cottage located amongst the village residence. It has two double bedrooms with a Queen bed in each room and two single beds in the third room. It also has a great size deck for you to relax and enjoy nature on your doorstep. Comes with all the necessities of a home. Shared bathroom, all linen and towels supplied.



A great place to stay before or after an adventure on the Whanganui River



Whanganui River



Pipiriki Cottage ACCOMMODATION



Self-contained accommodation in
Pipiriki Village, the Southern gateway
to the Whanganui National Park.

BOOKINGS & ENQUIRES

email: info@whanganuiriveradventures.co.nz

0800 862 743

www.whanganuiriveradventures.co.nz