

## Galleries & Museums

**Art & Framing**  
17 Taupō Quay.  
Mon 12.00pm – 4.00pm,  
Tue – Fri 10am – 5.00pm, Sat 9.30am – 2pm  
Sat 9.30am – 1pm  
Ph: 06 348 4463  
[www.artandframing.co.nz](http://www.artandframing.co.nz)

**Chronicle Glass Gallery & Studio**  
2 Rutland St.  
Tue 9am – 1pm, Wed – Sat 10am – 4pm.  
Closed Sun/Mon.  
Glass blowing starts again on 10 Sept. Furnaces closed till then.  
[www.chronicleglass.co.nz](http://www.chronicleglass.co.nz)

**David Traub Glass | The Glass Factory NZ**  
21 Kings Ave, Wanganui  
Open daily by appointment  
Art work, gifts and classes  
Ph: 021 113 7970  
[www.glass-newzealand.co.nz](http://www.glass-newzealand.co.nz)

**Edith Gallery**  
Whanganui UCOL, entrance from Taupō Quay.  
Tue – Fri 10am – 3pm,  
Sat 11am – 1pm  
(closed Sun – Mon)  
[www.ucol.ac.nz](http://www.ucol.ac.nz)

**Gallery on Guyton**  
62 Guyton St.  
Wed – Sat, 11am – 4pm  
Ph: 027 310 2055  
[gallerionguyton@gmail.com](mailto:gallerionguyton@gmail.com)  
[www.facebook.com/gallerionguyton](http://www.facebook.com/gallerionguyton)

**Leftbank Art Supplies**  
19 Taupō Quay  
Mon – Fri 10am – 4pm  
Sat 10am to 1pm  
Ph 06 345 0949  
[leftbankartsupplies@gmail.com](mailto:leftbankartsupplies@gmail.com)

**McNamara Gallery Photography**  
190 Wicksteed Street, Wanganui.  
11am – 3pm Tue – Sat  
[www.mcnamara.co.nz](http://www.mcnamara.co.nz)

**Yellow Church Gallery**  
SH1, Mangaweka.  
Resident Artist Richard Aslett.  
Weekends & most other days 10am – 5pm  
06 382 5774 / 027 52 666 12  
[www.freeewebs.com/mangawekagallery](http://www.freeewebs.com/mangawekagallery)

**Quay Gallery**  
Upstairs in the new I-site, Wanganui Visitor's Centre, 31 Taupō Quay.  
Weekdays 8.30am – 5pm, Sat/Sun 9am – 3pm

**Rayner Brothers Gallery**  
52 Guyton Street, Wanganui.  
Wed – Fri 12pm – 4pm,  
Sat 10am – 1pm.  
[www.raynerbrothers.com](http://www.raynerbrothers.com)

**Sargeant Gallery**  
Te Whare o Rehua Whanganui  
Sargeant on the Quay  
38 Taupō Quay  
Mon – Sun, 10.30am – 4.30pm  
[www.sargeant.org.nz](http://www.sargeant.org.nz)

**Sand Hill Studio Gallery**  
170 Heads Rd.  
Variety of mixed-media artwork from various local artists  
Wed – Fri 12pm – 4pm, Sat 12 – 2pm  
or Ph: 06 347 8442  
[www.sandhillgallery.co.nz](http://www.sandhillgallery.co.nz)

**Space Gallery & Studios**  
64 Taupō Quay  
Tues – Thurs 10am – 2pm Friday 12 – 4pm.  
Ph 027 371 8595  
NEW WEBSITE:  
[www.spacestudiogallery.co.nz](http://www.spacestudiogallery.co.nz)

**Sue Cooke Gallery & Studio**  
Open 1–5pm Mon–Fri or by appointment  
68A Guyton St.  
[www.suecooke.co.nz](http://www.suecooke.co.nz)

**Whanganui Arts – At The Centre**  
19 Taupō Quay, Whanganui.  
Mon–Fri 10am–4pm; Sat 10am–1pm.  
Phone Lidy for bookings - 027 215 1404  
EFTPOS and credit card facilities  
[www.whanganuiarts.com](http://www.whanganuiarts.com)

**Whanganui Regional Museum & art gallery featuring local artists.**  
Watt Street, Wanganui.  
Hours: 10am – 4.30pm daily.  
NOW FREE TO ALL VISITORS  
[www.wrm.org.nz](http://www.wrm.org.nz)

**WHMilbank Gallery**  
Open most days. 1B Bell St.  
Ph: 027 628 6877  
[bill.milbank@gmail.com](mailto:bill.milbank@gmail.com)

## ON THIS MONTH...



Jean Luc Goddard's *Breathless*, Whanganui Film Society, Mon 20 Oct



Painting by Cheleigh Dunkerton featured in the group exhibition *When In China*, on show at Space Studio & Gallery 18–31 Oct

## COVER IMAGE

From *The Hero's Journey: Part 2* by Graham Hall  
The exhibition comprises of a narrative of 12 woodcuts developing the ideas within Joseph Campbell's book *The Hero of a thousand Faces* exploring the rites of passage we all navigate. Everyone is a Hero in their own Story.  
Space Studio & Gallery 11–17 Oct



Platinum prints by Lawrence Aberhart, on show this month at McNamara Gallery Photography



## Awa Info

VIEW AWA ONLINE:  
[www.awaeventguide.co.nz](http://www.awaeventguide.co.nz)

**ADVERTISING AND LISTING:**  
Deadline 20th of the month for publication on 1st of the month. \$10 per event listing and advertising rates start at \$55 plus GST for a quarter page.  
**Enquiries to Karen Craig:**  
[awaeventguide@gmail.com](mailto:awaeventguide@gmail.com)  
ph: 021 132 3939 or 06 347 2067.

Subscribe for free, to receive AWA Event Guide as soon as its off the press, or pick up a copy at your local art gallery or cafe.

AWA is produced by Helen Craig  
[www.artunltd.co.nz](http://www.artunltd.co.nz).  
Layout & design by Joseph Salmon  
[www.josephsalmon.co.nz](http://www.josephsalmon.co.nz).  
BIG THANKS to H&A Design & Print and our advertisers.  
AWA is funded solely through advertising support.

**WHANGANUI FESTIVAL OF CULTURES**  
**SAT 18 OCTOBER | 10.30AM**  
**MAJESTIC SQ (if wet Memorial Hall)**  
[www.mainstreetwanganui.co.nz](http://www.mainstreetwanganui.co.nz)

**MAINSTREET HALLOWEEN**  
**FRIDAY 31 OCTOBER 3PM - 7PM**  
**WANGANUI CBD**  
**DRESS UP, TRICK OR TREAT, JOIN IN THE SPOOKY FUN**  
[WWW.MAINSTREETWANGANUI.CO.NZ](http://WWW.MAINSTREETWANGANUI.CO.NZ)

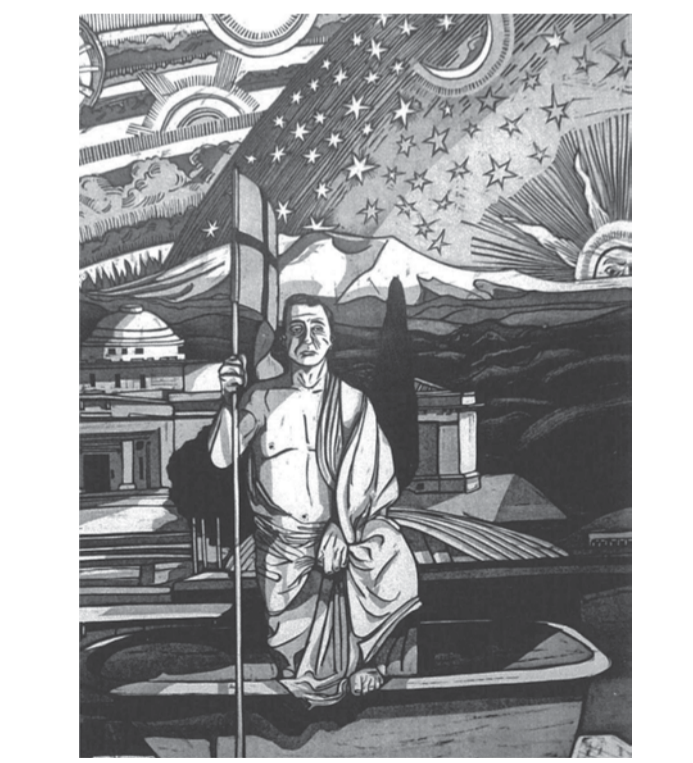
**WANGANUI - The River City -**  
*The most comprehensive online source for:*  
Events, Things To Do, Business Listings, Funeral Notices, Sport and much more.  
[www.WanganuiOnline.com](http://www.WanganuiOnline.com)

**RIVERSIDE BAR**  
**SPECIALTY LIVE MUSIC VENUE**  
**see events list for gig details**

**ZONTA FASHION PARADE**  
WEDNESDAY 15TH OCTOBER 2014  
7PM  
RACECOURSE FUNCTION CENTRE  
TICKETS \$25  
Sponsored by:  
Bright Beginnings  
Andersons  
Footloose & Silvesters

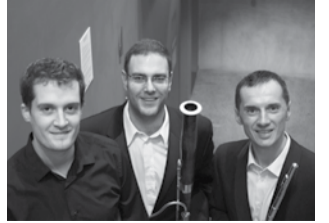
**GLASS SALE**  
Fundraising sale of handmade glass by students at Wanganui Glass School  
vases  
art glass  
cupcakes  
bowls  
starfish  
treasures  
**UCOL ATRIUM THURSDAY 2 OCT**

**AWA EVENT GUIDE**  
**WHANGANUI**



**Debbie's Place\***  
*Free Workshops for the Arts at Gonville Café Library*  
October 6th – Press Releases  
12.30pm – 1.30pm: Basic Workshop on Press Releases for the Arts with Lyn Cheyne, Promotions and Marketing Manager, Wanganui District Council.  
October 10th - Funding Workshops for the Arts  
12.30pm – 1.00pm: Creative Communities Scheme Funding Workshop  
1.00pm – 1.30pm: Fundview and Breakout Funding Workshop  
**Wanganui Creative Communities Scheme Round Two 2014**  
Funding is available for local community based arts activities from the Creative Communities Scheme (CCS). The scheme aims to increase participation in the arts at a local level and increase the range and diversity of arts available to communities. The second round of applications for the Creative Communities Scheme 2014 closes at 12.00 noon on Friday, 28 November 2014. Applications are available on the Council website or by contacting me.  
*Tip of the month: Creative New Zealand's social media is an excellent resource for keeping up with the latest funding opportunities and webinars, for example, a good place to start is their Twitter and You Tube.*  
To contact me:  
<http://twitter.com/DeborahKapohe>  
[www.facebook.com/deborah.kapohe](http://www.facebook.com/deborah.kapohe)  
[debbie.kapohe@wanganui.govt.nz](mailto:debbie.kapohe@wanganui.govt.nz)

**Donizetti Trio**  
Wednesday October 8th  
7.30pm  
Prince Edward Auditorium, Collegiate School, Grey St.  
Adults \$32, Seniors \$28, Students \$5 or subscription  
Music for Opera lovers, played by Luca Manghi (flute), Ben rHoadley (bassoon) & David Kelly (piano).



**OCTOBER 2014**  
[www.awaeventguide.co.nz](http://www.awaeventguide.co.nz)



## NEW EXHIBITIONS

### OUR PEOPLE, OUR PLACE

Wed 1 Oct – Fri 31 Oct, open daily  
8.30am – 4 pm

Yellow House Cafe, cnr of Dublin & Pitt St

Portraits of everyday people living and playing in Whanganui.

### LYNN HURST – NATURE MORTE

Fri 10 Oct opening 5.30pm to Sun 26 Oct

Edith Gallery

### WINDOWS ON LANDSCAPE

Fri 10 Oct opening 5.30pm, to Sat 1 Nov

Rayner Brothers Gallery  
Paintings by Joanna Paul, Peter Ireland and Elva Abbott.

### PRE-CHRISTMAS EXHIBITION

Fri 10 Oct opening 5.30pm to Sun 19 Oct

10 – 4pm daily

Sand Hill Studio Gallery

Guest Potter - Tony Kale;  
Guest Artist - Tina Drayton.

### GRAHAM HALL – THE HERO'S JOURNEY: PART 2

Sat 11 Oct opening 5.30pm to Fri 17 October

Space Studio & Gallery

12 woodcuts developing the ideas within Joseph Campbell's book "The Hero of a Thousand Faces", exploring the rites of passage we all navigate.

### RURAL LIFE

16 – 19 Oct, Cafe hours

Element Cafe rear room

Artwork from 5 talented rural women. All artwork for sale and funds raised donated to an education bursary.

### WHEN IN CHINA: A GROUP EXHIBITION

Sat 18 Oct opening 5.30pm to Fri 31 Oct

Space Studio & Gallery

Featuring Cheleigh Dunkerton, Richard Chan, Rebekah Tomlinson & Floyd Clotworthy. The exhibition is comprised of four artists who have lived in China. Their artworks are inspired by their experiences there.

## CONTINUING EXHIBITIONS

### LAURENCE ABERHART: HEAVY METAL

To Fri 24 Oct

McNamara Gallery Photography

The platinum print process causes the platinum to lie within the paper surface, causing the image to be absolutely matte and have the texture of whatever paper is used. Prints are valued for their great range of subtle tonal variation and their permanence.

### HANDLE WITH CARE

To Sun 16 Nov

Quay Gallery

Packing up the Sarjeant Gallery's Collection.

### WHMILBANK GALLERY

### GAME SET & MATCH

To Fri 31 Oct

More from Trusttut's extensive Tennis series.

### CLUSTERS

#### Selected works from stock

To Fri 31 October

### RESALE WORKS

To Sun 30 Nov

### SARJEANT ON THE QUAY

#### LIYEN CHONG

To Sun 23 Nov

Dreams Circles Moons Fictions (and fragments found on the forest floor of disquietude).

#### 2014 BRYCE SMITH & ASSOCIATES WHANGANUI ARTS REVIEW

To Sun 30 Nov

A selected exhibition showing the strength and diversity of art making in the Whanganui region.

### WHANGANUI REGIONAL MUSEUM

#### NEW: MOA GALLERY

The Museum's collection of over 2000 bones and articulated moa skeletons is the largest permanent display of moa bones in the world. Come in and see what is a landmark resource for the general public, researchers and scientists worldwide.

#### TAHĀ – A CONVERSATION WITH HINE PŪ TE HUE

To 2 Feb 2015

From the ancient and modern Māori worlds, hue and tahā (gourds) are represented alongside interactive programmes of art, history and gardening. Featuring works by members of Manawa Ora Whanganui, the Maori Artists' Collective.

#### HOUSE OF BONES

To Oct 2016

Uncover, discover what's under the skin. Skulls, skeletons and bones tell how bones work and why they are important. There are plenty of bone activities available for young visitors.

## EVENTS

### THE RIVER TRADERS, WHANGANUI'S MARKET BY THE RIVER

Saturdays 9am-1pm

Market Place, near i-site.

### RIVERSIDE BAR

Taupō Quay, Whanganui

Specialty Live Music Venue

October Events:

- Thu 2: Human Extinction Machine 8pm, koha entry.
- Fri 3: Black Trio EP Release 8.30pm, \$5 cover.
- Sat 4: Classmatic Boogie Orchestra 8.30pm, \$5 cover.
- Sun 5: Sunday Acoustic Session 3–5pm, koha entry.
- Thu 9: Terry Sarten 8pm, koha entry.
- Fri 10: Singles Night with illusionist Anton Van Helden 7.30pm, \$5 cover.
- Sat 11: 12 Hour Urban Music Festival 2pm–2am, \$10 all day pass.
- Sun 12: Sunday Acoustic Session 3–5pm koha entry.
- Thu 16: Alternative Music Thursday 8pm, koha entry.
- Fri 17: Winsome Lost/Palomino 8.30pm, \$5 cover.
- Sat 18: Heathen Collective Tour (metal) 8.30pm, \$10 cover.
- Sun 19: 3rd Sunday Jazz 3–5pm, koha entry.
- Thu 23: Alternative Music Thursday 8pm, koha entry.
- Fri 24: Hobnail 8.30pm, \$10 cover
- Sat 25: Tama K and Mahia Blackmore 8.30pm, \$5 cover.
- Sun 26: Sunday Acoustic Session 3–5pm, koha entry.
- Thu 30: Alternative Music Thursday 8pm, koha entry.
- Fri 31: The Flannels (classic rock) 8.30pm, \$5 cover.

### INDUSTRY RACEDAY

Thu 2 Oct, 12.45pm – 4.45pm

Whanganui Jockey Club

### "WIND IN THE WILLOWS"

Thu 2 & Fri 3 Oct, 7:30pm

Amdram, Guyton Street

Classic family entertainment!

### UCOL GLASS STUDENTS FUNDRAISING SALES TABLE

Thu 2 Oct, 9am to 3pm

Atrium, UCOL Wanganui

Prices from \$1 to \$100 for art glass seconds, beads, baubles, cupcakes and bowls.

### MORE FM KIDS FUN DAY

Fri 3 Oct, 10am to 2pm

Whanganui War Memorial Centre

For ages 0–10 years old. Price \$5 per child, adults free.

### THE BLACK TRIO EP RELEASE PARTY

Fri 3 Oct, 9pm

Riverside Bar

With special guests Bakers Eddy, \$10 entry.

### WHANGANUI MUSICIANS CLUB

Fri 3 Oct, 7pm

Savage Club Hall, Drews Ave.

"Strangers In The Night" Featuring Erin {Chch}, Amiria Grennel and Phil Jones{Welly}, Ebony Lamb Band{welly}, and Jol Mulholland band {Auck} Our big night for the year. \$10 N.B. no byo after 9pm.

### "WIND IN THE WILLOWS"

Sat 4 Oct, 11am and 7pm

Sun 5 Oct, 2pm

Amdram, Guyton Street

Classic family entertainment!

### WANGANUI AMATEUR DANCESPORT CLUB

Sun 5 October, 7.15–9.15pm

St Andrews Hall, Bell Street

Theme: "A Touch of Blue"

\$3.00/\$5.00/Supper provided.

Contact: Annette 021 143 6887

### DONIZETTI TRIO

Wed 8 Oct, 7.30pm

Prince Edward Auditorium,

Collegiate School, Grey St.

Music for Opera lovers, played by Luca Manghi(flute), Ben Hoadley (bassoon) & David Kelly (piano). Adults \$32, Seniors \$28, Students \$5 or subscription.

### ART FIX

Thurs 9 Oct, 2pm

Quay Gallery

A friendly chat to develop a simple toolkit to engage and make art meaningful to you. Socialise at Mud Ducks to follow. Bring pen, paper & coffee \$.

[sarah.mcclintock@sarjeant.org.nz](mailto:sarah.mcclintock@sarjeant.org.nz)

If you have any queries you can contact me on 345 2385

or 027 441 8126.

### ACOUSTIC CLUB

Fri 10 Oct, 7pm

Jolt Café

2nd Friday of every month

Enjoy great coffee and great music.

### NO BROADCAST (CHCH) + THE SHOCKING AND STUNNING (WGTV)

Sat 11 Oct, 9pm

Space Monster

\$10 entry.

### WHANGANUI GREEN DRINKS

Tue 14 Oct, 5.30pm

Delicious Cafe & Wine Bar, 132

Victoria Ave

Now in Whanganui, the global social-networking event for sustainably-minded people, businesses & orgs. Second Tues each month, all welcome, no cost.

[greendrinks.org/--/Whanganui](http://greendrinks.org/--/Whanganui)

### ZONTA FASHION PARADE

Wed 15 Oct, 7pm

Racecourse Function Centre

Tickets \$25 inc supper avail from: Andersons/Great NZ Gifts/Hawkins Pharm/Pumpkin Patch/Silvesters/Noire/Footloose.

### HITS OF THE 50S & 60S

Thu 16 Oct, 11.00am

War Memorial Conference & Convention Centre

### WHANGANUI MUSICIANS CLUB

Fri 17 Oct, 7pm

Savage Club Hall, Drews Ave

Klezmer Rebs

\$10 N.B. no byo after 9pm.

### THE GREAT WHANGANUI QUIZ

Fri 17 Oct, 7pm

Anndion Lodge

Fundraising for DC to go to Hollywood for the LA Music Awards Ceremony in November.

Ft. Performances by Shelley Walls and others.

### MCDONALD'S MUD MUSTER

Sat 18 Oct, 10am

Rangitikei Farmstay Woolshed,

Whanganui

### FESTIVAL OF CULTURES

Sat 18 Oct, 10.30am

Majestic Square (Memorial Hall if wet)

[www.mainstreetwanganui.co.nz](http://www.mainstreetwanganui.co.nz)

### "LAST NIGHT OF THE PROMS" CONCERT

Sat 18 Oct, 7.30pm

Royal Wanganui Opera House

An evening of music and fun in a traditionally British style.

### SITE TOUR

Sun 19 Oct, 2pm

Meet at the Sarjeant Gallery in Queen's Park for a tour, then gather at Sarjeant on the Quay for a further tour and hear all about the move. Pre-bookings at 38 Taupō Quay; eight per tour. Members \$5.00, non-members \$8. Refreshments supplied. Enquiries to [sarah.mcclintock@sarjeant.org.nz](mailto:sarah.mcclintock@sarjeant.org.nz)

### RICHDALE ENSEMBLE

Sun 19 Oct, 4.30pm

Sarjeant Gallery

Presenting a programme of Gershwin, Telemann and Mozart plus Handel's Lascia Ch'io Pianga from Rinaldo featuring local soprano Deborah Wai Kapohe. Pre-bookings at the Gallery. Gallery Members \$7.50, non-members \$10.

### ARTISTS NATTER!

Tue 21 Oct, 10am

Yellow House Café

Join Cr Helen Craig in our monthly get-together of artists to ensure Whanganui remains a dynamic place to live and create. We'll talk about the latest opportunities and happenings in Whanganui for artists.

### HOOP NATION

Sat 25 – Mon 27 Oct

Springvale Stadium

[www.hoopnation.co.nz](http://www.hoopnation.co.nz)

### TRUST PUNKS (AUCK) + MERMAIDENS (WGTV) + GAINS (MWATU)

Sat 25 Oct, 9pm

Space Monster

\$10 entry

### MAINSTREET HALLOWEEN!

Fri 31 Oct, 3–7pm

Mainstreet CBD

Dress up, trick or treat.

Join in the spooky fun!

[www.mainstreetwanganui.co.nz](http://www.mainstreetwanganui.co.nz)

### LAWRENCE ARABIA (SUPPORTS TBA) (CHCH)

Fri 31 Oct, 9pm

Space Monster

\$10 entry.

### THE TOPP TWINS IN

### THE GRAND OLE TOPP'RY

Fri 31 Oct, 8pm

Royal Wanganui Opera House,

Whanganui

### ART IN THE GARDEN

Sat 1 Nov, 9am–4pm

Sun 2 Nov, 9am – 4pm

11 Mannington Road (Off Great

North Road)

Cash & Carry Garden Art.

Free Entry; Plenty of Onsite Parking

Eftpos Available.

### FILM SOCIETY 2014

7pm Mondays at the Davis Theatre, Whanganui Regional Museum

Members only unless stated otherwise. Half-year memberships now available at the venue or online. More info: [whanganuifilmsociety.org.nz](http://whanganuifilmsociety.org.nz)

### CROSSING THE MOUNTAIN

Mon 13 Oct

China, 2010, 98 mins, Subtitles

Abstract, experimental, poetic & fictional; an ethnographic portrait of the people of Wa in the mountains near Burma.

### BREATHLESS (A BOUT DE SOUFFLE)

Mon 20 Oct

1960, PG, 90mn, Subt

A petty crim becomes the subject of a police dragnet and takes shelter with a young American in Godard's Nouvelle Vague classic.

## ART WORKSHOPS

### CHRONICLE GLASS STUDIO

2 Rutland Street, Whanganui

Glassblowing Workshops.

Make Your Own Paperweight.

Fun for Groups and Team-Building.

(06) 347 1921

[www.chronicleglass.co.nz](http://www.chronicleglass.co.nz)

### LOUISE HERDMAN MOSAIC STUDIO

Guyton Street, Wanganui

Open Mondays 1–4pm,

Saturdays 10am–4pm

Classes and Workshops.

027 375 4715.

[www.mosaicpictures.co.nz](http://www.mosaicpictures.co.nz)

### CRAIG WINTON JEWELLERY

Open daily by appointment

11 Iris Place, Bastia Hill

Jewellery workshops available.

021 145 1440

[www.craigwinton.com](http://www.craigwinton.com)