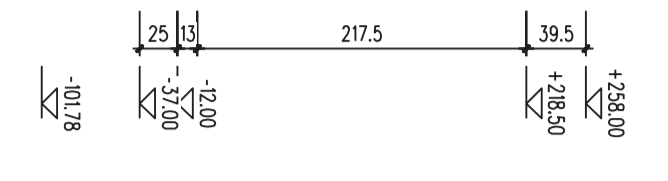
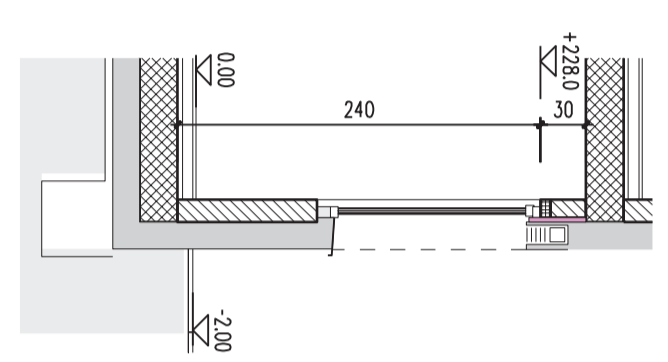


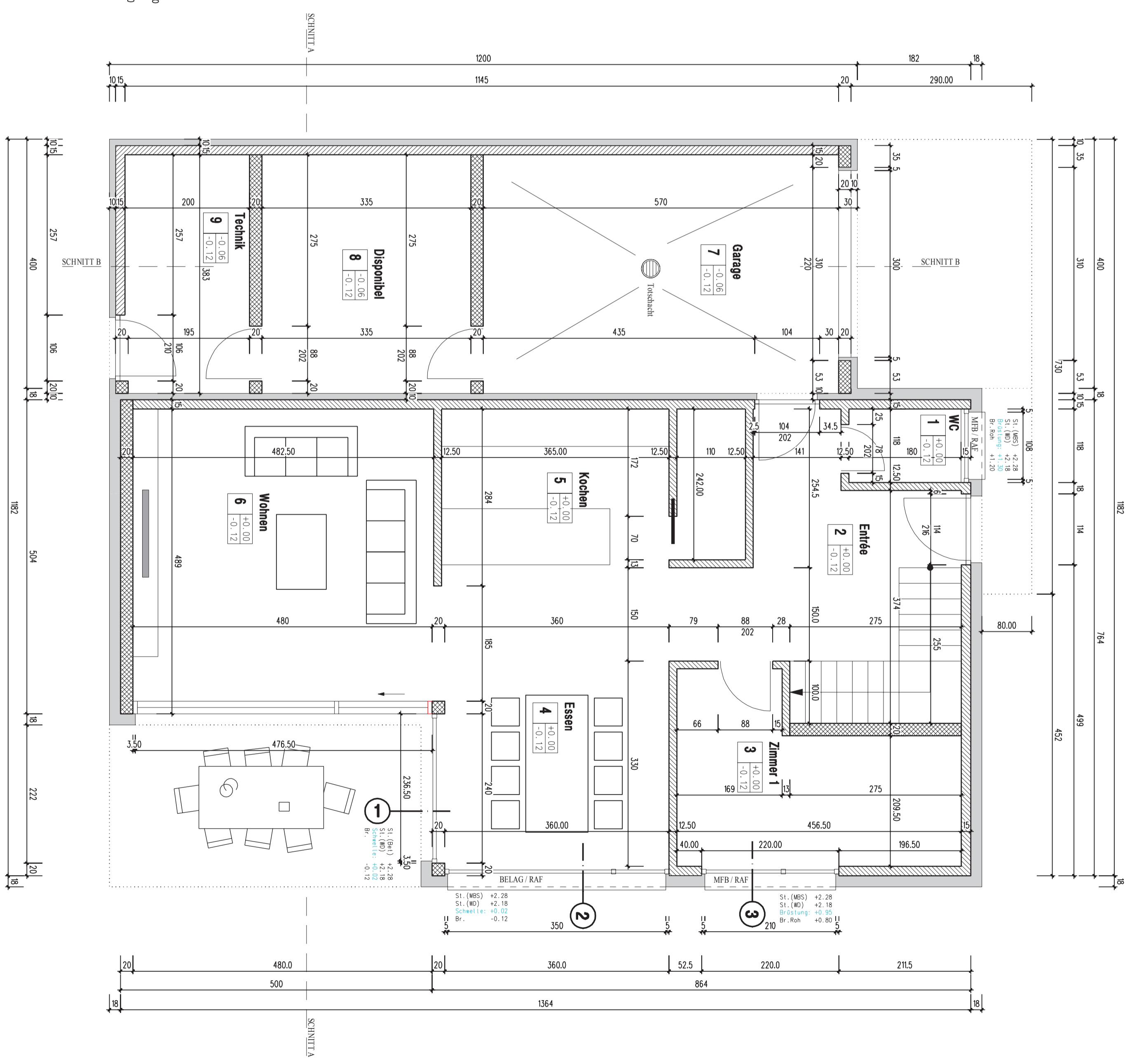
Detail 1



Detail 2



Detail 3



| | | | | | | | | |
|--|---|---|---|--|---|--|--|--|
| WC | Entée | Zimmer 1 | Essen | Kochen | Wohnen | Garage | Dispoibel | Technik |
| 1 | 2 | 3 | 4 | 5 | 6 | 7 | 8 | 9 |
| B: Keramikplatten W: Keramikplatten D: Weissputz | B: Parkett W: Abrieb D: Weissputz | B: Parkett W: Abrieb D: Weissputz | B: Parkett W: Abrieb D: Weissputz | B: Keramikplatten W: Abrieb D: Weissputz | B: Parkett W: Abrieb D: Weissputz | B: Oberzug gest. W: Roh gest. D: Roh gest. | B: Oberzug gest. W: Roh gest. D: Roh gest. | B: Oberzug gest. W: Roh gest. D: Roh gest. |

1
St. (Bst.) +2.28
St. (WD) +2.18
Schwelle: +0.02
Br. -0.12

2
St. (MBS) +2.28
St. (WD) +2.18
Schwelle: +0.02
Br. -0.12

3
St. (MBS) +2.28
St. (WD) +2.18
Brüstung: +0.95
Br., Roh +0.80

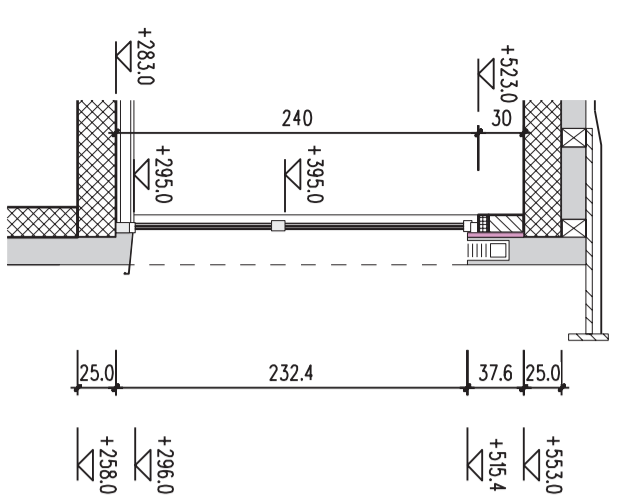
1
St. (MBS) +2.28
St. (WD) +2.18
Brüstung: +1.30
Br., Roh +1.20

1
St. (Bst.) +2.28
St. (WD) +2.18
Schwelle: +0.02
Br. -0.12

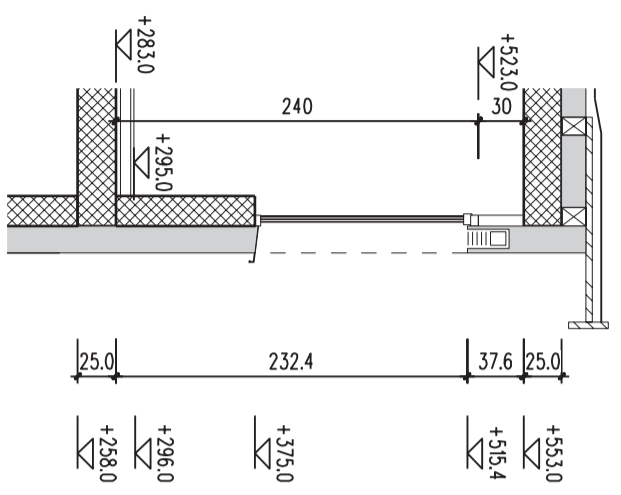
2
St. (MBS) +2.28
St. (WD) +2.18
Schwelle: +0.02
Br. -0.12

3
St. (MBS) +2.28
St. (WD) +2.18
Brüstung: +0.95
Br., Roh +0.80

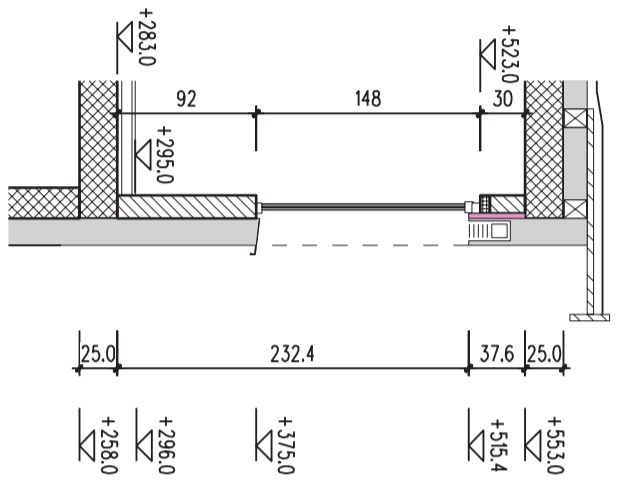
1
St. (MBS) +2.28
St. (WD) +2.18
Brüstung: +1.30
Br., Roh +1.20



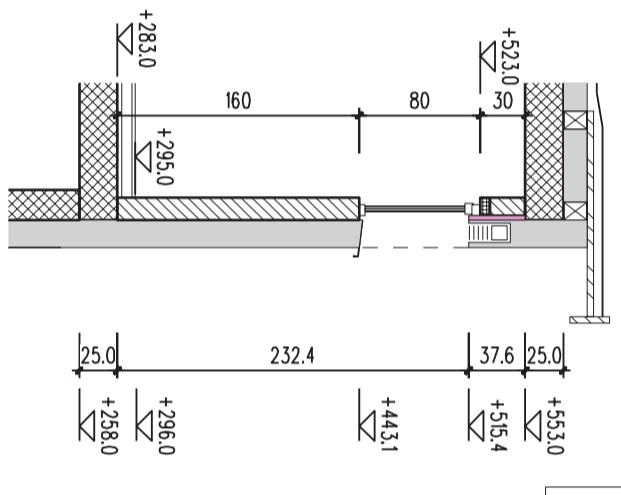
Detail 4



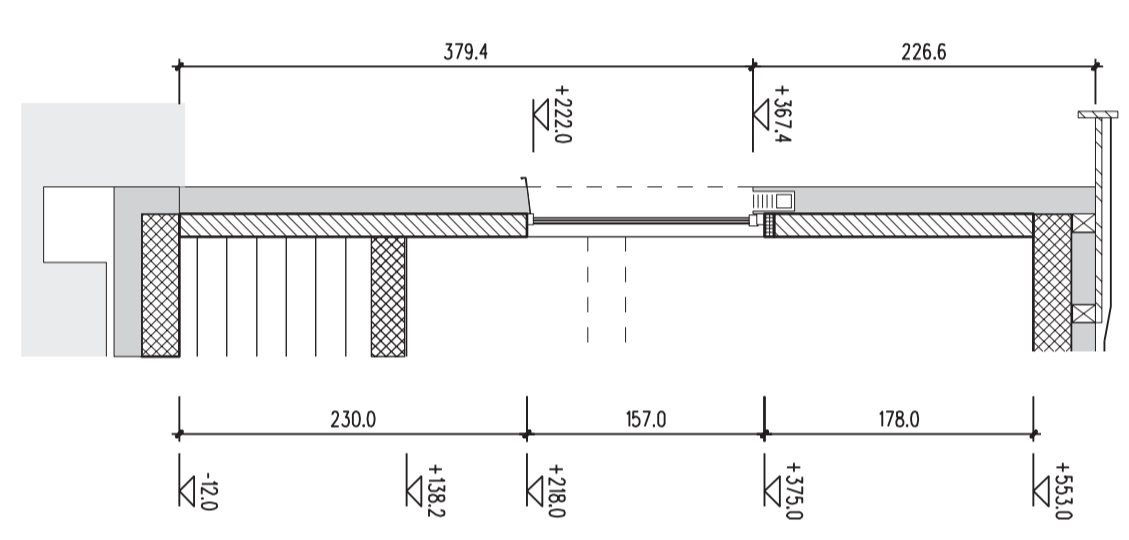
Detail 5



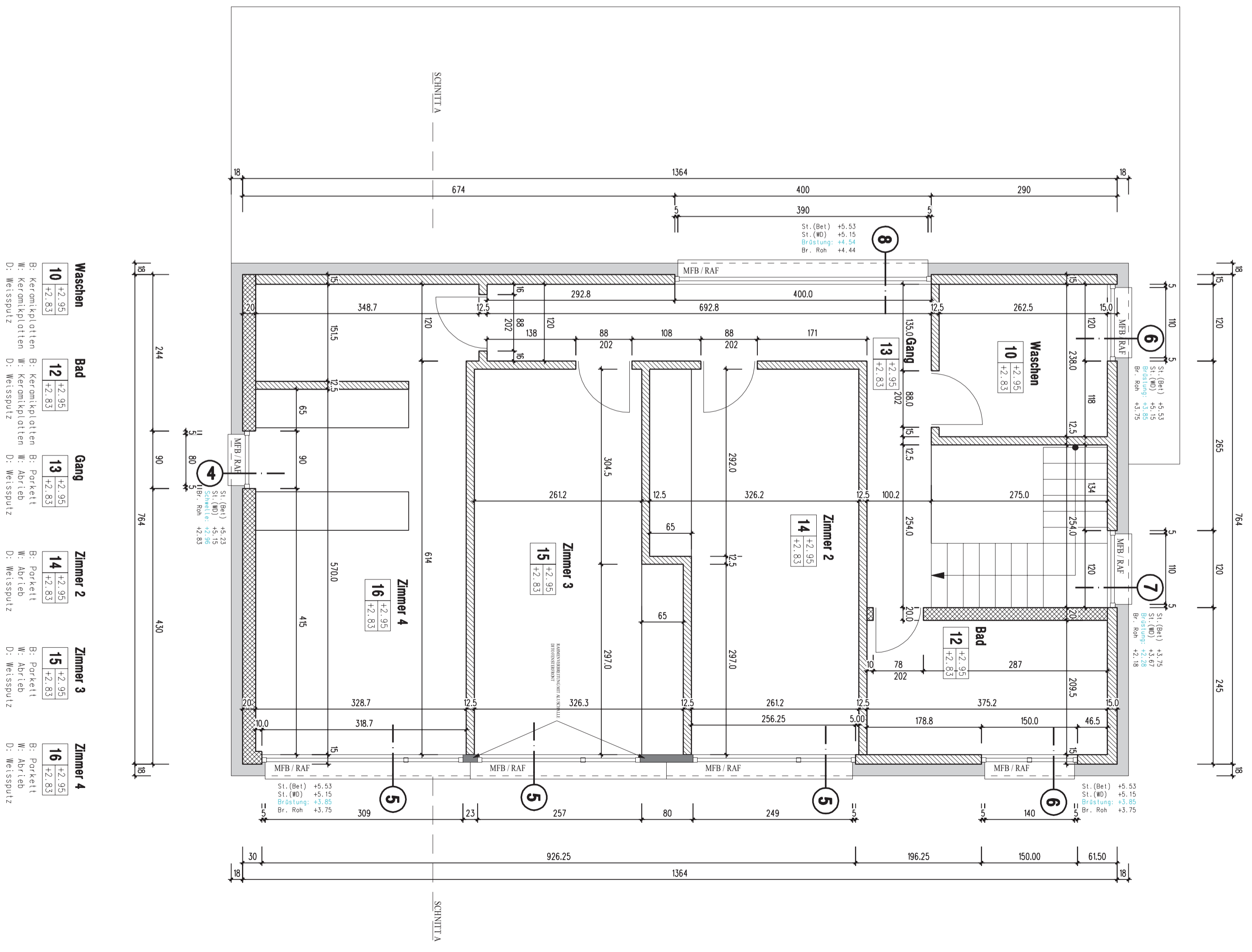
Detail 6

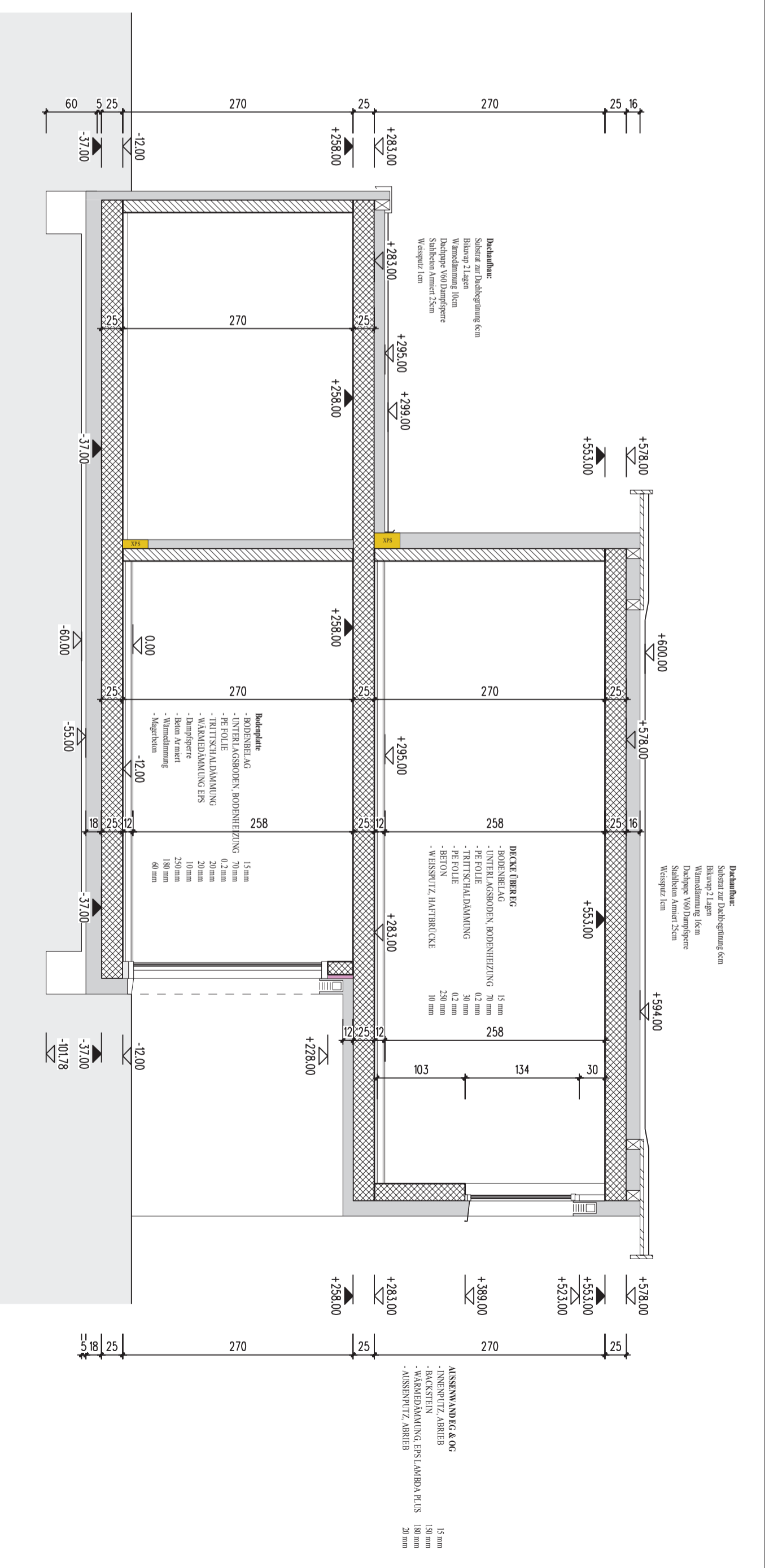


Detail 8

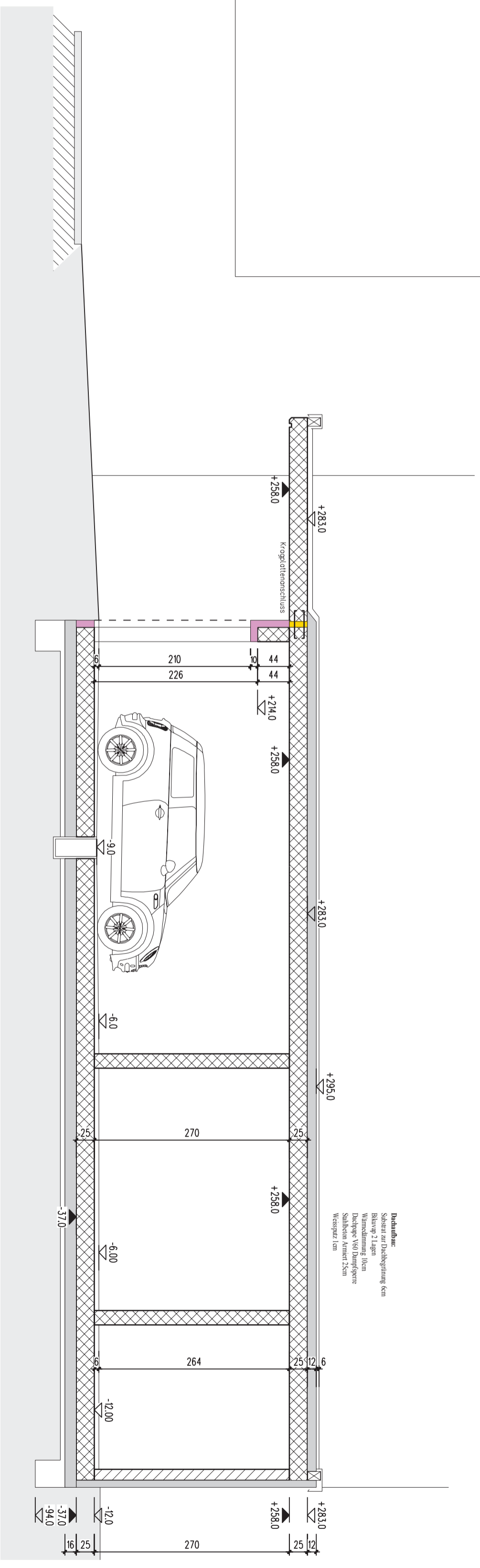


Detail 7





SCHNITT A



SCHNITT B

