



The Goldfields Express

In This Issue: September/October 2012

Page 1:	Message from President
Page 2:	New Members, Thanks to sponsors
Page 3:	From the General Managers desk
Page 4:	Update on Restoration Projects
Page 5:	Recent events at the station
Page 6:	Follow us on facebook
Page 7:	Photo's of track replacement etc.
Page 8:	From the Pages Of Our History

Message from the President

Getting the news out and keeping people informed is getting harder these days even with the technology that we have. Technology that is supposed to give us TIME to do those things that needs to be done. Yea right!!

There is a saying about so much to do with so little time to do it in. How true this is of the Railway.

This last 12 months have been and gone with such speed that it's as if 12 months have been condensed into one. Believe it or not we have achieved much in that time, but as you achieve something there is always more to do.

If you have not been to the station recently then it is about time you took a look at the changes that the band of dedicated volunteers have achieved. Sheds painted, jigger shed restored, new track laid. Take a ride on the train and see and feel the differences to the track.

But as the television adverts say 'but wait there's more' yes there is more, more that we need to do but sadly we don't get one free with each task we achieve.

The Rail Trail has still to bring us the patronage we would like to get from it, but then we are coming up to the start of the holiday season when we need to make certain that we have the ability to cope with any increase.

Positive Publicity is something that we have had a lot of, and we can get more, but we have to get out there and do things that are worthy of being reported. Even if we have to write our own press reports and do our own photographs, at least it gets us in the news in a positive way.

One of the challenges that we have as a Society is ensuring that we can find the funds to maintain this asset for the Community and New Zealand as a working example. This is something that the committee has been considering at length each time we need to find the money to carry out some urgent repair work or replacement of equipment. The Society operates to retain the features and experience of Rail and provide an educational experience to our travellers. It also operates to provide many of us with the privilege of playing with real big boys toys. Come play with us.

Kerry Single

SUMMER TIMETABLE:

The summer train timetable will commence Daily at the beginning of the School Holidays from the 17th December 2012 and continue during each day during School & Public Holidays

Daily: From Waihi
10.00 am 11.45 am 1.45 pm

From Waikino
11.00 am 1.00 pm 2.30 pm

**Special Excursions by Arrangement,
Bike Carriage.
Start or finish your Karangahake Trail Experience at Waihi
All times are subject to change**

New Members to the Society



Kathy Harker, Dawn Hamilton, Elaine & Bruce Goodwin, Dawn Hamilton, Ron & Pam Bjerring, Rex Brown, Ken & Kaye Burne, John & Margaret Coates, Lynette Hardy, Gaylene King, Christine Marshall, Julie Mullan, Emma Walters, Marie Williams.

Thank you for your interest and support in Goldfields Railway.

Thanks to our Sponsors:

We would like to recognise and record our grateful thanks to our sponsors, without whom we would not have been able to have achieved as much as we have on our various projects and events held.



Atlas Copco	Repairs to generator
Phill Boyd	Complete overhaul of the Price Shunter No1
Roger Madsen	Assistance on track work (reverse curve)
Cathy Harker	Salvation Army workers assistance on track work
Paul Schuler	Access through his property for track maintenance
Terry Inger	Supplying & fitting lino in vestibules of carriage
NZ Lotteries and Grants Board	Track Replacement
James Say Trust	Website development, Prices Shunter
Carter Contractors	Assistance with the reverse curve replacement project
Corrections	Workers for labour assistance for the track maintenance
Hauraki District Council	Funding for bridge replacement
Valder Ohinemuri Trust	Cash register
Waihi New World	Shopping bags for our shop
Graeme Martin	All the extra's that he has been paying for and not asking for reimbursement

And of course our thanks must also go to the many volunteers and supporters that are involved with Goldfield Railways, including operation of the trains, restoration work etc.

Thank you everyone

Update on Houses:

The houses are coming along nicely with the painting now being carried out. The fencing is also making them look a lot more distinguishable as each section is fenced off. There are still two houses to have the fencing finished.



From the General Manager's Desk:



Track Inspection: Paul Heighton from Glenbrook Vintage Railway came and assisted us with a track inspection, which required walking the full length of the track.

Paul & Dennis left Waihi at 9am with a track measuring gauge. Paul checked the distance between the tracks every 5m to 10 meters. They finally arrived at Waikino dry, worn out and very tired at 3pm.

Paul wrote his report and commends on the work that has been done. One of the worst areas was the reverse curves which have now been re-tracked. The drainage attended to and re-ballasted. A bit of tidying up still to be done, other areas have had track sleepers replaced to 1 in 4 further sleepers will be required to be relayed in the coming years.

Our inspection pit collapsed partly due to rotting timber and wet weather, the boxing is near complete and the concrete work will start shortly.



Bridges:

We are at present looking at a bridge from Katikati to replace the Waitete Bridge.



Trees Overhanging Track

These were removed earlier this year, with the help of Bob Morton, David Rowe, Shadze Hauraki, Russell Enyon, Dennis Blake, Graeme, Martin and Kerry Single. With morning tea supplied by Sara Single and Sherryl Sutherland.

We also had the Transit NZ with our guys doing the stop go signs and all went by without a hitch

Vegetation is mostly under control with all of the overhanging trees at Waikino and Ranchod's property has been dealt with. A start has been made with the help of Corrections personal to clear the old quarry site at Waikino.



NZTA : Ordinary Rail Safety Assessment:

Our latest rail assessment is a great improvement from when Dennis first took over the General management role.

Dennis, during the winter months, in between rainy days has now started on the top of the reverse curves, to date he has lifted over 500 meters of track and has now been relayed.



DOC paddocks:

The weed control is improving and we have some cattle currently munching away at the grass.



Drivers and Guards:

Any member who wishes to be trained please contact the office and we will endeavour to give you a ticket before Christmas so that you can assist with our busy running period which is looming.

Update on Restoration Projects:

(Restoration Team on site at the station include:

Don Martin, Allan Carter, Graeme Martin, Barry Scott, Ron Wilton, Dave Rowe, Ashton Baird, Glen

■ **Glenbrook Carriage**

Now going to get the seat frames sanded and repainted, and the flooring needs new lino. We are applying for grants to get this done.

■ **UG79 Wagon**

The UG wagon from Waitara is now been turned into a bike carriage, in the hope that the bike trail from Waikino to Waihi will be via Goldfields Railway, and used on a regular basis



First arrived it was a passenger Carriage



It is now our bike carriage

■ **1944 Prices' Shunter(Phill Boyd, Anton Douglas, Ashton Baird)**

The Prices Shunter is now back at the Waihi Station and is being used around the station for all the odd jobs.

The people that have been passed to drive this train are:

Phill Boyd, Dennis Blake, David Rowe, Graeme Martin, Barry Scott, Ashton Baird, Arthur Lynch,



From this



To this

■ **Jiggers**



Ashton has recently finished doing up a jigger; he put a rotary motor in it. This is looking a picture

Thanks Ashton

Recent Events at the Station:

Teddy Bear Run : 13 October



This was a great day even though the weather was against us. There was a good turnout for this event.

Thanks to all the volunteers and others who contributed to make this event possible.

Coromandel Promotion DVD Hidden Treasures



The Start of the Hauraki Rail Trail Opening



The Before and After
Sherryl and Sara
took time out for a
ride on the trail
without rail



“Follow us on Facebook”

We now have a Facebook page that is open to all, to post their comments, photos and to view.

Our page name is: Goldfields Railway Experience (Waihi Railway)

Please take a look and post a comment. Thank you.



Congratulations to Dennis Blake on celebrating his 70th Birthday during the last month.

Photos of Reverse Curve Track Replacement



Shadze & Russell making track sets



Dennis Loading the track sets



The removal of the old rails



Sleepers still to be lifted



Old Tauranga Road bridge



Dennis' truck removing sleepers



Track sets at the site



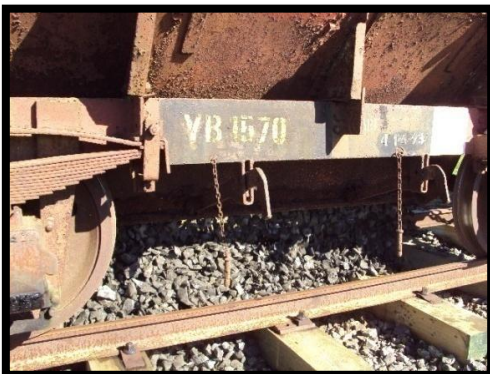
Track sets being lifted into place



Dennis putting the final rail into place



Ballast at station



Ballast being placed on the track



Dennis & Dave can see the end of this job

From the pages of history



This was recently handed into Waihi Station from Rex Pratt.

He said that this train was derailed because children put stones on the track.

If you know any of the gentlemen in this photo or have any further information about the photo.
please contact the railway 07 8639020

Editor: Fiona Schedewy